

WE BOOST
YOUR
BUSINESS



CERTIFICATES

RISE - Research Institutes of Sweden AB Certification (former SITAC)

Air Tightness Certificate for Ventilation Ductwork System - air tightness class D according to EN 12237:2003 - round spiral ducts and ductwork fittings with seals.



The Building Information Foundation RTS sr

M1 Cleanliness class for air handling components:

- Ventilation spiral ducts
- Pressed bends, reducers, T-pieces and take-offs
- Segmented bends, reducers, T-pieces, take-offs, male couplings, offsets
- Air dampers: regulating, shut-off, iris, multi blade



TÜV Rheinland Polska

Certificate of production quality:

- Round ventilation ducts and fittings
- Mounting accessories



Instytut Techniki Budowlanej ITB (The Building Research Institute)

Technical approvals and certificates of constancy of performance

- STRUT assembly system
- Suspended mounting elements
- Flexible ducts - fire classification
- Fire dampers



Passive House Institute

ZX



EcoDesign Directive Compliance

Alnor Systemy Wentylacji meets the requirements of ErP2018 Directive introduced by the EU Commission Regulation no. 1253/2014 regarding ecodesign requirements for ventilation units. The regulation has been in force since January 1, 2016, and from January 1, 2018 its requirements have been tightened.



Product Overview | Alnor Ventilation Systems

CERTIFICATES

Prüfstelle HLK Universität Stuttgart

The "push-pull" decentralized heat recovery units with a ceramic heat exchanger have been tested according to the standard EN 13141-8: 2011.



University of Stuttgart
Germany

TÜV SÜD Industrie Service

Heat recovery units series HRU-MinistAIR-W-450 and HRU-MinistAIR-W-250 have been tested in accordance with the requirements of DIN-EN 308: 1997-06.



Industrie Service

TÜV Rheinland Polska

Certificate of the production quality:

- Regulating, shut-off, non-return and iris dampers
- Ventilation silencers



Fraunhofer-Institut für Bauphysik

The SLC rectangular silencers have been tested in accordance with the requirements of DIN EN ISO 7235: 2010



Fraunhofer
IBP

Institute of Power Engineering / Research Institute Thermal Technology Branch of "ITC" in Łódź

Aeroacoustic tests of SIL-50, SIL-100, SIBOL-100 silencers carried out in accordance with the standards:

- EN ISO 3471:2010
- EN ISO 7235:2009

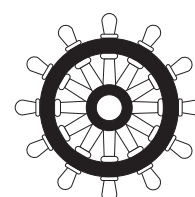


Alnor Systemy Wentylacji as a manufacturer after confirming the conformity of the product or its manufacturing process with the essential requirements, is required to issue a declaration of conformity (if the conformity assessment procedure is used) and affix the CE or B marking to a product.



European Community Certificate of Conformity Issued in accordance with the Marine Equipment Directive

- MED certificate 164.112./1121/WCL MED0492TE
- MED certificate 164.112./1121/WCL MED0494TE
- MED certificate 164.112./1121/WCL MED0495TE
- MED certificate 114.478 - Non-combustible insulation material



MATERIAL

TYPES OF METAL

Galvanized steel

Sheet thickness available : 0.4 / 0.5 / 0.6 / 0.7 / 0.9 / 1.2 mm.

Zinc coating: Z275 or Z140

Other thicknesses available on request: 0.4-2.5mm. Offering depends on request quantity.

It is possible to perforate sheet metal with a thickness: 0.5 / 0.6 and 0.7 mm.

Stainless steel

- **1.4404 / V4A / 316L** with increased corrosion resistance. Used in high humidity areas, e.g. in a swimming pools.
- Thicknesses available in stock: 0.6 and 0.8 mm.
- **1.4301 / V2A / 304**: with high corrosion resistance for applications in the food industry. Thicknesses available in stock: 0.5 and 0.7 mm.

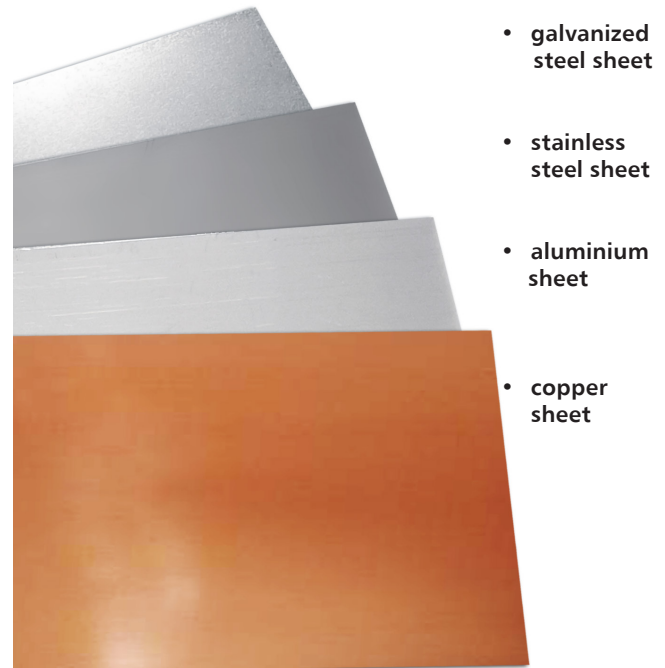
Other stainless steel grades, e.g. 1.4571 (with the addition of titanium), are available on request.

Aluminum sheet 1050A, temper H24 - much lighter than galvanized or stainless steel sheet metal, high corrosion resistance, including salt water. Thicknesses available in stock: 0.6 and 0.8

Aluzinc sheet available on request, with additional resistance to high temperatures up to 300°C.

Copper sheet M1E z4

Cleaner air, free of bacteria is a result of the natural properties of material, like formation of patina which gives germicidal effect. This advantage is of essential importance for healthcare facilities or rooms used by allergy sufferers.



- galvanized steel sheet
- stainless steel sheet
- aluminium sheet
- copper sheet

TYPES OF PLASTICS:

To better distinguish the materials that in their natural form are generally semi-transparent, we use standardized colours:

PE – Polyethylene.

PP – Polypropylene.

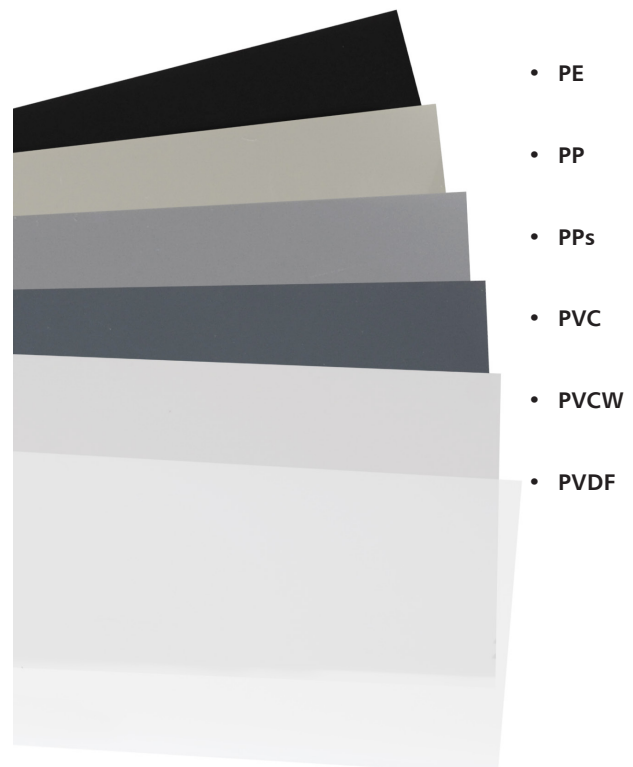
PPs – shares the basic characteristics of polypropylene (PP), but is also flame resistant and bears high resistance to temperature - the range of operating temperature scales from 0 to 90°C.

PP-EL-s – apart from having the same characteristics as PPs, it is also an electrically conductive material.

PVC – polyvinyl chloride.

White PVC – PVC used for outdoors applications.

PVDF – Polyvinylidene fluoride.



- PE
- PP
- PPs
- PVC
- PVCW
- PVDF

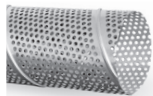
Product Overview | Alnor Ventilation Systems

PRODUCTS

VENTILATION DUCTS (PIPES) WITH CIRCULAR CROSS-SECTION SPIRAL® SYSTEM



SPR-C



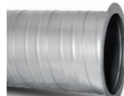
SPRP



SRGL



SRGW



SPR-FLS

Spiral ducts, perforated, with linear seam-weld, butt weld and with FLS flanges or rolled-up edge for TRANS-Quick system.



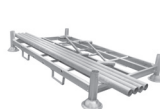
SPR-C-MR



SPR-C-WB



WOOD-BOX



MOBIL-RACK

Wooden crates and metal racks, designed for storage and transport of spiral ducts.

VENTILATION BENDS WITH CIRCULAR CROSS-SECTION SPIRAL® SYSTEM



BPL-...-90



BPL-...-60



BPL-...-45



BPL-...-30



BPL-...-15

Pressed bends with seals. Bends with seals ensure achieving "D" class leakage (airtightness) according to EN 12237:2005.



BP-...-90



BP-...-60



BP-...-45



BP-...-30



BP-...-15

Pressed bends without seals. Linear seam-welded ensures higher air-tightness of ductwork. Bends with safe-edge.



BPL-K-...-90



BPL-K-...-45



BP-K-...-90



BP-K-...-45

Bends made of stainless steel.
Stainless steel grades: 1.4301/304,



BPD-...-90



BPD-...-45



BPD-...-90



BPD-...-45

Long, pressed bends with radius 1.5D. Bends with seals ensure achieving "D" class airtightness according to EN 12237:2005.



BPKL-...-90



BPKL-...-45

Short, pressed bends with radius 0.6xD. Fittings with seals.



BPFF-...-90



BPKFL-...-90



BPKFL-...-45

Female and female-male, pressed bends

Product Overview

PRODUCTS



BSL-...-90



BSL-...-60



BSL-...-45



BSL-...-30



BSL-...-15

Segmented bends with seals. Fabricated 4-5 segments. The inside surface of the hemmed seams is sealed.



BS-...-90



BS-...-60



BS-...-45



BS-...-30



BS-...-15

Segmented bends without seals. Bends can be made of stainless steel, aluminium or copper.



BSD-...-90



BSD-...-60



BSD-...-45



BSD-...-30

Long, segmented bends with radius 1.5D with and without seals. Smooth radius reduces pressure loss.



BSKL-...-90



BSKL-...-60



BSKL-...-45



BSKL-...-30



BSKL-...-15

Short, segmented bends with seals and radius 0.6xD.



BSK-...-90



BSK-...-60



BSK-...-45



BSK-...-30



BSK-...-15

Short, segmented bends with radius 0.6xD.



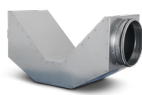
ODSOL



ODSO



ODSQL



ODSQL



ODSOQL

Offsets help routing ductwork around obstacles.

VENTILATION REDUCERS WITH CIRCULAR CROSS-SECTION SPIRAL® SYSTEM



RPCL



RPC



RPCFL



RPCF

Pressed reducers with and without seals. Male and female-male ends.



RSCLL



RSL



RSCFL



RSLFL

Segmented reducers - diffusers and confusers.

Type: concentric and eccentric, with and without seals



RSCLE



RSLC



RSCLEF



RSLCF

Ends: male-male
female-female

Product Overview

PRODUCTS



RSF



RSFF



RSFL



RSFFL



RSFC



RSFCF



RSFCL



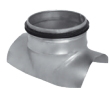
RSFCFL

Flat, segmented reducers - diffusers and confusers.

Type: concentric and eccentric, with and without seals

Ends: male-male
female-male

T-PIECES AND X-PIECES: SADDLE, ANGULAR, Y-PIECES SPIRAL® SYSTEM



SPL



SP



SPSL



SPS



SPSM

Pressed and segmented collar saddles.



SPSML



SSCL



SSC



SSL



SS

Segmented collar saddles for ventilation ducts.



SSCCBL



SSCCB



SSCFBL



SSCFB

Segmented saddles - curved boots for spiral ducts and flat shoes for rectangular ducts.



SSCVL-45



SSCV-45

Collar saddles are available at angle from 30° to 80° for non-turbulent, smooth air flow.



TPCL¹



TPCL³



TPCL⁴



TPC¹



TPC³

Ventilation, pressed T-pieces and X-pieces with and without seals. Different types are available depending on the diameter.



TPC⁴



XPCL



XPC



TPCL-CP



TPC-CP



TPCL-CP-I



TPC-CP-I

Insulated reducing T-pieces with blind end cap used as an access door or a plenum box.

Product Overview

PRODUCTS

TSCL



TSC



XSCL



XSC

Segmented T-piece and X-pieces. Concentric and eccentric versions. Versions with EPDM seals are available.



TSL



TS



XSL



XS



COLL

Branch-off, T-pieces and X-pieces.



TSVL-45



TSV-45



XSVL-45



XSV-45

T-pieces and X-pieces with an angled outlet. Version with seals ensures class D airtightness according to EN 12237:2005.



YSVL-45



YSV-45

Y-piece is used for the even air distribution in ventilation ductwork.

VENTILATION COUPLINGS

NSL



NS



SNSL



MSF



SMSFL

Male, female and male-female couplings for spiral ducts and duct fittings

TAKE-OFFS: SADDLE, ANGULAR, FLEXIBLE DUCT CONNECTORS

ILPRL



ILPR



ILPL



ILP

Round to rectangular pressed take-offs (branches). Available with and without seals.



ILSL



ILS



ILSF

Flat, straight, pressed take-offs (branches). EPDM rubber seal meets requirements for air tightness class D according to EN 12237.



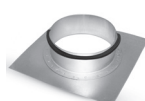
ILSVL-45



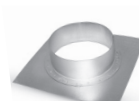
ILSV-45



TR6



KILL

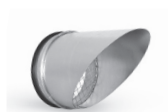


KIL

Square spigot plate joins circular duct with rectangular duct. Available angle branches.

Product Overview

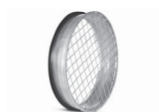
PRODUCTS



ASVL-45



ASV-45



ILSNL



ILSN

Take-offs with mesh.



ILA-NS



ILA-FLS



ILA-TK



ILA-NSL



ILA-NSL-HI-T

Flexible duct connector. Made of flexible fabric resistance to high temperatures, weather conditions and chemical substances.

VENTILATION END CAPS



CPSL



CPS



CPNF



CPF



CP

Pressed end caps. Female and long versions are available. End caps fit ducts and fittings.



CSL



CS



CSF

Segmented end cap. Female version available. End caps fit ducts and fittings.



CPFH



CSHL



CSH

End caps with a handle, fit spiral ducts.

Product Overview

PRODUCTS

MOUNTING ACCESSORIES



CLRL ≤400



CLR ≤400



CLRL >400



CLR >400

Suspension rings for round ducts.
One-piece, two-piece, with or without
vibration-damping EPDM rubber-inserts.



CLRL-C



CLRU



PB

Perforated suspension tape designed for
installation of round ventilation ducts.



EQRS



EQZS



EQZS-S



EQLS



EQLS-L

Duct suspension brackets for quick
installation of circular and rectangular
ducts.

Duct suspension brackets are available in
various types of steel.



EQLS-S



EQVS



EQVS-S



AMORT

Vibration-dampers used with ventilation duct
suspension system. Made of EPDM, provided
with a washer made of galvanized steel.



LDB-30-20



LDB-30-30



LDB-30-45



LDB-41-21



LDB-41-41

Fixing rails and channels with high
deflection factor.



LDBST-41-21



LDBST-41-41



LDBDT-41-21-21



LDBDT-41-41-41



GPK

Vibration-dampers for fixing rails. Attenuate
noise generated between rail and duct.



Z-LDB-30-20



Z-LDB-30-30



Z-LDB-30-45



Z-LDB-41-21



Z-LDB-41-41

LDB & LDBST channel end caps.



LDBSG



LDBSO

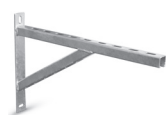


LBBST

Strut channels available in various types of
zinc coatings or in raw steel.



W-LDB



WK-LDB



ST-P

Cantilever arms, base plates for strut
channel and fixing rails.

Product Overview

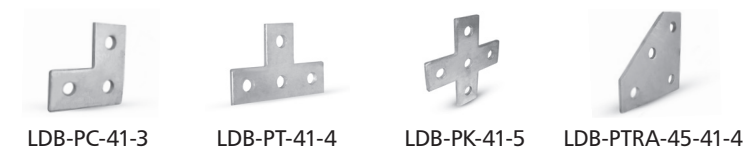
PRODUCTS



90° angle fittings (brackets) for LDB STRUT channel.



Flat plate fittings (brackets).



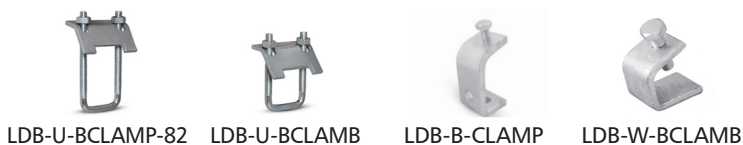
Flat plate cross and corner fittings (brackets) for joining LDB STRUT channels.



Angle fittings (brackets) for STRUT channel.



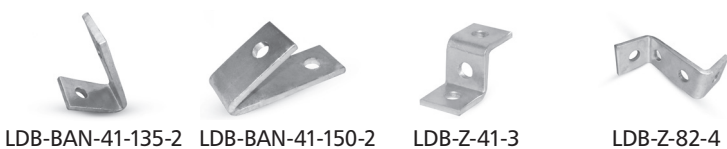
Clamps for suspending LDB fixing rails.



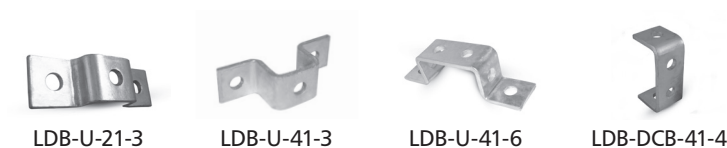
Clamps for suspension of STRUT channels.



Angular fittings (brackets) for cross joining of STRUT channels.

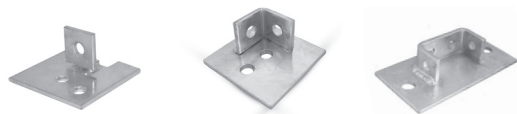


Fittings (brackets) cross joining of STRUT channels.



Product Overview

PRODUCTS



LDB-STP-AN-41-3 LDB-PFIX-41-4-TOP LDB-STP-82-6-2

Base plates for STRUT channel.



LDB-CHTB-41-6-2 LDB-EXT-U-21-4 LDB-EXT-U-41-4

Highly loadable external couplers for LDB STRUT channel.



LDB-WP-41 LDB-BAN-R2-41

Adjustable brace for STRUT channel.



SNP

SNL

SNKL

SNP-0806-SR-NK

Slide nuts for Strut channel, nuts with large washers



SRS

SRS-D

SR2G

NKS

PDS / PDS-P

Various types of screws, nuts and washers.



PG

NZO

B-CLB

Threaded rod. Size: M6-M12
Coupling nuts for threaded rod.
Beam clamps for threaded rod.



KROZ

TK-MO

TK

TK-DOB

Wall plugs and drop-in anchors for threaded rod and dual thread dowel screw bolts. It is recommended to use a TK-DOB driver for installing drop-in anchors.



PWQ

PWQ-R

KLQ

Slide channel and G clamps for joining rectangular ducts.



WGO-KL

WGO-KZ

WGO-IB

WGO-KL-NK

Various types of self-drilling screws. It's recommended to use dedicated bit tip holder for driver.

Product Overview

PRODUCTS



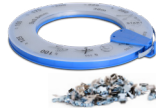
TKS



TKS-A



TKS-N



TKSE/TKSL



TKSE-A/TKSL

Tightening bands (duct straps) for flexible ducts. Available also in rolls with a set of band clips.



MSFK



MSFK-C

Sealing and fastening clamps for joining ductwork components.

ROOF INSTALLATION ACCESSORIES



FAA



FAAL



FAAT

Duct supports designed for installation of round ventilation ducts on flat surfaces, e.g. on the roof.



PD-EPDM-R

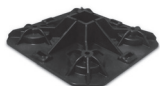


PD-EPDM-S



PD-EPDM-S0

Roof flashings to seal around the roof penetration openings.



ST-ROF-330



ST-ROF-AW-330



ST-ROF-AWL

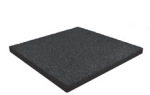


ST-ROF-AWL-STR

Support roof feet.



ST-ROF-AF



ST-ROF-MAT

Absorbing adjustable feet and anti-vibration mats for roof feet.



ST-ROF-SET-H



ST-ROF-SET-4



ST-ROF-SET-6



ST-ROF-SET-8

Sets of roof supports and frames for installation of ventilation ductwork and any type of equipment mounted at building roofs.

Product Overview

PRODUCTS

DUCTWORK PREFABRICATED COMPONENTS



NQ-C-20K



NQ-C-20



NQ-C-20-2,5



NQ-C-20L



NQ-C-30



NQ-C-40



NQ-C-20-SH



NQ-C-20L-SH



NQ-C-30-SH



NQ-C-30L-SH

Various types of flange corners, including short and long corners. NQ-SH corners are manufactured using SWAH flanging machine with 12 rollers.



PQ



PQ-SIL



NI-AKB-70

Standard flange profile and with injected sealant for rectangular duct production. Widths: 20, 30 and 40mm. Manual riveter.



AMT



AMT-K



AMT-HI-T



AMT-PU



AMT-NEP

Flexible duct connector (a joint consisting of a layer of fabric and two strips of sheet metal on both sides), available in galvanized steel and stainless steel, resistance to high temperatures, chemical substances and aging.



PRQ



WKK-PVC



WKK-OCY



RURA i dybel WKD

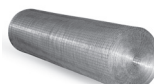


WKT

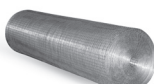
Turning vane guides and reinforcing rod and dowel for rectangular ventilation ducts and fittings of large sizes.



FLS



SIA



SIA-K

Flat circular flanges for circular ducts, intake and exhaust roof vents. Wire mesh netting protects from impurities.



PRET



KIT-DSKS



KIT-DSKKS



KIT-DS

Ventilation damper mechanisms.

Available in insulated and stainless steel versions.



KIT-DS-H



KIT-DS-M



KIT-DS-JDS



KIT-DS-PVC

Damper mechanism control lever or actuator coupling for ventilation damper mechanisms.

Plastic damper mechanisms.

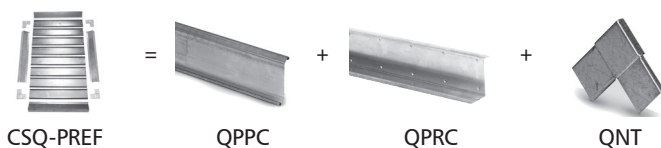


KIT-DS-CV

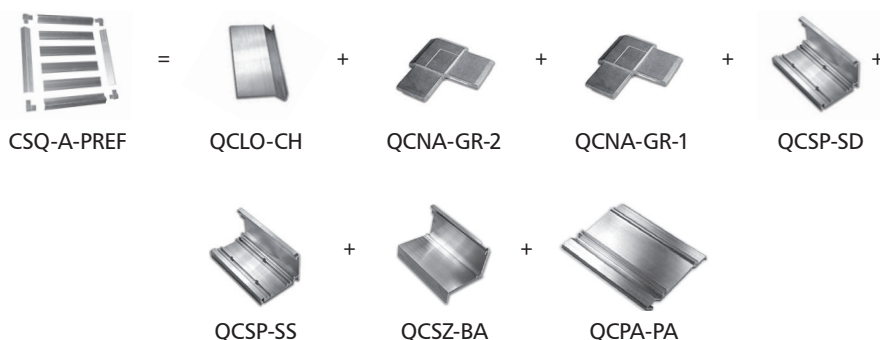
Damper mechanism available in galvanized steel, stainless steel and aluminum.

Product Overview

PRODUCTS

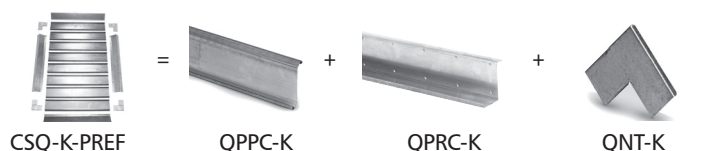


Steel components for fabrication of air intake/exhaust vents CSQ-PREF / WSQ-PREF (damper blade, side parts and side part corner pieces).

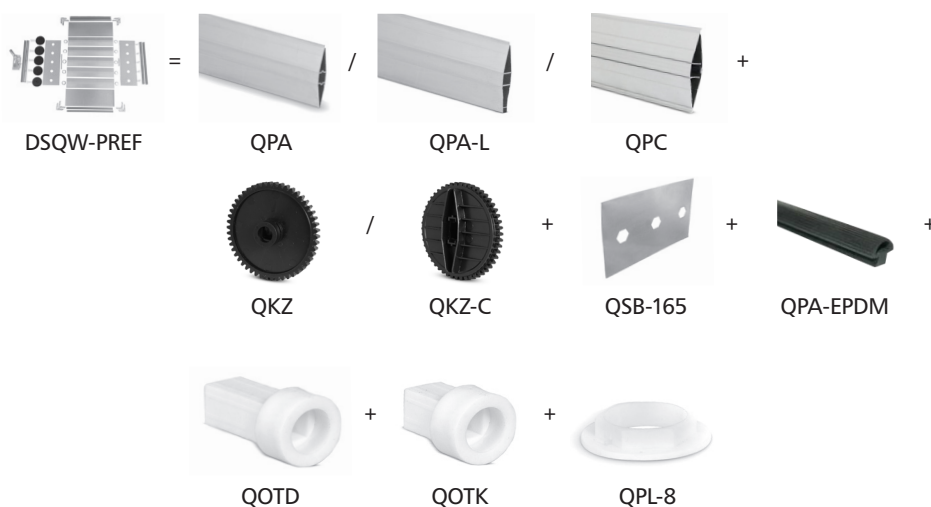


Aluminium prefabricated components for air intake and exhaust vents CSQ-A-PREF / WSQ-A-PREF.

Air intake/exhaust units components include: drip cap, corner pieces, right-hand/ left-hand side part, top-bottom capping frame, blades.



Stainless steel prefabricated components for air intake and exhaust units CSQ-K-PREF / WSQ-K-PREF.



Multiblade rectangular damper prefabricated components DSQW-PREF.



Rectangular ventilation damper mechanism.

Product Overview

PRODUCTS



Aluminium rectangular damper prefabricated components DSQW-A-PREF.

Aluminium damper components include: damper blade, end caps, top/bottom frame, right-hand/left-hand side part, gaskets, actuator mount, drawn bar.

Product Overview

PRODUCTS

VENTILATION DUCT ENDS TRIM



KW-RM



KW-RM-9010



KW-RML-9010



KWI



KWI-RMI

Supply and extract air valves.
Diameter: 80-250 mm.

Air valves can be powder-coated in any RAL colours, standard colour: RAL 9016.

Air valves are available in:
- galvanized steel with powder-coated finish
- stainless steel



KW-K-RM



KWO-RML



KWO-RM-SE



KWV-RM



KN-RM



KN-RM-9010



KN-RML-9010



KNI



KNI-RMI



KNV-RM



KN-K-RM



KNT-RML



KNT-RM-SE



RM



RML



RM-SE



RMD



RMDL

Mounting frames for air valves.
Available in long and stainless steel version.



ROZ-H



ROZ-H (fi>200)



ROZ-P



ROZ-P (fi>200)

Finishing rosette for ventilation ducting.



KCN



KPP



ELZ



ELZ-I

Chrome/Nickel air valves and plastic telescopic air valves.



UELA



UELA-AL



UVLA



USLA

Wall mounted intake and exhaust grilles.
Available also with drip nose.



USAV



USAV-BM

Product Overview

PRODUCTS



USUA



USMS-P



USMS

Cowled outlets with non-return flap. Made of various materials: stainless steel, plastics.



USUF



USAB



ULMA

External grilles for finishing ductwork and aluminum floor grilles.



SGR-0



SGR-1



SGR-DA

Supply/extract grilles. Available also with a damper for a direct assembly on the round duct.



SHR



SHR-DAW



SHR-RM

Supply/extract grilles. Available also with a damper for a direct assembly on the rectangular duct. It's recommended to use a mounting frame for installation.

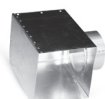


NCD-S



NCD-S-DA

Square cone diffusers and dedicated air dampers.



PRK-B



PRK-B-I



PRK-G-D



PRK-G-D-I

Available insulated plenum boxes with side or top inlets. What's more, plenum boxes can be supplied with a damper.



NKSD-C 298-8



NKSD-C 396-16



NKSD-C 498-24



NKSD-C 598-24



NKSD-C 598-48

Ceiling swirl diffusers - with various number of plastic blades.

Diffusers are mounted to the air duct system with plenum box in a suspended ceiling.



NKSD-CB



NK-SWB



RVA



RVA-45

Used for low and medium pressure, supply ventilation systems.

The diffusers are light and easy to install what eliminates a necessity of reinforcing the construction of suspended ceiling.



NK-SWA-300



NK-SWA-400



NK-SWA-500



NK-SWA-600



NK-SWA-625

Product Overview

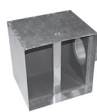
PRODUCTS



PRV



PRW-B-D



PRW-B-I



PRW-B-D-I

Plenum boxes for supply and extract air diffusers RVA, NKSD-C, NKSD-CB, NK-SWB.



PRR-B



PRR-B-I



PRR-B-D



PRR-B-D-I

Plenum boxes for NK-SWA diffusers. Top/side inlet connection. With insulation layer and/or damper.



NKSD-R-400



NKSD-R-500



NKSD-R-600

Swirl diffusers with round face panel. Features adjustable plastic vanes/ blades to set direction of uniform air pattern.



PRR-SD-R-B



PRR-SD-R-B-I



PRR-SD-R-B-D



PRR-SD-R-B-D-I

Plenum boxes PRR-SD-R for NKSD-R diffusers in low and medium pressure ventilation systems.



NCD



RM-NCD

Circular cone diffusers. For assembly, it's recommended to use plenum box or mounting frame in order to connect the diffuser to a duct or a fitting.



PRR-CD-R-B



PRR-CD-R-B-I



PRR-CD-R-B-D



PRR-CD-R-B-D-I



PRO

As a standard plenum boxes have top/side inlet connection. Available also versions with insulation and/or damper.



KHA



ITG

Ball jet diffusers with adjustment angle of the outlet .



LDS-1



LDS-2



LDS-3



LDS-4



LDS-2-0

Linear slot diffusers, available version for self-assembly of diffusers of various lengths.



LDS-3-0



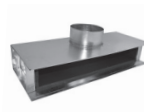
LDS-2-B



LDS-3-B



LDS-2-C / LDS-3-C



PR-LDS

Dedicated plenum boxes for diffusers ensure even airflow.

Side connection of the plenum box to duct. Available also versions with insulation and pre-installed damper.

Product Overview

PRODUCTS



ACL



ACP



DKF



DKF-L

Circular ceiling diffusers for supply and extract air. Diffusers can be installed directly to ventilation duct connection.



GCR



GCR-L



GCR-P



GCR-LP

Swirl diffusers for supplying cold air. The diffusers are intended for room up to 4m high, e.g. hotels and office buildings.



AKL



AKP

Square ceiling diffusers for supply and extract air. Diffusers can be installed directly to ventilation duct connection.



CSQ



CSQ-A



CSQ-K



WSOQ



DSQOW

Wall-mounted air intake, exhaust and non-return exhaust air vents. Made of galvanized steel, aluminum and stainless steel.



QILN

Wire mesh with a frame made of PQ flange profile. It can be mounted on the intake/exhaust vents in order to prevent the impurities from entering the ductwork.

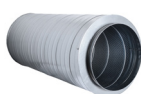
Product Overview

PRODUCTS

VENTILATION SILENCERS



SIL-50



SIL ≥Ø355



SIBRL



SIBOL



SIRL

Silencers (attenuators) for circular ductwork systems.
Insulation material: mineral wool
Insulation thickness: 50 mm or 100 mm
Connection type: male or female
The diameter sizes > 315 mm require ordering the NSL male couplings.



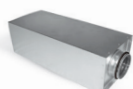
SIL-GL



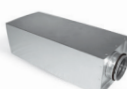
SI-GL



SPLL-25



SPLL-50



SPLL-CR



SPLL-CRQ

Silencers with a steel rectangular casing made of rectangular duct and inner perforated cladding.

Additional mineral wool insulation is available, with a slanted veil so that it increases the sound-absorbing surface of the silencer.



SPLL-30



SPLL-B-30



BSIL



SLEFL



SLEFL-P



SLEAL



SLESD

Attenuating bends and flexible silencers. Various materials. Aluminum-polyester or polyethylene coating.

Silencers made of AlnoFlex duct, Aluduct or textile ducting.

Wool insulation of 25 mm thickness. Available version with EPDM seals.



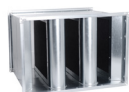
SLEAF



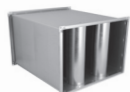
SLEFD



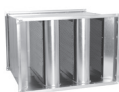
SLEST



SLC



SRC

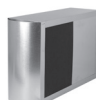


SPC

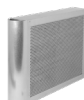
Silencers for rectangular ductwork. The silencers consist of the casing and baffles.



K-SLC



K-SRC



K-SPC

Different types of baffles: absorption baffles, absorption-resonator baffles, absorption-resonator-perforated baffles.

Product Overview

PRODUCTS

FLEXIBLE DUCTS



AF-AL



AF-SN

Semi-flexible ventilation ducting.
Materials: aluminum and stainless steel.



ALAD-L



ALAD-3



ALAD-HY-3



ALAD-HY-L

Aluminum flexible duct - high temperature.
Hygienic version is protected with an antibacterial coating..



ALSD-L



ALID-L



ALSD-3



ALID-3

Thermally and sound insulated flexible ducts. Insulation thickness: 25-50 mm.

The product is characterized by low emission level of VOCs (volatile organic compounds).

The vapor barrier protects the wool against condensation formed by the temperature difference. Classified as low flammable.



ALSD-PE-L



ALSDL-PE-L



ALSDL-PE-L



ALAD-M-L



POAD



POID



ALID-HY-3



ALID-HY-L

Different materials and properties of flexible ducts: plastics, high temperature, with antibacterial coating, protected with vapor-proof foil, with the Marine certificate.

Insulated ventilation duct sleeves.

Ducts with round and rectangular cross-section.

The version with an inner PET liner below the insulating layer makes it easier to put the sleeve on a duct without any risk of pulling or ripping the mineral wool.



PVC-A



COM-F



VINYL-R-DUCT



VINYL-S-DUCT



SLVD-25



SLVD-50



SLVD-PE-25



SLVD-PE-50



SLVD-PU

Product Overview

PRODUCTS

FLX-REKU FLEXIBLE AIR DISTRIBUTION SYSTEM



FLX-HDPE-63



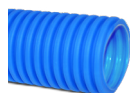
FLX-HDPE-A-63



FLX-HDPE-75



FLX-HDPE-A-75



FLX-HDPE-90



FLX-HDPE-A-90



FLX-CS-PVC



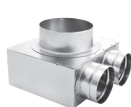
FLX-CF-PVC

Plastic semi-rigid ducting for air distribution. Available version with inner antibacterial coating, meet the requirements of EN ISO 22196:2007. Diameters: 65, 75 and 90 mm.

Mechanical strength rating: 450 N. Temperature resistance: -20C to + 60C, class B2. End caps for PVC semi-rigid ducts. End caps fit also plenum boxes



FLX-SGRL



FLX-PRO



FLX-PLO



FLX-PLO-L-75-2

Plenum boxes for air valves and grilles. Any configuration of spigots in plenum boxes is available.

Spigot diameters: 63, 75 and 90mm.

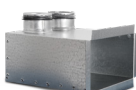
Available also insulated plenum box version - FLX-PRI. These plenum boxes have inside a insulation lining made from 9 mm thick rubber foam.



FLX-PLO-PL-75-2



FLX-PRO-L-63-3



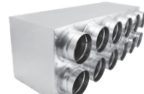
FLX-PLO-MOV



FLX-PRO-R



FLX-PRO-R



FLX-PRO-R-P



FLX-PRI-R

Distribution boxes with seals ensure airtightness class C according to EN 12237.



FLX-PLO-R



FLX-PLO-R



FLX-PLO-R-P



FLX-BP



FLX-RPC



FLX-RSCL



FLX-SP



FLX-SP

Fittings for a flexible air distribution system.



FLX-DAS



FLX-DAT

Shut-off, airtight dampers. Available diameters: 75 and 90 mm. Airtight dampers ensure the airtightness class C.



FLX-MSF



FLX-USZ



FLX-FAX

Female couplings, seals and mounting brackets facilitating the routing of ducting.

Product Overview

PRODUCTS



FLX-SQOL-75-2



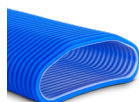
FLX-SQOL-75-1

Silencers for MVHR ducting systems. It's recommended to use it before a plenum box.



FLX-ODSQL-75-2

Offset plenum boxes for MVHR ducting systems. The plenum boxes with 1 or 2 FLX-HDPE duct connector spigots are available.

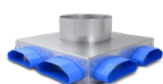


FLX-HDPE-132-52

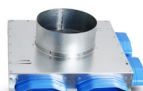


FLX-CS-PVC-132-52

Oval ducting system for air distribution. End caps for ducts are also available.



FLX-PRV

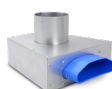


FLX-PRV

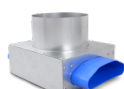


FLX-PRV

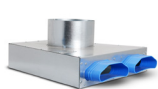
Distribution boxes for oval ducts for single-family house. It's possible to hide the ducting in the ceiling or in the insulation layer.



FLX-PRV-100-1-F



FLX-PRV-125-1-1

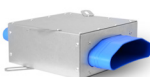


FLX-PRV-125-2-F

Metal plenum boxes for supply and extract valves. Spigot diameter: 80, 100 or 125 mm.



FLX-VNS



FLX-VODS



FLX-VBH



FLX-VBW

Male couplings, vertical and horizontal bends for joining semi-rigid ducting.

Product Overview

PRODUCTS

VENTILATION DAMPERS



DARL



DAR



DARL-CV



DAR-CV



DAR-PVC

Regulating dampers for circular ventilation ducts. Available diameters from 80 to 630 mm depending on the damper type.



DASL



DAS



DASL-CV



DAS-CV



DAS-PVC

Available versions with perforated blade.

Available in diameters from 80 to 630 mm. The damperblade position can be fixed with a screw.



DAPL-CV



DAP-CV

Safe edges at the damper ends.



DATL



DAT

Airtight shutoff damper. Meets requirements for class 4 airtightness acc. EN 1751. Available version with 50 mm insulation.



DASL-B



DAS-B



DATL-B



DAT-B

Dampers reinforced with a rod, making it possible to manufacture larger diameters up to Ø630 mm, while maintaining the rigidity of the construction.



DAOSL-IN



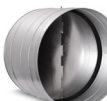
DAOSL



DAOS



DAOSL-B



DAOS-B

Non-return damper, prevent the air backdraft. Airtightness class D. Available also in larger diameters.



DAT-AKU-80



DAT-AKU-200



DAT-AKU-315

Plastic foam damper/ silencer. The dampers are made of non-flammable material.



GKL



GK



GKML



GKM

Gate damper, hand-operated or with a pneumatic actuator. The sliding gate can open the passage to full clearance.



DATVTL



DATASL



DATVTML

T-piece damper works like 3-way valve. The dampers are used e.g. for GCHX (ground-coupled heat exchangers).

Product Overview

PRODUCTS



DASML



DASML-...-P



DASM



DASM-...-P



DATML

Dampers with mounting plates for actuators. Various damper types: regulating, airtight, with a bypass.



DATML-...-P



DATM



DATM-...-P

Lengthwise and crosswise actuator assembly available. All dampers can be provided with various types of actuators on request.



GBL



GBLM

Iris dampers with stepless control of the ventilation duct air pressure. Manual and automatic mechanism.



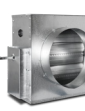
DASQL



DASQ



DASQML



DASQM

Round multi-blade dampers. Manual or automatic mechanism.



DSQ



DSQW



DSQW-A

Rectangular single-blade and multi-blade dampers. Available version made of aluminum.



DSQOW

Non-return multi-blade dampers. Available version made of aluminum.



CFR-PC-ABS-100



CFR-PC-ABS-150



CFR-PC-ABS-250

Constant Air Velocity (CAV) regulator automatically controls the volumetric air flow.



RAVAV



RAVAV-I



RACAV



RACAV-I



RAPAV

Advanced units for airflow regulation: VAV, CAV, PAV. The air flow rate setting of CAV regulators is protected against tampering with a dedicated wrench and nut.



RAVAV-Q



RAVAV-Q-I



RACAV-NUT6



RACAV-KEY

Air flow regulators are also available in rectangular version.

Product Overview

PRODUCTS

SEALING PRODUCTS



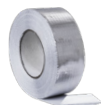
TAL



TALK



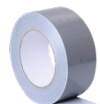
TALT



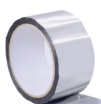
TALE



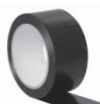
TLV



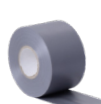
DUCT



MET



TAPV-B

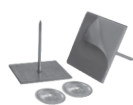


TAPV-S

Sealing tapes used for HVAC applications (heating, ventilation and air-conditioning)

Various thicknesses, widths, temperature resistance and materials.

Available also reinforced sealing tapes with mesh.



GWS



GWZ



GWZ-PI



GWP

Nails for fastening thermal insulation.

Various types: self-adhesive, welding, with perforated foot pins.



USZ-9



USZ-10



USZ-12



USZ-15



USZ-20

Duct seals are made of self-adhesive polyethylene strips used for rectangular ventilation ducts. Temperature resistance: 80°C.



USZ-CE-10



USZ-CE-17

Ceramic seals provide temperature resistance up to 1100°C.



SIL-AKR-5K



SIL-AKR-SQ-5K



SIL-AKR-20L



SIL-AKR-AL-1L



SIL-AKR-AL-12L

Acrylic sealant without harmful solvents or odours. Compound is waterproof.



SIL-AKR-310



SIL-UNI-OCT-300



SIL-UNI-NAT-300



SIL-DEK-310

Roof work and acetic sealants are intended for caulking the flashing sheets of roofs, patios, chimneys and all roof penetrations.



SIL-PPOZ-OCT-300



SIL-PPOZ-NAT-310

Fire-proof silicones are fully resistant on oils and changing weather conditions.



PIA-MON



PIA-MON-PIS



OCSP



ESLA



PIS-PONT

Mounting foam, zinc sprays for steel protection and repair. Mounting foam gun and air operated pump.

Product Overview

PRODUCTS

ACCESS DOORS & CLEANOUTS



IPR



IPR-RRD



IPFQ



IPFQ-RD



IPFD

Access doors for circular and rectangular ventilation ducts, including insulated ones.



FLT



FLKT

Flanged spigots and clamps for ventilation ductwork. The full range of diameters from 80 to 1600 mm.



CSFH



CSHL



CSH

End caps and access blind plug with handle. EPDM seals ensure class D airtightness.



BPKCL-90



BPKCL-90

Cleanout (clearance) bends enable quick and easy cleaning of ductwork. Bends with or without seals.

ROOF COWLS, CURBS AND BASES



PD-B1



PD-B2



PD-DRIP-T



PD-B3

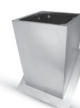


TAGF

Roof bases for round ventilation ductwork. Intended for flat and sloping roof.



BAVE



COKD



COKD-I

Roof curbs used as supports for PD-B1, PD-B2 and PD-B3 roof bases. Weather collars help seal roof penetration openings.



WD-C1



WD-C1-MSF



WD-C2



WD-C2-MSF



WD-B

Circular roof exhaust vents. Flange, female or male connections.

Roof vents are made of galvanized steel, stainless steel and aluminium.



WD-D



WD-E



WD-E-RAL



WD-G



VHLA

The vents can also be painted in any RAL colour on special request.

Supply air/ exhaust air tower is manufactured of segments and it is designed to install directly on ventilation duct.



VHLA-RAL



VHLA-S



VHLA-ST



WD-CS



WD-CS-PART

Roof vents can be equipped with an inner flange for drainage of water to the outside of the vent.

Product Overview

PRODUCTS



HAN-MSF



HAF



WD-TURBO-K



WD-TURBO-KNS

Roof turbine ventilators cap is mounted on top of chimney. Connection types: male, female and flange.



BSAVL-90



BSAV-90



BSILNL-135



BSILN-135

Take-off bends are used for termination of ventilation ductwork made of spiral ducts or other round duct types.



CD-O-P-NS



CD-S-P-NS



CD-P-P-NS



CD-C1

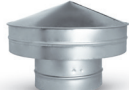


CD-C2

Roof cowls made of perforated metal sheet or with mesh. Roof cowls have few types of connection: flange, female or male.



RHA



VHK

Chimney ventilation cowls used for vertical air exhaust ends in round ventilation ductwork.



PDQ-AI



PDQ-AII



CQKD

Rectangular roof bases and curbs. Available also versions designed for sloping roofs.



CDQ-A



CDQ-B

Roof air intake units are used for rectangular ventilation ductwork. Top part of the intake is equipped with protection wire mesh.



WDQ-A



WDQ-B



WDQ-E

Rectangular roof exhaust vents. WDQ-E features an inner water drain.



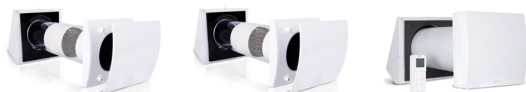
BFQN-135

Air intake and exhaust bend is used to terminate ventilation ducts. The bends are ended with protection mesh and blades.

Product Overview

PRODUCTS

EQUIPMENT & ACCESSORIES

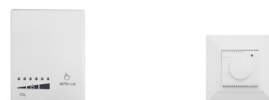


HRU-WALL-100-25 HRU-WALL-150-60 HRU-WALL-150-60-RC

Push-pull, inside wall mounted, decentralized heat recovery unit. Ceramic core heat exchanger with thermal efficiency up to 82%.



HRU-WALL-CONTR HRU-WALL-CONTR-I



HRU-WALL-SEN-CO2 HRU-WALL-SEN-HY

CO₂ and humidity sensors as well as push button controller for HRU-WALL unit. Three speed modes and boost function available.



HRU-PremAir-350 HRU-PremAir-450 HRU-PremAir-500



PremAir App

Heat recovery unit with counterflow heat exchanger; thermal efficiency up to 93.4%. Certified component for passive houses.



HRQ-PremAir-BUT-LM11



HRQ-PremAir-BUT-LM04



HRQ-PremAir-FILT-G4



HRQ-PremAir-FILT-M5



HRQ-PremAir-FILT-F7

The HRU-PremAIR can be controlled by an mobile application.

A full range of dedicated accessories: controllers, filters and sensors. Automatic adjustment with stepless control (Demand Control Ventilation - DCV). Remote control possible by any CO₂ or RH wireless sensor



HRQ-PremAir-SENS-CO2



HRQ-PremAir-SENS-RH



HRQ-PremAir-GATE



HRQ-PremAir-ANTENNA-EXT



HRQ-PremAir-HDE-160-1,5

HDE-PremAIR electric heater for HRV.



HRU-MinistAir-W-250



HRU-MinistAir-W-450

Heat recovery units with thermal efficiency up to 90%. Airflow rates from 220 to 370 m³/h.



HRU-MinistCONT-Man



F7 filter



EU4 filter

Wired and wireless (Wi-Fi) controls for heat recovery unit.

Adjustable operation time by week timer.

Available fine filters for allergy sufferers.

Support humidity and CO₂ sensors.



Humidity sensor



Room air humidity sensor



Duct CO₂ sensor



Room CO₂ sensor

Product Overview

PRODUCTS



HRU-ERGO-250



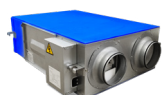
HRU-ERGO-350



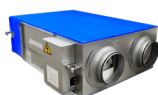
HRU-ERGO-500



HRU-ERGO-650



HRU-ERGO-800



HRU-ERGO-1000

Low profile heat recovery units for under ceiling installation with exchangers for heat and moisture recovery. Wide range of model with max. airflow rates: 250/350/500/650/800/1000 m³/h



HRU-CONTR



HRU-CONTR-TPAD



HRE-ERGO

Controllers for heat recovery units. Counter-flow heat exchangers with heat and moisture recovery for various models.



CO₂ sensor



Humidity sensor



HDE-CO

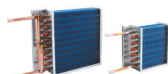


HDW

Accessories for the heat recovery unit - CO₂ and humidity sensors. It's possible to connect a pre-heater or secondary heater.



HDW



HE-HDW

Water duct heaters. Suitable for duct installations with a diameter of 100-500 mm. Coil heat exchangers can be sold separately.



2-way valve



3-way valve



CQ230A actuator



TRY230 actuator

Accessories for water heaters. It is possible to connect a 2-way or 3-way valve with the actuator and with thermostat.



Indoor thermostat



AKF10 duct air temperature sensor



HDE



HDE-CO

Electric duct heaters. Available versions: without contactor, with one contactor or with two contactors.



PULSER



TTC2000



TM1-P thermostat



R31 thermostat



TG-K330 temperature sensor

Accessories for electric heaters: regulators, thermostats and duct sensors

Product Overview

PRODUCTS



Alnor actuator
DM-ML-06



Alnor actuator
DM-ML-08



Alnor actuator
DM-FL-05



CM actuator



LMC actuator



LM actuator



NM actuator



SM actuator



LF actuator



NF actuator

Damper actuators. Different versions of power supply, torque and reaction time.

As standard, the actuators have a close-open or 3-step control (actuators with spring return only close open).

The actuators are equipped with a universal clamp which enables connecting to round and square rod.



DV



DV-PP



DV-PP-L

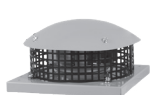


DV-SQ

Round and rectangular duct fans.

Capacity: 130-1300 m³/h - round fan

Capacity: 1150-3400 m³/h - square fan



DV-ROF-R



DV-ROF-V



DV-ROF-RHT

Roof fans with vertical and horizontal air discharge. A very wide range of performance.



DV-REG-L-1



DV-REG-L-2,5



DV-REG-2



DV-REG-5

Speed controllers for fans. Surface or flush mounted. Permissible load from 1A to 5A.



PDI-BRF /
PDI-BRV



PDI-BRF-45 /
PDI-BRV-45



PDI-S-BRF /
PDI-S-BRV



PDI-S-BRF-45 /
PDI-S-BRV-45



PDI-S-BRF-45

Roof bases for fans. Wool insulation 30-50 mm. Adjustable angle to roof slope between 1-60 degree. Different heights.



PDI-BRF-PLATE -
PDI-BRV-PLATE



PDI-BRF-KILL /
PDI-BRV-KILL



PDI-BRF-KILL-45 /
PDI-BRV-KILL-45



PDI-BRF-KILL-UP /
PDI-BRV-KILL-UP

Mounting plates and duct stub connectors for SPIRAL duct and fans. Stub connector can be manufactured at an angle of 1-60 degrees.

Product Overview

PRODUCTS

FIRE VALVES AND DAMPERS



FDA-12-M



FDA-12-T



FDA2-12-M



FDA2-12-T



FDA2-12-M



CFDM



FDMA



FDMB



FDMC



FDMD



MSD



MSD



SEDS



SEDM



CFDM-V-S



CFDM-V-E

Shut-off fire dampers are applicable for installation in the general ventilation systems

Fire resistance EIS 120, 90 and 60 - depending on the needs, the customer can choose a fire damper that meets certain criteria.

The fire dampers meet the criteria of the class C airtightness. Available in version with a manual mechanism or BELIMO actuator.

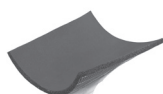
Smoke extraction dampers for ventilation systems. The fire dampers meet the criteria of the class C airtightness.

Set of fire damper and air valve joined with a casing.

Product Overview

PRODUCTS

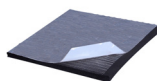
INSULATION



ARMAFLEX



FOAM-B



FOAM-G



FOAM-AB



FOAM-AG



FOAM-TYPE



FOAM-DUCT



FOAM-FLX

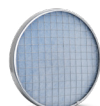
The synthetic rubber foam. It is used for thermal and acoustic insulation

Different thicknesses of foams are available. One side can be self-adhesive and reinforced with a mesh. A version with an aluminum coating is also available.

AIR FILTERS



UFI



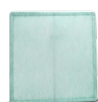
UFI-W



F-STR



FSBQL



FSBQ-I



FSBQ-W



MOCarz



MOCarz-CA



MOCarz-W



FSBQ-W-CA

Duct filters for air filtration. The filter housings allow for easy filter replacement and are fastened with clamps.

Filter elements are available in filtration classes EU3 and EU5 in accordance with the new ISO 16890 standard. Filters in casing, pleated filters and with a protective wire are also available.

It's recommended to install a smog filter on the supply ducts in domestic ventilation and heat recovery systems.



FSCQ



FSQ

Cartridge filters for air filtration in rectangular ventilation ducts.

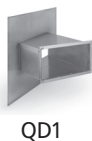
Product Overview

PRODUCTS

RECTANGULAR VENTILATION DUCTS AND FITTINGS



QDN



QD1

Rectangular ventilation ducts in accordance with EN 1507 standards.
Fitted with flange frames.



QBF



QBFR



QB



QBR



QBR1

Rectangular elbows and bends with variable cross-section. Available versions in stainless steel and aluminum.



QPR2



PRL7



PR7



QPR6



PRL1

Eccentric and concentric reducers for joining two rectangular ducts of various dimensions.

Square-to-round transitions, rectangular flexible duct connectors, PQ framed wire mesh and end caps for rectangular ventilation ducts.



PR1



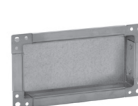
TR6



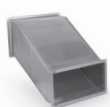
QILA



QILN



QES



QPR3

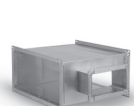


QPR4

Offsets facilitate bypassing obstacles along the ductwork route. Available version with variable cross-section.



TR



TR1



TR7



TR8



TR9

T-pieces for rectangular ventilation systems. Different models:

- concentric and eccentric
- with a rectangular or round takeoff, tapered, symmetrical taper,
- asymmetrical twin tees,
- with take-off bends,
- wye tees (pants).



TR2



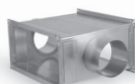
TR3



TR4



TR5



CZ1



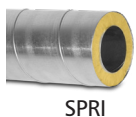
CZ2

X-pieces for rectangular ductwork. Available with round and rectangular take-offs.

Product Overview

PRODUCTS

PREINSULATED DUCTS AND FITTINGS IZOL® SYSTEM



SPRI



SPRPI

Round preinsulated ducts. Insulation thickness 25/50/100 mm. Different material configurations.



BSLI-90



BSLI-60



BSLI-45

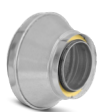


BSLI-30



BSLI-15

A wide range of preinsulated bends. Insulation thickness: 16-100 mm. Inner bend is equipped with an EPDM rubber seal.



RSCLI



TPCLI



MSFI



NSLI

Preinsulated reducers, T-pieces and couplings for IZOL® system.



RPCLI



RPCFLI

Transition piece between IZOL® system and SPIRAL® system.



CPFI



CSLI



CSFIO



CSFFIO

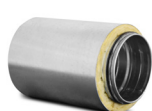
End caps for terminating preinsulated ducts. Different insulation thicknesses: from 25 to 100 mm.



DASLI



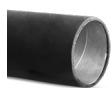
DATLI



DAOSLI

Preinsulated shut-off dampers. The damper blade position can be locked in position with screws.

DUCT AND FITTINGS INSULATED WITH RUBBER FOAM FOVENT® SYSTEM



F.-SPR-C



F.-SPRP-C

The rubber foam insulated ducts are available in 1- and 2-metre sections.



F.-BPL-90



F.-BPL-45



F.-BPKF-90



F.-BPKF-45

Pressed bends insulated with rubber foam. Available with 90° and 45° angles, in the short version or in the female end version.

Product Overview

PRODUCTS



F.-BSL-90



F.-BSL-45



F.-BSLF-90



F.-BSLF-45

Segmented bends insulated with rubber foam. The bends are available also in the short version or in the female end version.



F.-RPCL



F.-RSCL



F.-RSCLF



F.-TPCL

Reducers and T-pieces insulated with rubber foam. Insulation thickness: 9, 13, 19, 25 mm.



F.-NSL



F.-MSF



F.-CPF



F.-CPF

Couplings and end caps for ventilation ducts and fittings. They are available in female and male end versions.



F.-DASLI



F.-DATLI



F.-DAOSL

Shut-off, airtight and inside duct dampers insulated with rubber foam.

DUCTS AND FITTINGS MADE OF EXPANDED POLYPROPYLENE (EPP)



EPP-SRGL

EPP ducts are manufactured in 500 or 1000 mm and diameters 125-180 mm. The duct is supplied with one female coupling in the set.



EPP-BPF-90



EPP-BPF-45

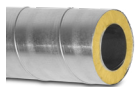
EPP bends are supplied with one female coupling. The standard wall thickness is 15mm. Available on request 43 mm thick.



EPP-MSF

EPP female coupling for connecting ducts and fittings. This type of connection eliminates thermal bridges.

PREINSULATED DUCTS AND FITTINGS - IZOL® SAFE-SYSTEM



SPRI



SPRPI

Ventilation ducts for air insulated Izol® Safe System.



BPLIL-90



BPLIL-45

Air insulated pressed bends; air is not only a great insulator, but also ensures lightweight design.



BSLIL-90



BSLIL-60



BSLIL-45



BSLIL-30



BSLIL-15

Air insulated bends. Double wall insulated bends consist of inner and outer bend, equipped with an EPDM rubber seal.



RSCLIL



RSCLFLIL



TPCLIL

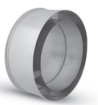


NSLIL



MSFIL

Reducers, T-pieces and couplings insulated with air. The fittings are available in female, male and female-male end versions.



CPFIL



CSLIL

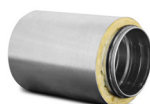
End caps for ducts and fittings of preinsulated IZOL® safe-system.



DASLIL



DATLIL



DAOSLIL

Air-insulated dampers with the possibility of locking the damper blade position. In-duct damper.

Product Overview

PRODUCTS

CHEMICALLY RESISTANT PLASTIC DUCTS AND FITTINGS



PVC-SRGL



PVC-QDNF



PVC-QDNT



PVC-QDN

Chemically resistant plastic ducts. Circular and rectangular ductwork. Available versions: ducts with female end, flanges & bare ducts.



PVC-BPF-90



PVC-BPF-45



PVC-QBFF

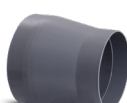


PP-QBFF

Plastic bends for round and rectangular ductwork. Various materials: PE, PP, PPs, PVC, PVCW, PPs-EL and PVDF.



PVC-RPC



PVC-RPC



PVC-QPR6F



PVC-QPR2F



PVC-PR7F

Plastic reducers. Concentric and eccentric reducers. Square-to-round transition is also available.



PVC-TPCF-90



PVC-TPVF-45



PVC-YSVF



PVC-TRF



PVC-TR

Plastic ventilation T-pieces: 90° and 45°. The fittings are available with female ends or with flanges.



PVC-MSF



PVC-CPF



PVC-FLS



PVC-FLSF



PVC-FLSF

Plastic couplings and end caps for ventilation ducts. Flange gaskets to join fittings with flange ends.



PVC-ASVF-30



PVC-WDF



PVC-TAGF

Plastic roof cowls, base and angle take-offs. Angle take-off with mesh 30°.



PVC-DATF



PVC-DSQF-V



PVC-DSQF-H



PP-DATFM



PP-DSQW

Regulating dampers for circular and rectangular ductwork. Regulating air damper for the actuator installation.



PP-NKSD-R



PP-SHR



PP-SHR-RM



PP-SHR-RMO

Plastic circular air diffuser, grilles and mounting frames.



PVC-SILF

Sound attenuator made of plastics.

TRANS-QUICK SYSTEM



FLKA



FLKA-C

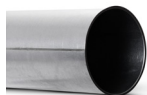


FLKA-CD

Connecting clamp (pull rings) with bolt and pin for the clamp-together system. Available clamps with airtightness class D.



SRGLQT



SRGWQT

But-welded pipes for dust extraction system. TRANS-Quick system is made of galvanized steel, 0.7 & 0.9 mm thickness.



TELQT

Telescopic pipe is used to provide variable length adjustments (500-950mm) in ductwork w/o additional cutting or welding.



BSQT-90



BSQT-60



BSQT-45



BSQT-30



BSQT-15

Segmented bends are made of galvanized steel, 0.7 & 0.9 mm thickness. Other bends degree 5-85° available on request



BSDQT-90



BSD2QT-90

Segmented bends with smooth radius $r=1.5d$ or $r=2.0d$. Other bends degree 5-85° available on request



RSCLQT



RSLQT

Concentric or eccentric reducer for TRANS-Quick system. Diffusor / confusor increases or decreases the pressure in ventilation system.



TPCQT



TPRQT



TSVQT



TRVQT-45



YSVQT-45

A wide range of T-pieces: equal, reducing, reducing 45 degree (lateral), Y-pieces. The main advantage of this system is quick assembly.



ILSQT



NSLQT



MSLFQT



ILAFQT

Connectors and adapters to join TRANS-Quick System with other ducting systems.



CSHQT

The end cap with a handle is used to terminate a ductwork branch in the clamp-together system.

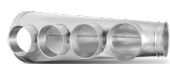
Product Overview

PRODUCTS



SILQT-GL

Silencer for TRANS-Qucik system.
Insulation thickness: 100, 50 and 25 mm;
lengths: 600 and 900 mm.



MPRQT



PUQT-AS



PUQT

Reducing manifold is used for branching
out extraction ducting, commonly by using
PUQT flexible hoses.



IPRQT-DUCT-H

The access door is pre-installed on the
TRANS-Quick pipe. Equipped with hinges,
draw latches and EPDM seals.



DASQT



DATQT



DAOSQT

Regulating, airtight and backdraft dampers
for dust extraction systems. The backdraft
damper is available in reinforced version.



GKQT



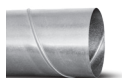
GKMQT

Sliding dampers for the clamp-together
system. Equipped with manually operated
damper plate or with a pneumatic actuator.

Product Overview

PRODUCTS

SMOKE EXTRACTION DUCTS AND FITTINGS - SMOKE SYSTEM



SPR-Z-SMO

Spiral duct, fire resistance class:
E₆₀₀ 120 (h_o) S1500 single, for single-compartment smoke extraction applications.



BSL-SMO-90



BSL-SMO-45



BSDL-SMO-90

Segmented bend for smoke extraction systems, $r=d$ or long bend $r=1.5d$. Available also other angles.



RSCL-SMO

Segmented male reducers for single-compartment smoke extraction systems and combined (dual-function) systems.



NSL-SMO



MSF-SMO

Couplings for SMOKE system.



ILSL-SMO

Branches for smoke extraction system. Welding points and other joints must be covered with high-temperature sealant.



CSL-SMO



CSF-SMO



CSFH-SMO

Segmented end caps for smoke extraction systems: male, female or with a handle.



ILSNL-SMO



ILSNF-SMO



ASVL-45-SMO

Take-offs are end pieces for SMOKE System. Mesh protects dirt from entering inside the ductwork.



SSCL-SMO



SSL-SMO



SPSL-SMO

Collar saddles for SMOKE System is used as a multi-purpose piece for construction of T-pieces or branches for SPR-Z-SMO duct.



TSCL-SMO



TSL-SMO



TPCL-SMO



YSVL-SMO

Segmented, pressed T-pieces and Y-pieces for smoke extraction systems.

Product Overview

PRODUCTS



ILA-NSL-SMO-SIL



ILA-K-SMO-SIL

Flexible duct connectors are used for ducts longer than 5 m.



SIL-GL-SMO

SIL-GL-SMO circular silencer designed for single-compartment smoke extraction and combined (dual-function) systems.



SGR-SMO

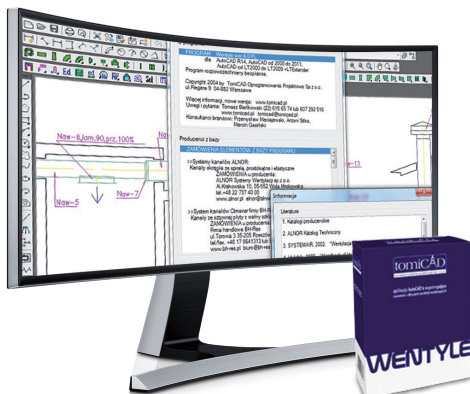
Exhaust grilles for installation directly on circular duct SMOKE System.



B2B PLATFORM

Log in to B2B Platform and enjoy new possibilities:

- Decide the way of service, save money or pay and demand,
- Monitor the status of your orders, save the time of your employees,
- Have on-line insight into your accounts,
- Be sure of continuity of deliveries and improve your cash flow,
- Check your stock levels,
- Ask on-line questions,
- Download our catalogues, price lists and certificates.



UNLIMITED DESIGN FLEXIBILITY:

Our product libraries are available in the following programs:

- Revit - BIM libraries.
- MagiCAD - add-on to the AutoDesk - 2D and 3D models.
- VentPack - add-on to the FluidDesk - 3D models.
- Wentyle - the basic version of the design software is available for free. Designing only 2D models.

The softwares are used for drawing and calculating ductwork with a circular or rectangular cross-section. They enable an efficient ductwork planning and easy implementation of changes to projects. The software generate an automatic list of components used in the project. The libraries are frequently updated with new products: heat recovery unit, fans and fire dampers.



QUOTATION SUPPORT WITH AlnorCAM:

Have confidence and flexibility in Your actions:

- Minimize mistakes when processing documentation
- Speed up order processing time while maintaining a competitive prices and quality.
- Make orders that suit Your needs.
- You can benefit more by both calculating in AlnorCAM and making an order via B2B platform.
- Software is FREE.



SOUND ATTENUATOR SELECTION SOFTWARE:

See for Yourself how easy it is:

- Select silencers for the fan and the expected sound level.
- Compare acoustic parameters of chosen silencers.
- Export technical parameters to the specification, prepare complete specification.
- Select the best silencer model matching the expected acoustics.
- Make automatic quotations - Premium version for wholesalers and distributors.
- Software is FREE.

Alnor Ventilation Systems Ltd.
 Poland, 05-552 Wola Mrokowska, Aleja Krakowska 10
 Tel.: +48 22 737 40 00, Fax.: +48 22 737 40 04
 e-mail: export@alnor.com.pl, www.alnor.com.pl