



Shaping tomorrow's
technologies

Optical Communication BU.

Quality

ACON is a company of Quality.

With well recognize the need for precision in manufacturing optic fibre associated products, our ISO 9001/14001, ISO/TS16949 & OHSAS 18001 certifications are clear evidence of this commitment.

ACON as a Taiwan based company which owns and operates its manufacturing facilities in TianJin and Shen Zhen (China). These give us full control of the manufacturing and inspection procedure which ensure optimum quality.

Customized Solutions

As an engineering-driven company, ACON has in-depth experience in different technologies and in-house capabilities, including design, development, manufacturing and testing of high-quality precision fiber-optic products for many different applications.

ACON has been so experienced to deal with the demand for any customized solutions, which have to satisfy increasingly specific customer requirements in terms of technical performance, high reliability, short lead-time delivery and much more.

For special product or any development requests, please do not hesitate to contact us for more information.

Products

The extensive ACON fiber-optic product offering includes a full range of passive interconnected solutions, FTTA/ FTTH solutions, Data center solutions and tools.

A comprehensive offering

- Complete range of connectors, adapters, patchcords and accessories.
- FTTA / FTTH Solutions.
- Data Center Solutions.
- Customized Solutions.



Connector

P.02	Ferrule
P.03	LC HD
P.05	LC / SC
P.08	FC / ST / MTRJ
P.09	Field Installation
P.10	Mechanical Splice

Adapter

P.11	LC / SC
P.13	FC / ST / MTRJ
P.14	Hybrid / Keystone

Patchcord

P.15	Grade B
P.16	Small Form LC / SC / FC / ST
P.17	Multi-Fiber Breakout
P.18	PLC / Attenuator
P.19	Loopback

FTTA Solution

P.20	FTTA Solution
------	---------------

MPO / MTP® Solution

P.22	MPO
P.25	Adapter

Data Center Solution

P.26	144-Port HD Panel Module
P.27	Open Rack Systems
P.28	Cable management
P.29	Cabling enclosure / Frame & Panel & Cassette

Accessory

P.32	Accessory
------	-----------

Ferrule

ACON's Connector & Patchcord are all using self-manufactured Ferrules. With more than 40 manufacturing processes and well management to control diameter / concentricity / surface...etc. ACON provides the best quality to satisfy your demands.

- Standard ferrule for 2.50 SC / FC / ST, SM & MM Connector
- Small Form Factor for 1.25 LC / MU, SM & MM Connector
- APC Cone & Step type ferrule



Ferrule Specification				
Ferrule Type	Ferrule P/N	ID (mm)	Concentricity (μm)	Type
SC FC ST	1110	0.125~0.126	≤ 0.0005	SM
	1140	0.125~0.126	≤ 0.0010	
	1580	0.125~0.126	≤ 0.0010	SM/APC
	1740	0.125~0.126	≤ 0.0005	
	1170	0.125~0.126	≤ 0.0050	MM
	1180	0.126~0.127	≤ 0.0050	
LC MU	2101	0.125~0.126	≤ 0.0003	SM
	2111	0.125~0.126	≤ 0.0005	
	2121	0.125~0.126	≤ 0.0008	
	2141	0.125~0.126	≤ 0.0010	
	2161	0.126~0.127	≤ 0.0010	
	2171	0.125~0.126	≤ 0.0060	MM
	2180	0.127~0.128	≤ 0.0060	
	2181	0.126~0.130	≤ 0.0060	

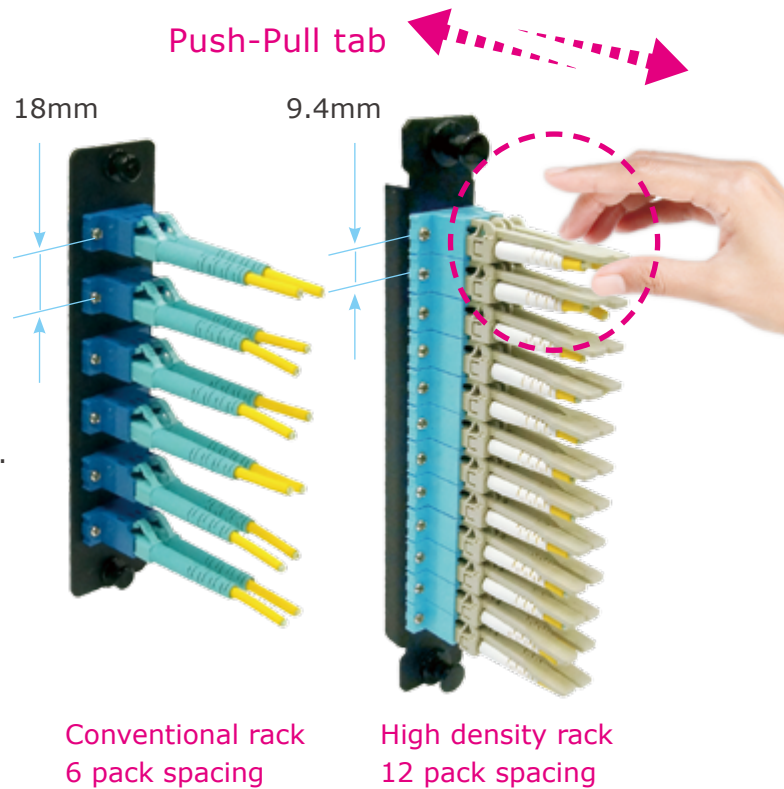
LC HD / LC HD Uniboot

Features

- ACON unique design
- Activation of lever provides ease of connect and disconnect.
- No special tools are required.
- Mini boot allows for more assembly space.
- Increase panel density more than half
- Corning and various fiber options
- Works both with simplex and duplex applications.
- Stable performance.

Performance

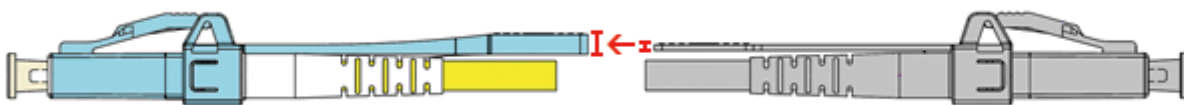
- Insertion Loss ≤ 0.2 dB typical MM
 ≤ 0.15 dB typical SM
- Operating Temperature $-20^{\circ}\text{C} \sim 70^{\circ}\text{C}$
- Storage Temperature $-40^{\circ}\text{C} \sim 85^{\circ}\text{C}$



Increase more than half in density

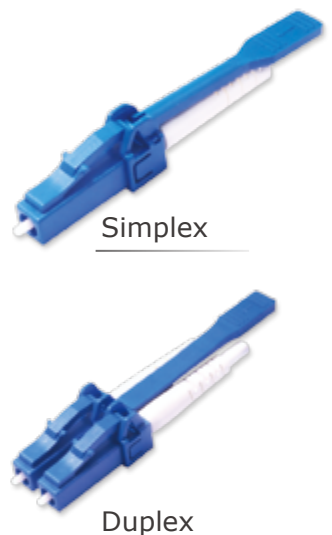
ACON LC HD connector with "push-pull" tab/ rod design which makes density increase more than half in panel and easily for the connector to be disengaged from densely loaded panels without the need for any tools.

ACON New High Density LC HD Push-pull Connector



Thickness strength function

LC HD Specification		
Assembling Type	Diameter (mm)	Type
One Piece	1.8	Simplex
Multi Piece	2.0	Duplex
	3.0	

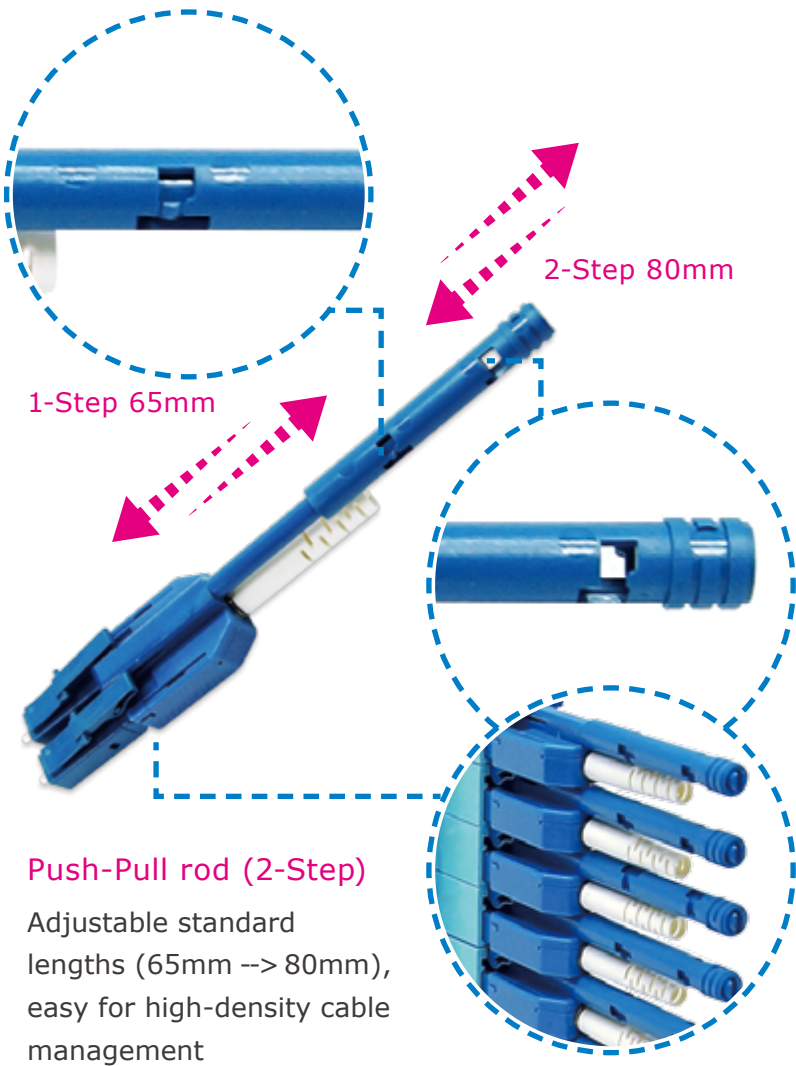


LC HD / LC HD Uniboot

Handy gadget for dense panels

ACON LC HD Uniboot lever design utilizes an adjustable “push-pull” rod which available in 2 standard lengths (65mm & 80mm)

The new “Push-pull rod” design brings more considerate installer manner for precisely access to the extremely dense fiber optic panels while cabling or maintenance.



Push-Pull rod (2-Step)

Adjustable standard lengths (65mm --> 80mm), easy for high-density cable management



Switchable Uniboot



HD Uniboot (Tab)



HD Uniboot (Rod)

LC HD Uniboot		Specification
Assembling Type	Diameter (mm)	Type
One Piece	2.0	Switchable Uniboot
Multi Piece	3.0	
	5.0	HD Uniboot

LC Switchable Uniboot



Open the upper clip.

Switch the polarity.

Close the upper clip to match the bottom.

LC / SC / FC / ST / MU / MTRJ

Features

- Meet EIA/TIA 604-10 and IEC 61754-20 standards.
- Economical in both design and termination process.
- Snap-in connector design Precision mechanical dimensions.
- Reduce assembly time and simplify training.
- Reduce maintenance and create consistent optical performance.

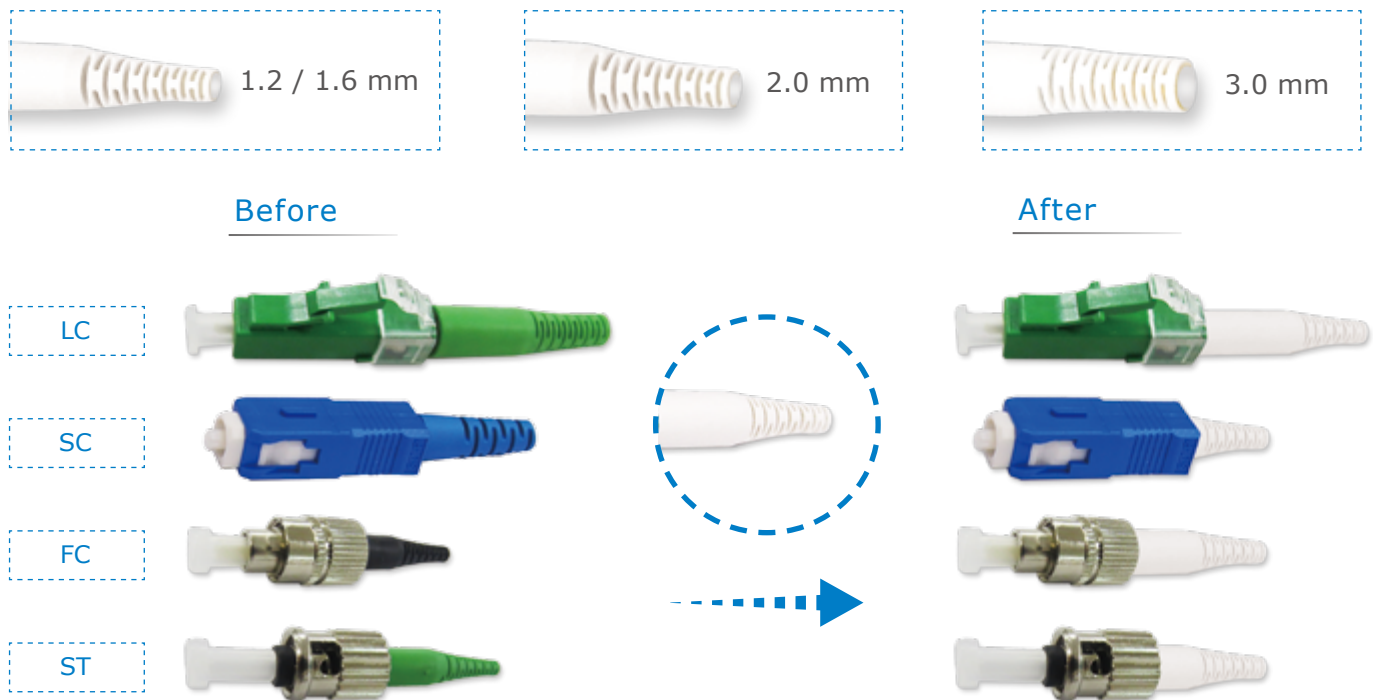
Performance

- Insertion Loss ≤ 0.2 dB typical MM
 ≤ 0.15 dB typical SM
- Operating Temperature $-20^{\circ}\text{C} \sim 70^{\circ}\text{C}$
- Storage Temperature $-40^{\circ}\text{C} \sim 85^{\circ}\text{C}$

Universal boot

ACON's universal boot series gives the highest value for better stocks management and consistent process.

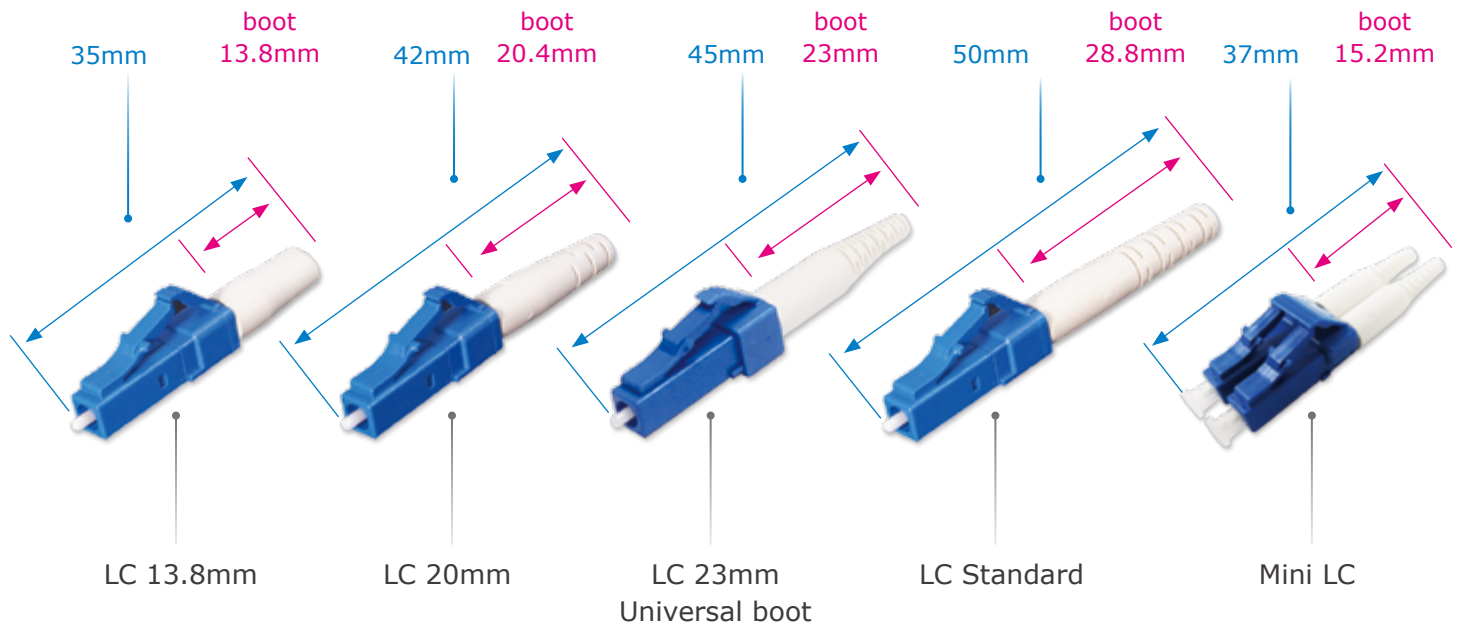
ACON provides a wide range service of universal boot selections.



Universal Type Boot Specification				
Connector Type	Assembling Type	Type	Diameter (mm)	Boot length
LC	One Piece Multi Piece	Simplex Duplex	1.2	23mm
SC			1.6	
FC			2.0	
ST			3.0	

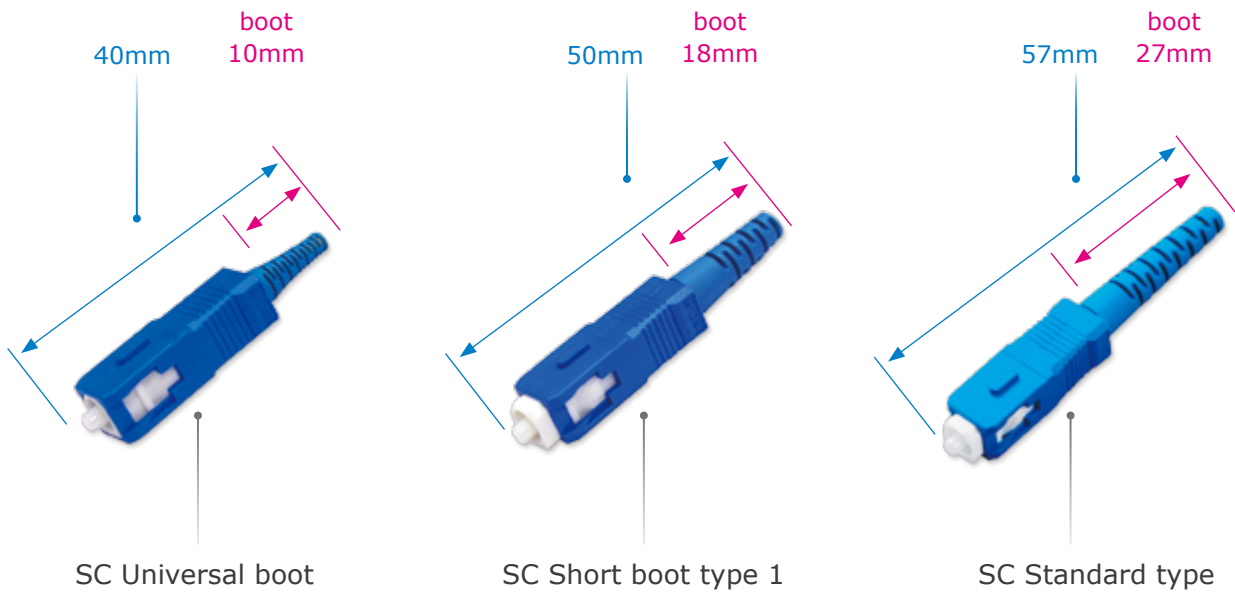
Connector

LC / SC / FC / ST / MU / MTRJ



LC Specification			
Assembling Type	Other Requirement	Diameter (mm)	Type
One Piece Multi Piece	LC 13.8mm Short Boot	0.9	Simplex Duplex
	LC 20mm Short Boot	1.2	
	LC 23mm Short Boot	1.4	
	LC Unibody	1.6	
	Mini LC	1.8	
	90 Degree Boot	2.0	
	45 Degree Boot	2.4	
		3.0	
		4.0	

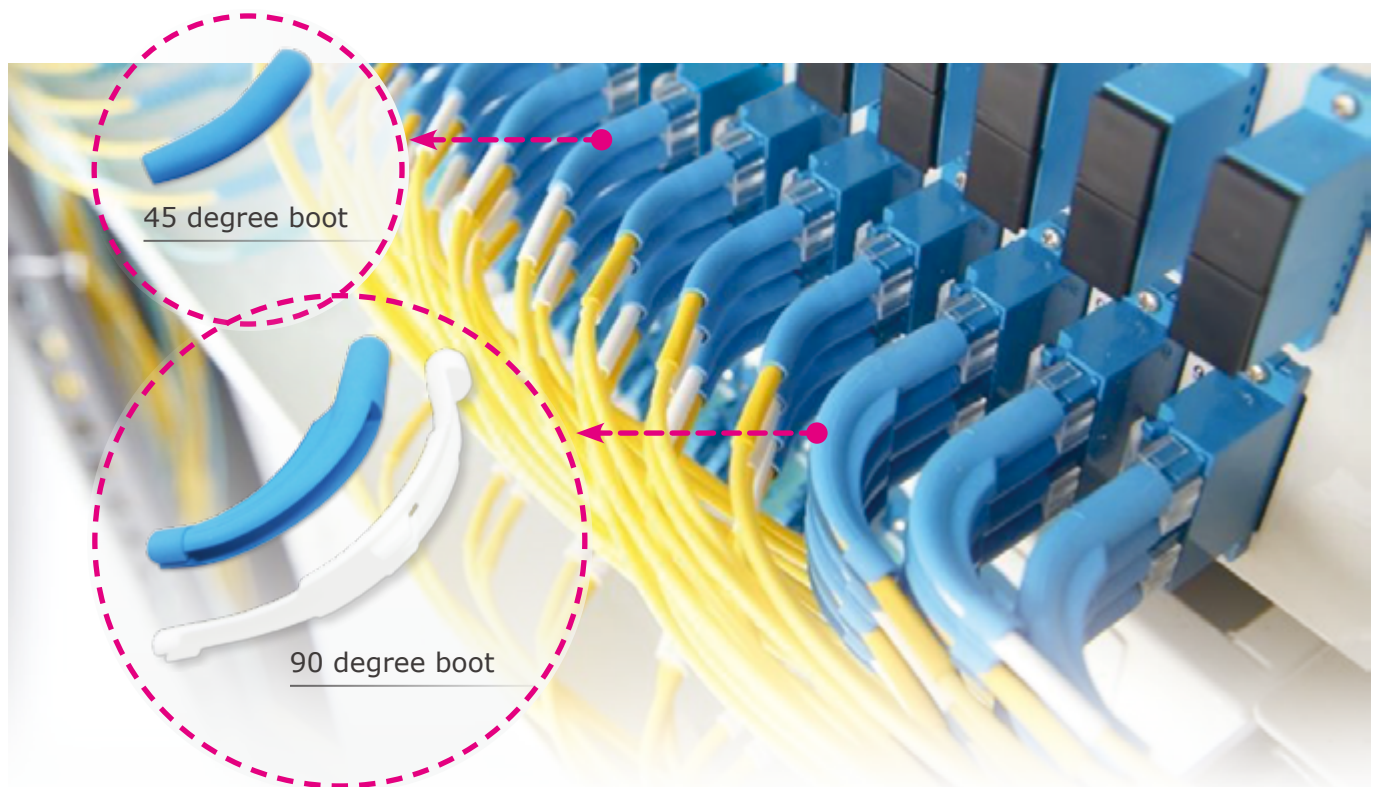
LC / SC / FC / ST / MU / MTRJ



Angle Boot

Features

- 45 degree / 90 degree boot for option.
- Designed for LC / SC / FC / ST type 2.0mm connectors.
- Better cable management with increasing space.



LC / SC / FC / ST / MTRJ



SC Specification			
Assembling Type	Other Requirement	Diameter (mm)	Type
One Piece Multi Piece	SC 23mm Short Boot SC 30mm Short Boot	0.9	Simplex Duplex
		1.2	
		1.6	
		1.8	
		2.0	
		2.4	
		3.0	
		4.0	



FC Specification			
Assembling Type	Other Requirement	Diameter (mm)	Type
One Piece Multi Piece	FC 25mm Short Boot	0.9	Simplex
		1.2	
		1.8	
		2.0	
		2.4	
		3.0	



ST Specification		
Assembling Type	Diameter (mm)	Type
One Piece Multi Piece	0.9	Simplex
	1.2	
	1.8	
	2.0	
	2.4	
	3.0	



MTRJ Specification		
Assembling Type	Other Requirement	Diameter (mm)
One Piece Multi Piece	Male	1.8
	Female	3.0

In Field Installation

Applicable to connection with field mountable indoor cable, pigtail, patchcord and transformation of patchcord in data room and directly used in specific ONU. It would be widely used in FTTH project of network revolution.

SC

Features

- It could be applied to drop cable and indoor cable
- Economical in both design and termination process
- Snap-in connector design Precision mechanical dimensions
- Reduce assembly time and simplify training
- Reduce maintenance and create consistent optical performance
- Stable performance
- Operation Time : about 15s (exclude fiber presetting)

Performance

- Insertion Loss SC / APC ≤ 0.3 dB typical SM
SC / PC ≤ 0.25 dB typical SM
- Operating Temperature $-40^{\circ}\text{C}\sim 85^{\circ}\text{C}$
- Tensile Strength > 50 N



Field Installable SC Specification			
Diameter (mm)	Coupling Color	Boot Color	Type
3.0 x 2.0 Drop Cable	Blue	Blue	Simplex
3.1 x 2.0 Drop Cable	Green	Green	

LC

Features

- Easy to install and operate for emergency
- It could be applied to 0.9/2.0/3.0 cables
- It is used to FTTX application, for example
 - ➔ Cable connection cabinet
 - ➔ Optical jumping user distributing cabinet
 - ➔ Optical splitting user distributing cabinet
 - ➔ Optical cable distributing box
 - ➔ Photoelectric telecommunications adapter
 - ➔ ONT optical terminal equipment

Performance

- Insertion Loss LC / APC ≤ 0.2 dB typical SM
LC / PC ≤ 0.2 dB typical SM
- Operating Temperature $-40^{\circ}\text{C}\sim 85^{\circ}\text{C}$



Field Installable SC Specification			
Diameter (mm)	Coupling Color	Boot Color	Type
0.9	Blue Green	Black	Simplex
2.0			
3.0			

Mechanical Splice

ACON mechanical splice uses v-groove design to connect the fibers together without fusion splicer and polishing.

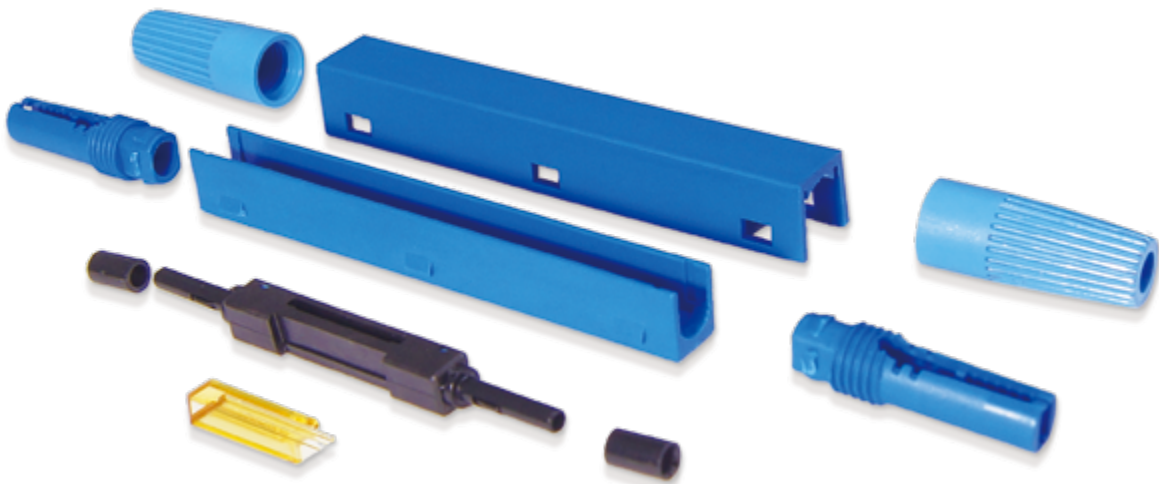
ACON mechanical splice comes with pre-loaded index matching gel to allow good insertion of less than 0.5dB. This is recommended for indoor application and provides a high performance with easy and fast installation.

Features

- Easy to install and operate for emergency or permanent installations
- Splice accommodates fiber diameter from 0.25mm, 0.9mm, 2.0mm to 3.0mm
- Economical in both design and termination process
- Snap-in connector design precision mechanical dimensions
- Reduce assembly time and simplify training
- Reduce maintenance and create consistent optical performance

Performance

- Insertion Loss ≤ 0.5 dB typical MM
 ≤ 0.5 dB typical SM



Mechanical Splice		Specification	
Coupling Color	Boot Color	Diameter (mm)	Type
Blue	Blue	0.9 2.0 3.0 Drop Cable	Simplex

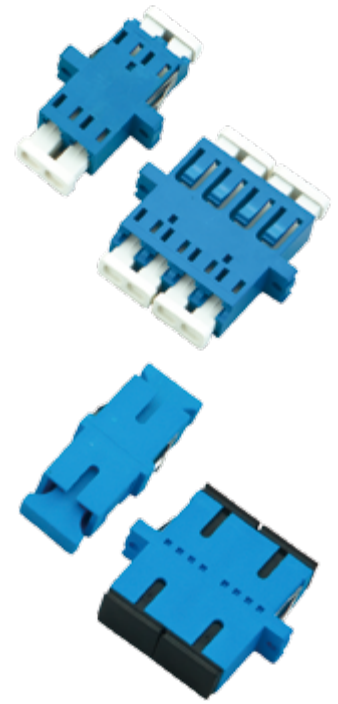
LC / SC

Features

- Snap-in connector design precision mechanical dimensions.
- Reduce assembly time and simplify training.
- Reduce maintenance and create consistent optical performance.
- Stable performance.

Performance

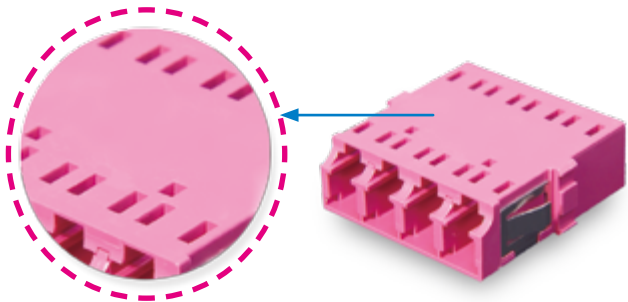
- Insertion Loss ≤ 0.2 dB typical MM
 ≤ 0.2 dB typical SM
- Operating Temperature $-20^{\circ}\text{C}\sim 70^{\circ}\text{C}$
- Storage Temperature $-40^{\circ}\text{C}\sim 85^{\circ}\text{C}$



LC / SC Specification					
	Mode	Sleeve Type	Housing Type	Housing Color	
LC	SM / APC MM	Zirconia Sleeve	Plastic Metal	Blue Beige Green Aqua Violet	
SC					
	Type	Standards	Other Requirement		
LC	Simplex Duplex Quad	IEC61754-20 IEC61754-4 TIA / EIA-604-10	AA SC type with Flange AA SC type Flangless AR SC type with Flange AR SC type Flangless AR type AA type SC Vertical type		
SC	Simplex Duplex Quad 8 Ports	JIS C 5973 F04 EIA / TIA 604-3A IEC 60874-14-3 GR-326	With Flange Flangless Shutter		

Adapter

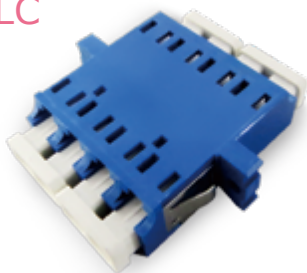
LC / SC



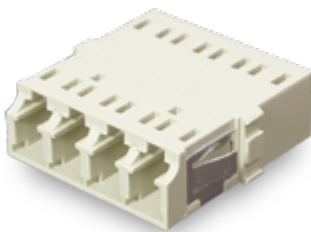
One-piece Adapter

Non-welded design enhances the structure durability, decrease probability of breakdown.

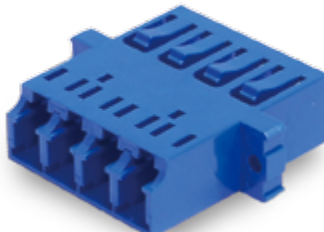
LC



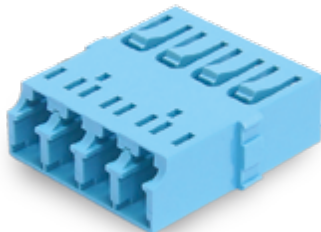
LC Quad metal clip with flange



LC Quad metal clip flangeless



LC Quad with flange



LC Quad flangeless



LC Duplex metal clip with flange



LC Duplex metal clip flangeless



LC Duplex Lucent type

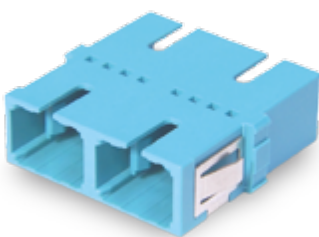


LC Simplex Lucent type

SC



SC Duplex metal clip with flange



SC Duplex metal clip flangeless



SC Duplex Metal



4-PORTS SC Adapter



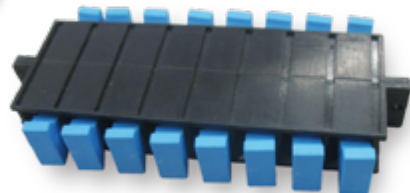
SC Simplex metal clip with flange



SC Simplex metal clip flangeless



SC Shutter



8-PORTS SC Adapter

FC / ST / MTRJ

Features

- Connector Intermateability Standard type FC.
- Metal connector design.
- Metal adapters containing either the precision ceramic or the phosphor bronze alignment sleeves are used to mate FC / ST connectors.

FC / ST Specification				
	Mode	Sleeve Type	Housing Type	
FC	SM / APC MM	Zirconia Sleeve	Metal	
ST				
	Type	Standards	Dust Cap Color	Other Requirement
FC	Simplex	JIS C 5970 F01 TIA / EIA-604-4 IEC61754-13	Green Clear Red	D type Double D type Double Ear D type One-Piece Square Mulit Piece Square
ST	Simplex Duplex	EIA / TIA-604-2 IEC61754-2	Yellow Black	With Flange Flangless



FC
D type



FC double
D type



FC Square
Multipiece



FC Square
Onepiece



ST Duplex



ST Simplex



MTRJ with Flange

MTRJ Specification			
	Type	Housing Type	
MTRJ	Simplex	Plastic	
	Standards	Dust Cap Color	Other Requirement
MTRJ	IEC61754-1 TIA / EIA-604-12 GR326	Black	SC type With Flange Flangless

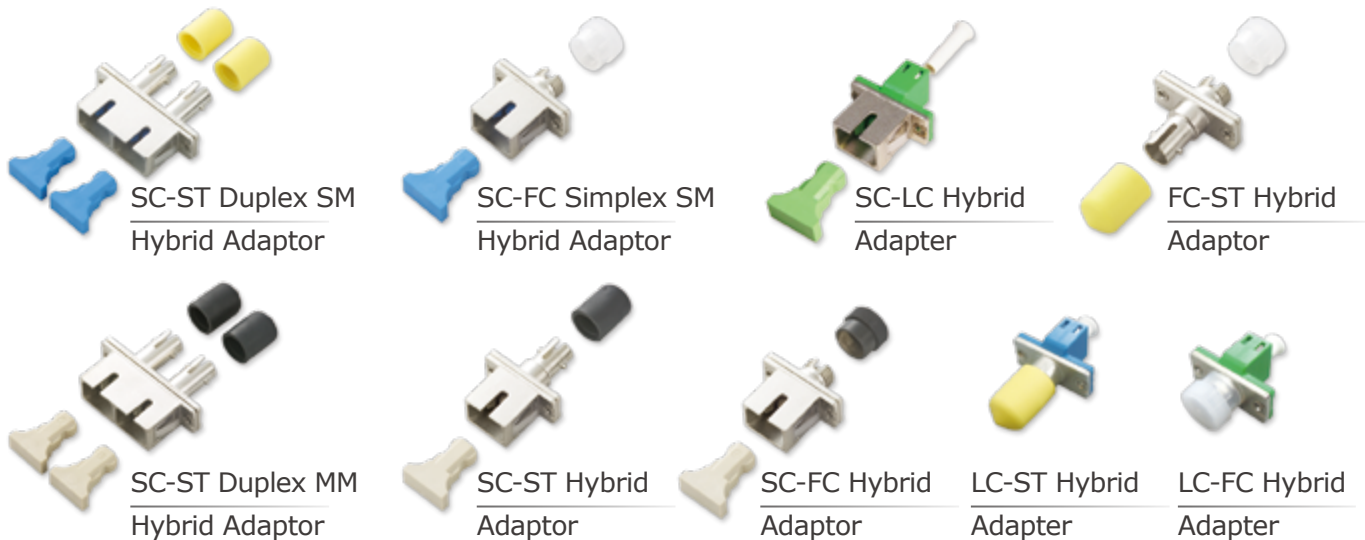
Hybrid

Features

- Economical in both design and termination process.
- Reduce maintenance and create consistent optical performance.
- Stable performance.

Performance

- Insertion Loss ≤ 0.35 dB typical SM



Hybrid Specification					
Connector 1	Connector 2	Sleeve Type	Type	Housing Type	Dust Cap Color
SC FC LC ST	SC FC LC ST	Zirconia Sleeve	Simplex Duplex	Metal Plastic(LC)	Blue Beige Black Clear Green Red Yellow

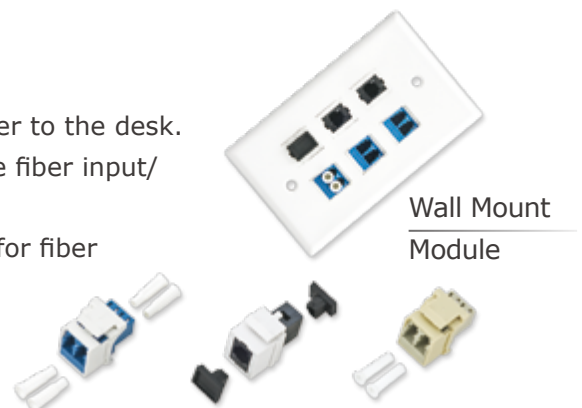
Keystone

Wall mount outlet and keystone carry out the solutions for fiber to the desk. It compliment all types of work area and household to achieve fiber input/output.

The solid quality keeps protection and allows sufficient space for fiber bending.

It makes effective FTTH application.

Various fiber connections: SC, FC, ST, LC, MTRJ, MPO



Grade B

ACON's Optical Communication Division has been a dedicated leader in the optical industry for over a decade by providing low loss fiber optic patch cord assemblies of the highest quality, while still giving our customers a truly excellent cable experience.

ACON's low loss fiber patch cord can reach Insertion Loss ≤ 0.12 dB mean, ≤ 0.25 dB max. over 97% through random mating. Meet level grade B in IEC 61753.

Features

Optical connector

Ferrule end face shape(APC)

- Curvature radius: 5 to 12 mm.
- Offset: less than 50 μm .
- Fiber height: -100 to +100 nm.
- Actual Angle: $8^\circ \pm 0.3^\circ$

Ferrule end face shape(PC)

- Curvature radius: 5 to 25 mm.
- Offset: less than 50 μm .
- Fiber height: -100 to +100 nm

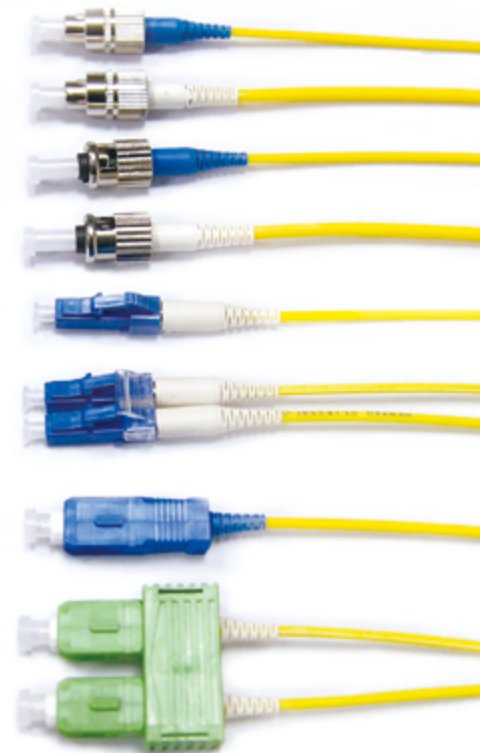
Performance

SMF: Attenuation

= <0.50 dB/km @ 1310nm \pm 20nm (SM)

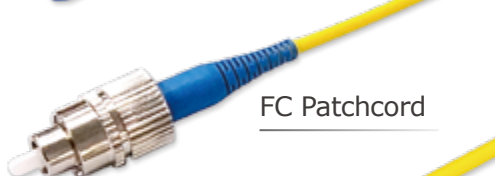
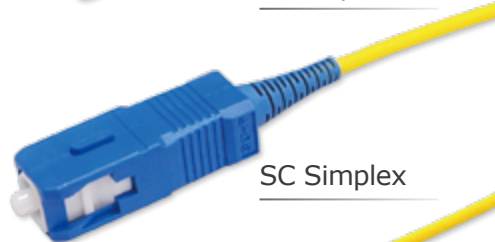
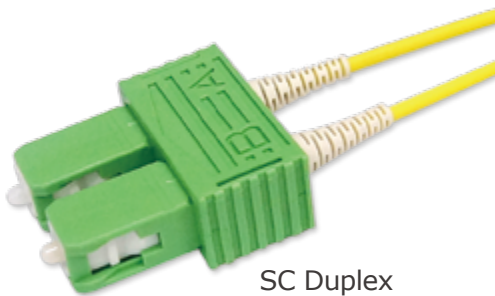
= <0.30 dB/km @ 1550nm \pm 20nm (SM)

- Operating Temperature -20°C~60°C
- Installation Temperature 0°C~50°C
- Storage Temperature -20°C~60°C



Attenuation Grade	IEC 61753	ACON SC / LC / FC / ST patch cord
Grade B	<0.12 dB mean <0.25 dB max.	Low loss PC / APC patch cord
Grade C	<0.25 dB mean <0.50 dB max.	Standard PC / APC patch cord
Grade D	<0.50 dB mean <1.0 dB max.	

Small Form LC / MU / MTRJ SC / FC / ST



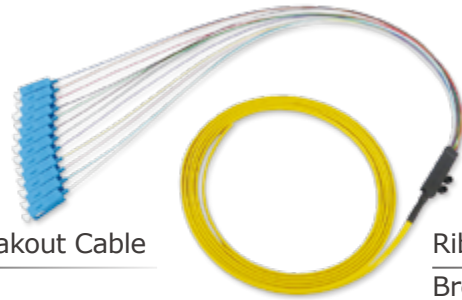
Small Form LC / MU / MTRJ Specification			
	Product	Mode	Jacket Type
LC	Patchcord Pigtail	SM G652D SM G657 A1 SM G657 A2 SM G657 B3 OM1 (62.5/125) OM2 (50/125) OM3 (50/125) OM4 (50/125)	PVC (OFNR) PVC (OFNP) LSZH LSZH(OFNR)
MU			
MTRJ			
	Connector Type	Cable Type	Cable Diameter
LC	LC / PC LC / APC Cone	Simplex Duplex Zipcord Duplex Round	0.9 1.2 1.4 1.8 2.0 2.4 3.0
MTRJ	MTRJ Male MTRJ Female	Duplex Zipcord	1.8 3.0

SC / FC / ST Specification			
	Product	Mode	Jacket Type
SC	Patchcord Pigtail	SM G652D SM G657 A1 SM G657 A2 SM G657 B3 OM1 (62.5/125) OM2 (50/125) OM3 (50/125) OM4 (50/125)	PVC (OFNR) PVC (OFNP) LSZH LSZH(OFNR)
FC			
ST			
	Connector Type	Cable Type	Cable Diameter
SC	SC / PC SC / APC Cone	Simplex Duplex Zipcord Duplex Round	0.9 1.2 1.4
FC	FC / PC FC / APC Cone		1.6 1.8 2.0
ST	ST		2.4 3.0

Multi-Fiber Breakout / Drop cable



Breakout Cable



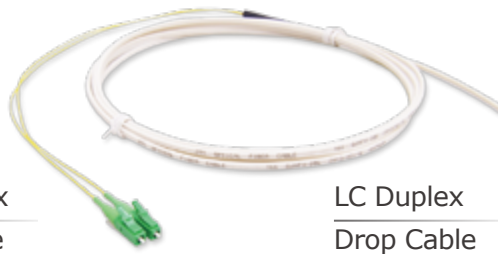
Ribbon type
Breakout Cable

Multi-Fiber Breakout Specification

Product	Mode	Connector Type	Jacket Type	Cable Type			Cable Diameter
Patchcord Pigtail	SM G652D	LC / PC	PVC (OFNR)	4F	Round Ribbon	Tight Buffer	3.0
	SM G657 A1	LC / APC		6F			
	SM G657 A2	SC / PC		8F			
	SM G657 B3	SC / APC		12F			
	OM1 (62.5/125)	FC / PC	PVC (OFNP)	16F		Loose Tube (Easy Stripped)	5.2
	OM2 (50/125)	FC / APC	LSZH	18F			6.5
	OM3 (50/125)	ST		24F			7.0
	OM4 (50/125)	MU	LSZH(OFNR)	36F			8.5
				48F			2.5*5.0
				96F			
				144F Customized			



SC Simplex
Drop Cable



LC Duplex
Drop Cable



ST Simplex
Drop Cable

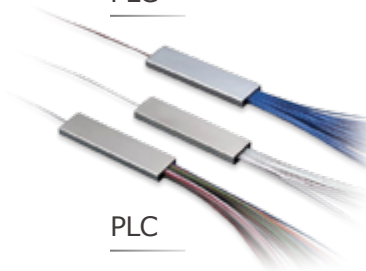
Drop Cable Specification

Product	Mode	Connector Type	Jacket Type	Cable Type		Cable Diameter
Patchcord Pigtail	SM G652D	LC / PC	LSZH	Simplex Duplex	Tight Buffer	2.0 x 1.6
	SM G657 A1					
	SM G657 A2	LC / APC			Loose Tube (Easy Stripped)	2.0 x 3.0 5.3 x 2.0
	SM G657 B3	SC / PC				
	OM1 (62.5/125)	SC / APC				
	OM2 (50/125)	FC / PC				
	OM3 (50/125)	FC / APC				
	OM4 (50/125)					

PLC / Attenuator



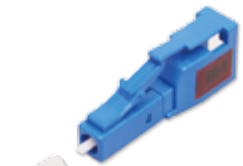
PLC



PLC



PLC



LC Attenuator



SC Attenuator



FC Attenuator

PLC Specification

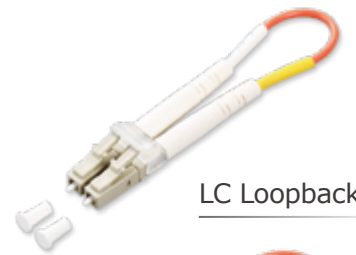
Product		Port Number	Wavelength (mm)	Connector
Standard WDM Single Window Wideband Coupler Dual Window Wideband Standard (MM) WDM (MM) Single Window Wideband Coupler (MM) Dual Window Wideband (MM)		1x2	1310 & 1550	SC / APC
		1x4		
		1x6		
		1x8		SC / PC with white mark
		1x10		
		1x12		SC / APC with white mark
		1x14		
		1x16		1550
		1x18		
		1x20		850
		1x22		
		1x24		LC / APC
		1x32		
		2x32		FC / PC
		4x4		
		8x8		
PLC Ratio	Fiber (mm)		Package	Steel Tube
AS Demand	0.9 2.0 Bare		Steel Tube ABS Box	50mm Box

Attenuator Specification

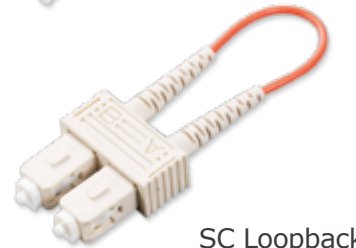
Connector Type	Attenuation Values (dB)		Wavelength (nm)
LC / PC LC / APC SC / PC SC / APC FC / PC FC / APC ST MU	0	10	1310/1550nm(SM)
	1	11	
	2	12	
	3	13	
	4	14	
	5	15	
	6	16	850/1300nm(MM)
	7	17	
	8	18	
	9	19	
		20	

Loopback

Loopback Specification		
Mode	Connector type	DB Type
SM G657 A2	LC / PC Duplex	0dB SM 1dB 2dB 0dB MM
SM G657 B3	SC / PC Duplex	
OM1 (62.5/125)	MTRJ Female	
OM2 (50/125)	MPO	
OM3 (50/125)	MTP	
OM4 (50/125)		
Shell Color	Jacket Type	Diameter (mm)
Black	PVC (OFNR)	0.25
Blue(LC)	PVC (OFNP)	0.6
Beige(LC)		0.9
Aqua(LC)	LSZH	2.0
	LSZH (OFNR)	3.0



LC Loopback



SC Loopback



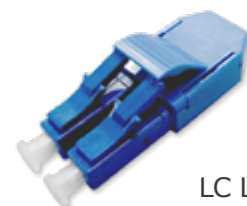
MPO Loopback



MPO Loopback
with Shell



SC Loopback
with Shell



LC Loopback
with Shell

FTTA

Fiber to the Antenna - LC Hybrid Patchcord

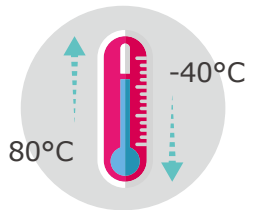
The ACON new FTTA Hybrid Patchcord, combined with copper wire and optical fiber in an uni cable, which supports power and data transmission at the same time. It's waterproof and flame resistant. It also meets IEC 60332-1 and RoHS.

ACON, the experienced supports to FTTA demands.

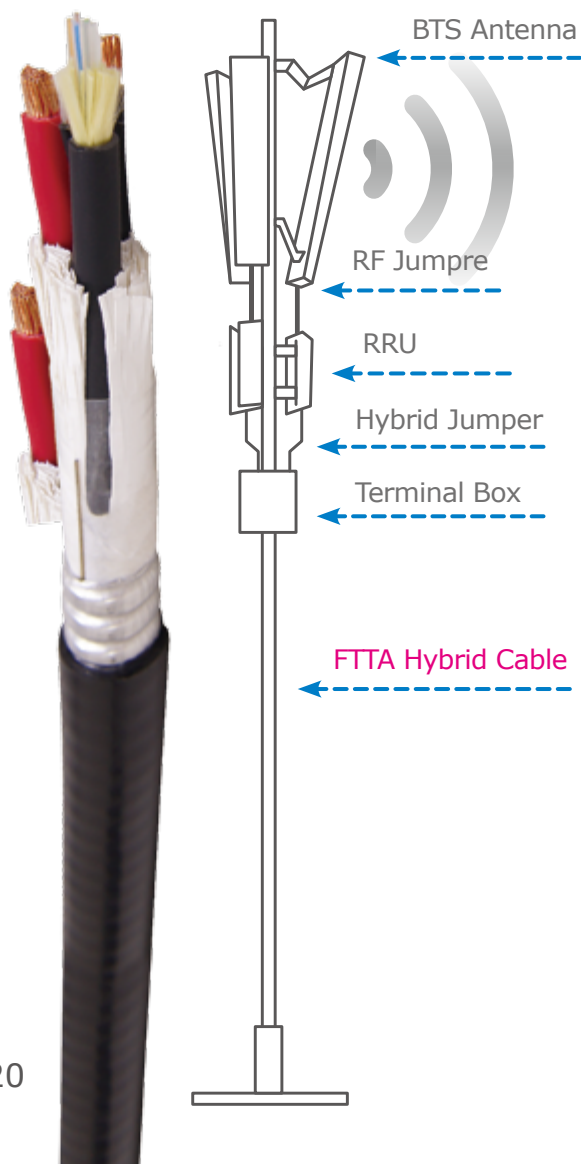
- Three claddings fully protect the fiber.
- Wild range of operating temperature.
- Hybrid cable construction, makes more efficiency and high quality operation.
- Braid sleeve and pulling-eye option, more convenient and protective.



Water-proof



Wild range of operating temperature



FTTA

To keep pace with the ever-growing demand for bandwidth in the 4G LTE era, Acon's FTTA solution provides customers with high-quality broadband capabilities while eliminating the need for building expensive infrastructures.

Features

- GR-326-Core & RoHS2 compliant
- Smarter termination process
- Compact pull-proof design
- High precision alignment
- Reducing maintenance and creating consistent optical performance
- Pulling eye addition enhances protection
- Ruggedized, water-proof connector
- Cable type for choice



FTTA Cable with Mesh Cover



FTTA Cable with angled boot



FTTA Cable with Pulling-eye+PVC tube



Armoured cable

FTTA Specification					
Product information		Protections for Connector		Cable	
Connector		Bubble Bag PE Bag Pulling-eye Corrugated PVC tube Mesh Cover PG Connector	Main Cable Diameter (mm)		
Normal	Water proof		7.0	4.8	
SC	IP-SC		Core		
			2		
			Sub Cable Diameter (mm)		
			2.0	0.9	
LC	IP-LC		Mode		
			SM G657A2 OM2(50/125) Customized	SM G657A2 Customized	
FC	IP-LC				
LC 90°	IP-MPO		Cable Material		
			LSZH		
			Branch		
		Normal	Armored		

MPO / MTP®

With MPO/MTP® cable assembly capability, Acon offers all kinds of customized design and ODM/OEM manufacturing services for years in market, including 8C/12C/16C/24C/32C/48C multi-mode and single-mode products of Jumpers, Fanout/Breakout cables, short cables with OFNP, OFNR, LSZH materials for Datacom and Telecom applications.

MPO
3.0mm MM

MPO
3.0mm SM

MPO
3.0mm MTP Elite

MPO
3.0mm Short Boot

MPO
Bare Ribbon

MPO
Ribbon Cable

Patchcord

- 12F/24F available to support 40G/100G Ethernet interfaces
- Single-mode angled polishing makes precise alignment
- UsConec MTP® Elite option works with better performance

Hydra

- For installing in the cassette module to apply plug and play system
- To provide transition of MTP®/MPO and standard interface, like LC, SC and ST
- Tested assemblies are made according to IEC/TIA standards

Harness

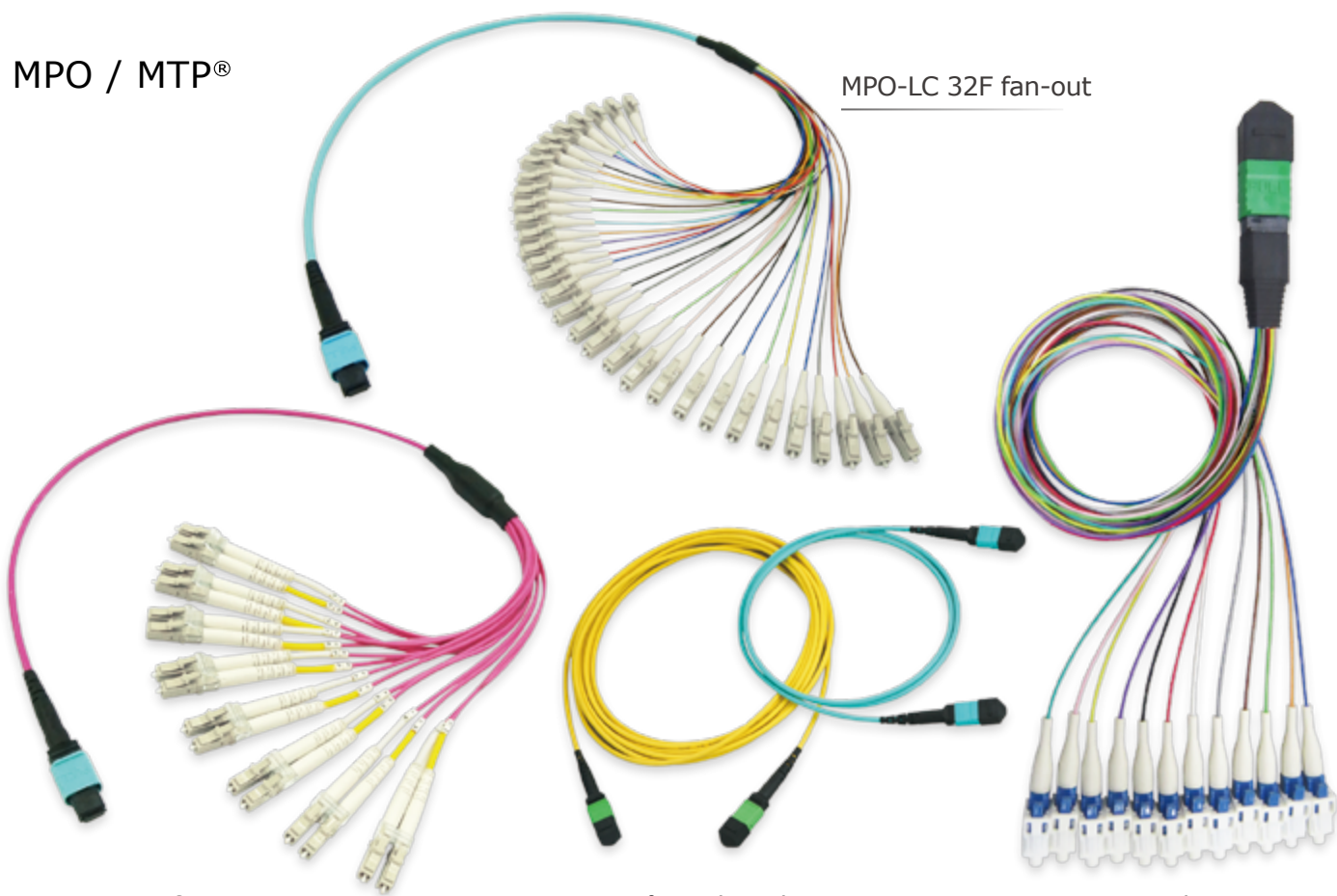
- For transition from trunk backbone to fiber rack system
- 2mm or 3mm cable furcation in customized length
- Round cable using makes easy positioning

Characteristics

Description	Specification	Conditions
Insertion Loss	SM : ≤ 0.75 dB (MPO) MM : ≤ 0.6 dB (MPO) SM : ≤ 0.5 dB (MTP®) MM : ≤ 0.5 dB (MTP®) SM : ≤ 0.35 dB (MTP® Elite) MM : ≤ 0.35 dB (MTP® Elite)	SM $\lambda = 1310/1550$ mm MM $\lambda = 1300/850$ mm
Return Loss	SM : ≥ 60 dB	SM $\lambda = 1310/1550$ mm

MPO / MTP®

MPO-LC 32F fan-out



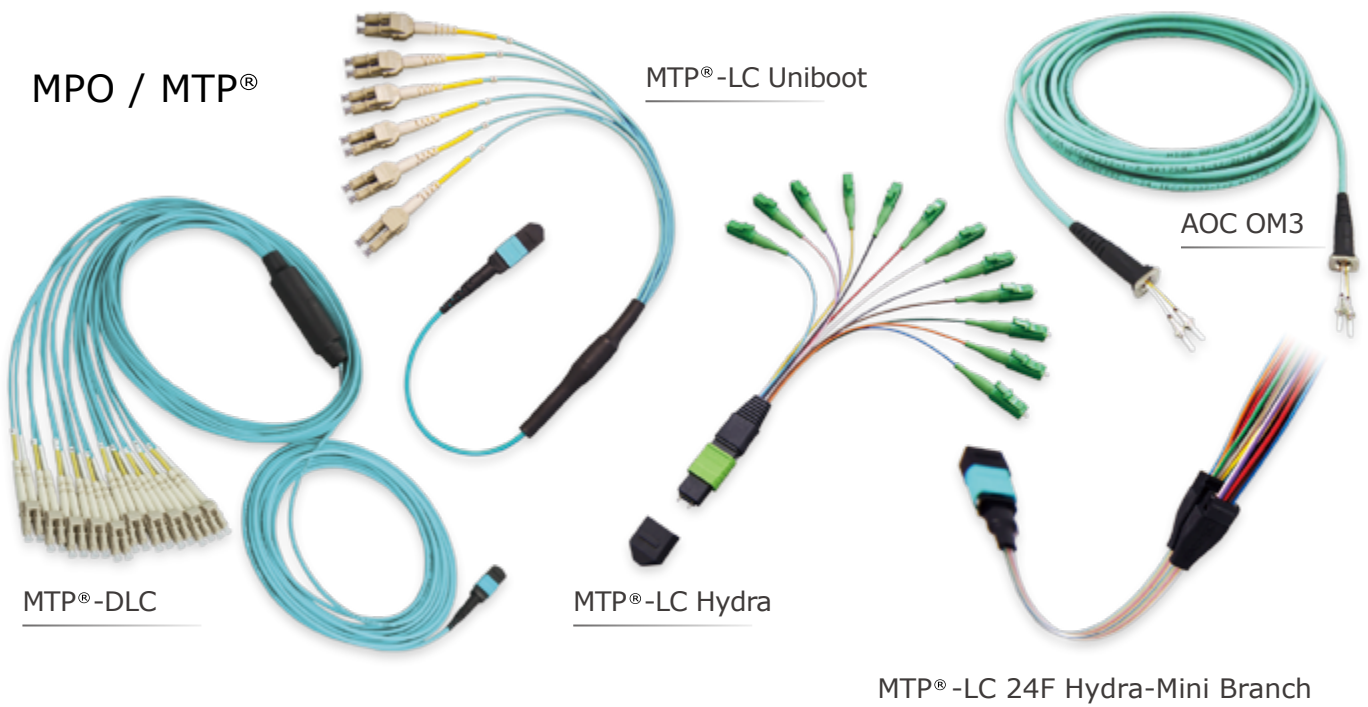
MPO-LC 16F fan-out

MPO MTP® Patchcord

MPO-LC Hydra

MPO Specification					
	Connector Type	Mode	Cable Type	Jacket Type	Cable Diameter (mm)
MPO	MPO male	SM G652D	8F	PVC (OFNR)	Bare Ribbon
		SM G657 A1			
		SM G657 A2	12F	PVC (OFNP)	2.5 x 5.0
		SM G657 B3	16F		3.0
	MPO female	OM1 (62.5/125)	24F	LSZH	3.0 (Short Boot)
		OM2 (50/125)	32F	LSZH(OFNR)	3.5 (Short Boot)
		OM3 (50/125)			
		OM4 (50/125)			

MPO / MTP® Solution



MPO Specification					
	Connector Type	Mode	Cable Type	Jacket Type	Cable Diameter (mm)
MTP®	MTP® male MTP® female MTP® male Elite MTP® female Elite	SM G652D	8F 12F 16F 24F 32F	PVC (OFNR) PVC (OFNP) LSZH LSZH(OFNR)	Bare Ribbon 2.5 x 5.0 3.0 3.0 (Short Boot) 3.5 (Short Boot)
		SM G657 A1			
		SM G657 A2			
		SM G657 B3			
		OM1 (62.5/125)			
		OM2 (50/125)			
		OM3 (50/125)			
		OM4 (50/125)			
AOC Specification					
Product	Connector Type	Cable Type	Mode	Jacket Type	Cable Diameter
Patchcord Pigtail	LC / PC LC / APC	Duplex Zipcord	SM G657 A2 SM G657 B3	PVC (OFNR)	2.0 3.0
Patchcord	MT / 8F MT / 12F MT / 24F MT / 48F (4 x 12)	Ribbon Round	OM1 (62.5/125)	PVC (OFNP)	
			OM2 (50/125)	LSZH	
			OM3 (50/125)	LSZH(OFNR)	
			OM4 (50/125)		

MPO / MTP®

Adapter



MPO
Loopback with shell



MTP®
Loopback



BOSA Simplex SM

Adapter / BOSA		Specification				
	Adapter type	Flange type		Key Orientation	Housing Color	
Adapter	Normal Simplex SC Footprint Duplex SC Footprint	With Flange Flangless		Aligned Opposed	Black Aqua Blue	
	Sleeve Type	Type	Housing Type	Housing Color	Flange material	Other Requirement
BOSA	Zirconia	Simplex	Plastic	Blue Beige Green Aqua Violet	SUS304	Flangless

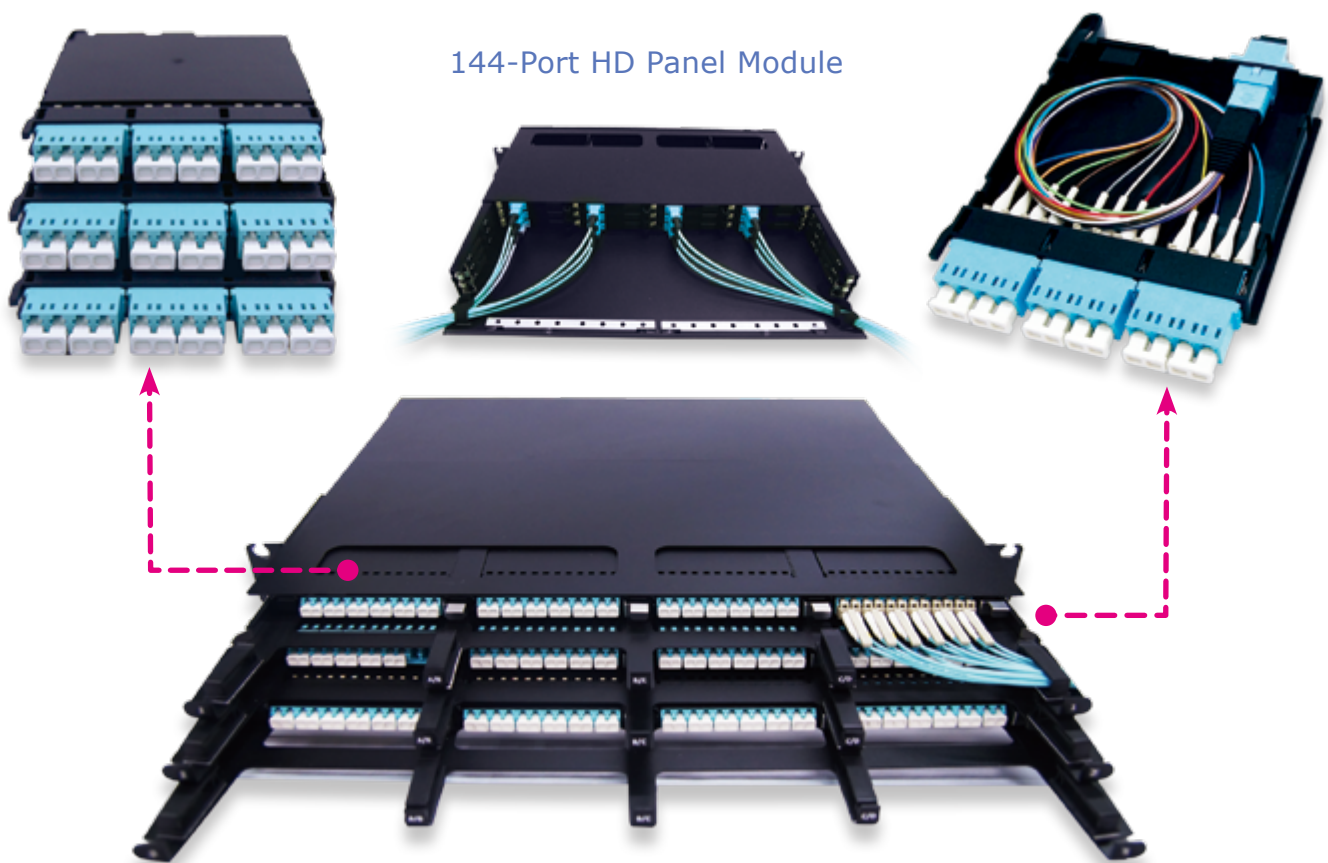
Data Center Solution

ACON delivers the perfect combination of fiber optic products, services and technology for data centers

The data center is the heart of your operation. Whether it occupies one room, one or more floors, or an entire building, ACON can supply all of the components for an end-to-end Tier 1 to Tier 4 operation.

ACON has the expertise to maximize the performance and scalability of your data center applications. As the technology leader in fiber optic cabling and components, ACON can help deliver modularity, flexibility and customization in design, density and scalability from optical fiber and cable to the hardware and connectivity in your data center.

With vertically integrated operations, ACON's qualified, capable engineers and technicians can supply every piece of the puzzle, delivering control over quality, reliability and performance.



144-Port HD Panel Module

Features

- A three-layer design allows for easy access of all 12 cassette modules.
- Small 1RU standard rack size provides maximum density.
- Each cassette is removable and can be easily customized for specific connectivity applications.
- Cable management is simple and is designed for easy access and recognition.
- Removable back cover for open access to trunk cables.

Data Center Solution

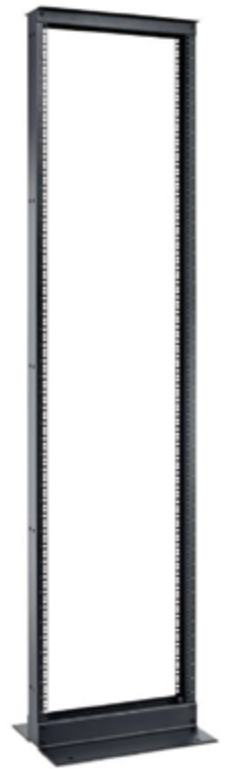
Open Rack Systems

AI 2-Post Standard Rack

High quality, cost-effective storage solution for patch panels. The small footprint makes Two-post Rack the best choice in many telecommunications and equipment rooms, especially where floor space is limited.

- Provide 3" and 6" upright mounting channel
- Load rating: 800Kg
- EIA-310-D Compliant
- Main body and mounting rails are made of high strength AL6063-T5
- Facilitate installing and supporting by fixed mounting rails with RMU markings
- Saving space and easy maintenance
- With additional variety of cable managers, cables can be easy managed for moves, adds and changes

AI 2-Post Standard Rack		Specfication		
Product Name	W (mm)	D (mm)	H (mm)	U (RMU)
AI-4100S-X	516	76	1956	42U
AI-4101S-X	516	152	1956	42U
AI-4500S-X	516	76	2133	42U
AI-4501S-X	516	152	2133	42U



AI 2-Post
Standard Rack

QR 4-Post Server Frame

Four-post Rack offer the strength and stability of a cabinet in an open architecture and are available in a variety of styles.

- Offering the strength and stability of a cabinet , but in an open mounting system
- Load rating: 1000Kg
- EIA-310-D Compliant
- Main body and mounting rails are made of high strength AL6063-T5
- Facilitate installing and supporting by fixed mounting rails with RMU markings
- Saving space and easy maintenance
- With additional variety of cable managers, cables can be easy managed for moves, adds and changes

QR 4-Post Server Frame		Specfication		
Product Name	W (mm)	D (mm)	H (mm)	U (RMU)
QR-4173S-X	530	737	1956	41U
QR-4573S-X	530	737	1956	45U



QR 4-Post
Server Frame

Data Center Solution

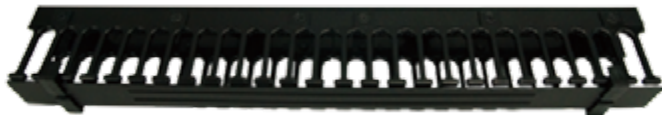
Cable Management Solution for Rack System

Horizontal Cable Manager

Universal Horizontal Cable Manager creates an highly functional horizontal pathway for patchcords and multimedia applications using coax, copper and fiber optic cables. After routing the cables or cords, simply snap on the cover for a clean, professional appearance.

- Unique plastic finger design to decrease potential cable damage
- Snap-on covers are included and open up or down to access cables

Horizontal Cable Manager Specification				
Product Name	W (mm)	D (mm)	H (mm)	U (RMU)
CM-H0111S-X	483	70	44	1U
CM-H0121S-X	483	110	44	1U



Horizontal Cable Manager CM-H0121S-X



Horizontal Cable Manager CM-H0111S-X

Vertical Cable Manager

An economical cable management solution which create vertical and horizontal pathways that store and organize premise cables and patchcords on two and four-post Rack Systems.

- Unique plastic finger design, providing frequent 1U spacing of the cable guides that aligns precisely with the cabinet spacing
- Snap-on covers are included and swing open to the right or left to provide easy access and protect cables when closed
- Available for AI or QR series

Vertical Cable Manager Specification				
Product Name	W (mm)	D (mm)	H (mm)	U (RMU)
CM-V4151S-X	100	349	1945	41U
CM-V4152S-X	165	349	1945	41U
CM-V4151D-X	100	387	1945	41U
CM-V4152D-X	165	387	1945	41U
CM-V4551S-X	100	349	2125	45U
CM-V4552S-X	165	349	2125	45U
CM-V4551D-X	100	387	2125	45U
CM-V4552D-X	165	387	2125	45U



Vertical Cable Manager

Data Center Solution

Cable Distribution Spools

Cable Distribution Spools provide slack management and strain relief for patch cords and jumper cables inside Vertical Cable Managers.

- Attaches to the mid panel with included hardware
- Spools are 50 mm in diameter, 100 mm L and 87 mm H (height can be customized)
- Made from black plastic, the flame-retarding can reach UL94V-0 standard



Cable Distribution Spools



Velcro Kit

Velcro Kit

- Used on 9.5mm x 9.5mm square hole
- Tool free



432 ports

Cabling Enclosure / Frame & Panel & Cassette

- Support 19" EIA standard rack enclosure
- Flexibly support diverse cabling solutions
- Perfect fit in data center with better cable management solution
- Various pre-terminated cable modules allows easy cabling access
- Customize design accepted, Cassette, Patch Panel



144 ports



120 ports



96 ports



72 ports



36 ports



Data Center Solution

Frame & Panel & Cassette



Frame 5H



Frame 4H



Frame 3H

Cassette 24LC



Cassette 8MPO



Cassette 24LC



Panel 10827-BN



Panel 7237-BN



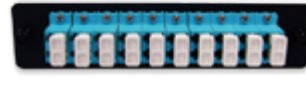
Panel 12MPO



Panel 12ST



Panel 12LC



Panel 20LC

Frame & Panel & Cassette

Series Type	Hole Pitch	Numbers of Frame Hole	Material	Frame Hole Dimension	Panel Type	Front Adapter Type	Rear Adapter Type	Numbers of Adapter	Fibers Number with Adapter	Dimension (mm)
Frame 7237-5H	82mm	5	Steel	72*37mm	-	-	-	-	-	435*44
Frame 7237-4H	82mm	4	Steel	72*37mm	-	-	-	-	-	435*44
Panel BN	82mm	-	Steel	-	Blind	-	-	-	-	90*38.5
Cassette 7237-24LC	82mm	-	Steel	-	SC Duplex foot print	LC Quad	MPO	6/2	24	71.5*36.5*106.5
Cassette 7237-12SC	82mm	-	Steel	-	SC Duplex foot print	SC Duplex	MPO	6/2	12	71.5*36.5*106.6
Cassette 7237-8MPO	82mm	-	Steel	-	SC Simplex foot print	MPO(12)	MPO	8/2	96	71.5*36.5*106.7
Series Type	Hole Pitch	Numbers of Frame Hole	Material	Frame Hole Dimension	Panel Type	Front Adapter Type	Rear Adapter Type	Numbers of Adapter	Fibers Number with Adapter	Dimension (mm)
Frame 10827-3H	120mm	3	Steel	108*27mm	-	-	-	-	-	435*44
Panel 10827-BN	120mm	-	Steel	-	Blind	-	-	-	-	127*29
Cassette 10827-24LC	120mm	-	Steel	-	SC Duplex foot print	LC Quad	MPO	6/2	24	108*27*26
Panel 10827-12LC	120mm	-	Steel	-	SC Simplex foot print	LC Duplex	N/A	6	12	127*29
Panel 10827-20LC	120mm	-	Steel	-	SC Simplex foot print	LC Duplex	N/A	10	20	127*29
Panel 10827-12MPO	120mm	-	Steel	-	SC Duplex foot print	MPO Duplex	N/A	6	12*12	127*29
Panel 10827-12ST	120mm	-	Steel	-	ST	ST	N/A	12	12	127*29

Cabling Enclosure



432 ports



144 ports



120 ports



96 ports



72 ports



36 ports

Cabling Enclosure Specification

Series Type	Rack Unit	Enclosure or Frame	Layers or Drawer	Cassette(C) or Adapter Plate(P)	Cassette Type	Front Adapter Type	Rear Adapter Type	Numbers of Adapter	Fibers Number with Adapter	Dimension (mm)	Weight
432 ports	3.5RU	Frame	N/A	18C	Metal (blade)	LC Duplex	MPO	216/36	432	435*100*162.5	8.5KG
144 ports	1RU	Enclosure	3 Layers	12C	Metal	LC Quad	MPO	72/12	144	435*375*43.5	7.8KG
	1RU	Enclosure	3 Layers	12C	Plastic	LC Quad	MPO	36/12	144	435*375*43.5	5.8KG
	1RU	Enclosure	3 Layers	12C	Plastic	SC Duplex	MPO	36/12	72	435*375*43.5	5.65KG
	1RU	Enclosure	3 Layers	12C	Plastic	MPO(12F)	N/A	72	864	435*375*43.5	5.5KG
	1RU	Enclosure	3 Layers	12C	Plastic	MPO(24F)	N/A	72	1728	435*375*43.5	5.5KG
120 ports	1RU	Enclosure	Drawer	5C	Metal / 7237	LC Quad	MPO	30/10	120	435*365*43.5	4.1KG
	1RU	Frame	N/A	5C	Metal / 7237	LC Quad	MPO	30/10	120	435*365*43.5	1.8KG
96 ports	1RU	Enclosure	Drawer	4C	Metal / 7237	LC Quad	MPO	24/8	96	435*365*43.5	3.75KG
	1RU	Frame	N/A	4C	Metal / 7237	LC Quad	MPO	24/8	96	435*365*43.5	1.5KG
72 ports	1RU	Enclosure	Drawer	3C	Metal / 10827	LC Quad	MPO	18/6	72	435*365*43.5	4KG
	1RU	Frame	N/A	3C	Metal / 10827	LC Quad	MPO	18/6	72	435*365*43.5	1.8KG
36 ports	1RU	Enclosure	Drawer	3P	Metal / 10827	LC Duplex	N/A	18	36	435*365*43.5	4KG
	1RU	Frame	N/A	3P	Metal / 10827	LC Duplex	N/A	18	36	435*365*43.5	1.8KG

Accessories

Fiber Optic Cleaner

Options

- 250 Cleaner: Fiber optic cleaner for SC, FC, ST connector.
- 125 Cleaner: Fiber optic cleaner for LC, MU connector
- CLE-MPO-T Cleaner: Fiber optic cleaner for MPO



250 Cleaner



125 Cleaner



CLE-MPO-T Cleaner

Crimping tool

Manually crimp the crimp eyelet for fixed kevlar and jacket

Options

- SC
- LC



Crimping tool

Fiber Optic Stripper

Options

- Jacket stripper: Strip and cut wire sizes between 20-10 AWG (0.8-2.6 mm)
- Fiber stripper: Strip 250um Coating to 125um Cladding



Kevlar cutter

Fiber Optic Hot Stripping machine

To strip 250um/0.9mm fiber and 2.0/3.0mm tight buffered cable

Kevlar cutter

For cutting Kevlar of fiber optic cable



Fiber Optic Stripper

Alcohol wipes

Clean fiber's surface to make sure the efficacy

Fiber Cleaver

Cut fiber to needed length, necessary for site construction

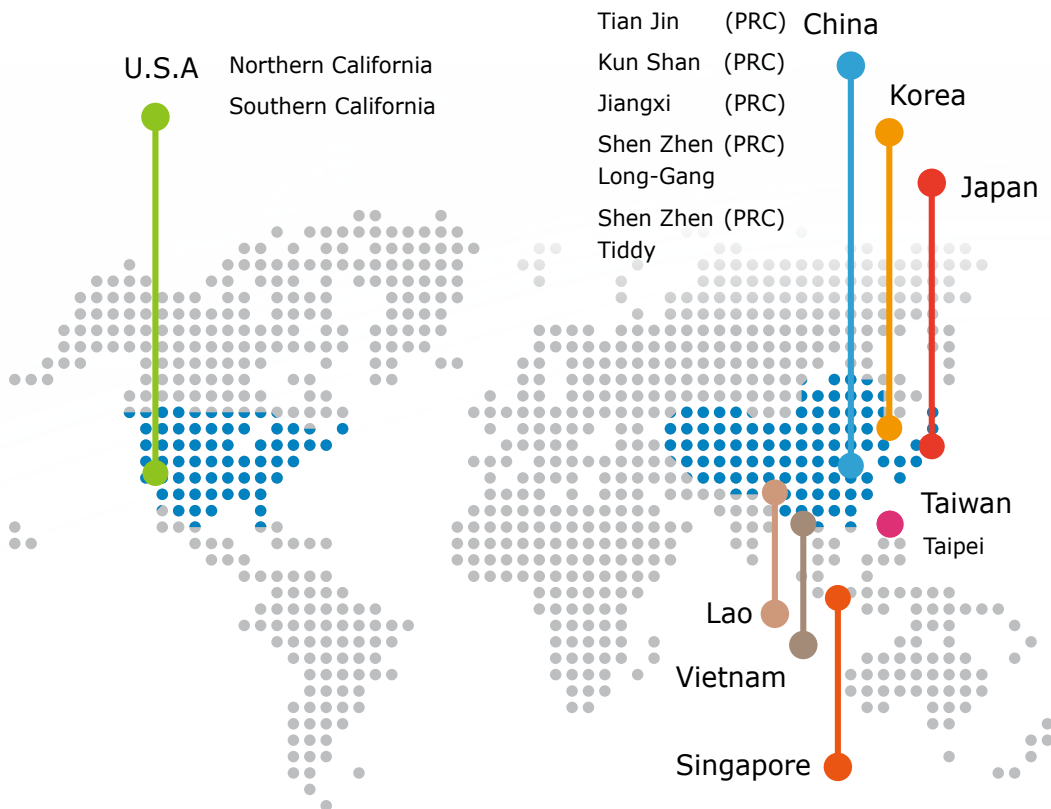
Curing plate

To solidify 353ND insides ferrules. Suitable to different type of connectors, change the heating block to save cost



Fiber Cleaver

Operation Location



China Plants

Advanced-Connectek Ltd.
(Shen-Zhen)

No 2, Lanjing Mid Rd.,
Ping Shan new District,
Shenzhen, Guangdong, China

TEL: +86-755-3382-8888

FAX: +86-755-8463-0416
Ext.8996

E-Mail: sz@acon.com

Tiddy Company Ltd.
(Shen-Zhen)

The Third Industry Estate,
Bi Tou village, Song Gang
Town, Bao An District,
Shen-Zhen, Guangdong, China

TEL: +86-755-2713-0065

FAX: +86-755-2713-0069

E-Mail: sales.td@acon.com

Headquarter

Advanced Connectek Inc.

No.2, Aly.9, Ln.45, Baoxing
Rd., Xindian Dist.,
New Taipei City 231, Taiwan.

TEL: +886-2-2917-5598

FAX: +886-2-2915-0052

E-Mail: info@acon.com

Oversea Office Region

Advanced-Connectek U.S.A. Inc.
(Southern California)

3002 Dow Ave, Suite 506
Tustin California 92780 U.S.A.

TEL: +1-714-573-1920

FAX: +1-714-573-1924

E-Mail: sharon@acon.com

SABRE TECHNOLOGIES KOREA

Suite 602 Seohyeon Howvie
272-1, Seohyeon-Dong
Bundang-Gu Seongnam-Shi,
Gyeonggi-Do 463-824 Korea

TEL: +82-31-706-6880

FAX: +82-31-706-6883

E-Mail: jason@sabrekorea.com

Advanced-Connectek Ltd.
(Kun-Shan)

No.888, Hua-Yuan Road,
Zhang-Pu Town, Kun-Shan,
Jiang-Su., China

TEL: +86-512-5744-6168

FAX: +86-512-5744-9168

E-Mail: sale.ks@acon.com

Optical Communication BU.

TEL: +886-2-2917-5598

FAX: +886-2-2917-0410

E-Mail: ocbu@acon.com

Advanced-Connectek U.S.A. Inc.
(Northern California)

1250 Ames Avenue, suite 200
Milpitas, California 95035

TEL: +1-714-573-1920

FAX: +1-714-573-1924

E-Mail: charles.wang@acon.com

AMPEC ELECTRONICS PTE LTD

7030 ANG MO KIO AVENUE 5,
#03-18 NORTHSTAR@AMK,
SINGAPORE 569880

TEL: (065)6741 1280

FAX: (065)6741 9775

E-Mail: jim@ampec.com.sg

Advanced-Connectek Ltd.
(Tian-Jin)

No.32 Tai-xiang Road TEDA
TianJin, China

TEL: +86-22-6620-3936

FAX: +86-22-6620-3938

E-Mail: sales.tj@acon.com

Wireless BU.

Rm. F, B2, No.207-1, Sec. 3,
Beixin Rd., Xindian Dist.,
New Taipei City 231, Taiwan.

TEL: +886-2-8913-1939

FAX: +886-2-8913-2538

E-Mail: wbu@acon.com

Advanced-Connectek JAPAN Inc.
(Shinyokohama)

222-0033 KlingelInberg Building,
5F, 1-13-12 Shinyokohama,
Kohoku-ku, Yokohama City
Kanagawa-ken, Japan

TEL: +81-45-478-4380

FAX: +81-45-478-4381

E-Mail: ben@aconjapan.com

ACON-GLOBAL VINA CO.,LTD.
(VIETNAM)

TRUNG TRAC,VAN LAM,
HUNG YEN,VIET NAM

TEL: +84-3213-788-300

FAX: +84-3213-788-302

E-Mail: dat@acon-global.com

Advanced-Connectek Ltd.
(Jiangxi)

G206, Hi-tech Industrial Park ,
Yuehu District,Yingtian City,
Jiangxi

TEL: +86-701-6295588#7068

E-Mail: kevin.lien@acon.com



TEL : +886-2-2917-5598

FAX : +886-2-2917-0410

E Mail : ocbu@acon.com

www.acon.com

No.2,Aly.9,Ln.45,Baoxing Rd., Xindian Dist.,
New Taipei City 231, Taiwan.