



# QUICK REFERENCE GUIDE





## FOCUS ON SPECIFICATION

XtraLight's commitment to developing specification grade solutions goes beyond performance. All products are controls ready or enabled, leverage leading technologies, and include features and platforms that can be adapted to any project.



## ON-SITE PRODUCT TESTING

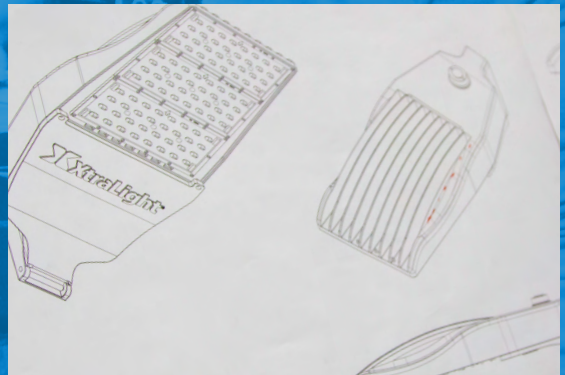
American Testing and Assessment Laboratories, a premier NVLAP® accredited facility, is on-site to perform 44 individual types of testing. This assures that our products perform to the highest standards.

[www.ata-labs.com](http://www.ata-labs.com)



## ADVANCED MANUFACTURING

XtraLight's advanced manufacturing facility produces premium luminaires with best-in-class components to ensure performance. With the shortest lead time in the industry, we typically deliver within 7-15 business days.



## DESIGN & ENGINEERING EXPERTISE

As the most responsive manufacturer in the industry, XtraLight offers rapid prototyping capabilities that quickly converts ideas or unique project requirements into tangible products in as little as a few hours. Our team of designers and engineers oversees each stage of product development as we invest in the latest LED technology and innovations.



# CONTENTS

---



## **OUTDOOR SOLUTIONS**

AREA/SITE, WALL MOUNT, FLOOD,  
STREET/ROADWAY, CANOPY,  
PARKING GARAGE

02

## **SPECIALTY APPLICATIONS**

HAZARDOUS LOCATION,  
HORTICULTURE LIGHTS,  
WILDLIFE LIGHTING, RETROFIT

14



## **INDOOR SOLUTIONS**

TUNABLE WHITE, RECESSED,  
SURFACE MOUNT,  
LINEAR SUSPENDED, COVE, ,  
RETROFIT KITS

19



## **INDUSTRIAL SOLUTIONS**

HIGH BAY, RECESSED LOW BAY,  
VAPOR TIGHT ENCLOSURES,  
WASH DOWN/FOOD PROCESSING

29

Visit our website to download spec sheets  
and see our complete product selection.









OUTDOOR  
SOLUTIONS

---





**LARGE**

**MEDIUM**

**SMALL**

#### APPROVALS

- ETL listed. Complies with UL1598 and CSA C22.2#250.0.0:2008
- Suitable for wet locations.
- 3G Vibration Rated for Bridge/Overpass Applications per ANSI C136.31-2010, Test Level 2.
- Select models DLC Qualified. For a complete list of DLC Qualified products visit: [www.xtralight.com/dlc](http://www.xtralight.com/dlc) or [www.designlights.org/qpl](http://www.designlights.org/qpl)

#### PRODUCT PERFORMANCE

MODEL	CCT	WATTS	LUMENS	EFFICACY
VNT-S 025	5000K	27.3	4085	149.8
VNT-S 052	5000K	52.7	7605	144.3
VNT-S 072	5000K	77.4	10775	139.2
VNT-S 100	5000K	109.1	14735	135.0
VNT-M 100	5000K	103.8	15243	146.9
VNT-M 144	5000K	153.5	21531	140.3
VNT-M 200	5000K	215.9	28469	131.8
VNT-L 231	5000K	243.5	34417	141.3
VNT-L 300	5000K	323.5	43512	134.5

#### FEATURES

- Zero uplight (U0) is night sky friendly, reduces wasted light.
- Outstanding photometric performance results in sites with excellent uniformity, optimal pole spacing and lower power density.
- Optics are completely sealed against moisture and environmental contaminants (IP66).
- Low profile architectural design offers a contemporary appearance with excellent light output.
- Controls ready luminaire for independent operation or remote management.

#### CONSTRUCTION

- Housing: One-piece die-cast aluminum has integral heat sink fins to optimize thermal management through conductive and convective cooling.
- LED driver is mounted in direct contact with the casting to promote low operating temperature and long life.
- Housing and door are protected with a thermoset TGIC-polyester powder coat finish. Powder coat finish available in bronze, white or custom colors (consult factory).

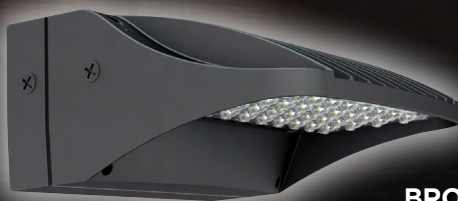
#### MOUNTING

- Integral arm with key hole slot facilitates quick and easy installation in the field.
- Nut plate eliminates loose hardware in the pole and reduces installation labor.



# Viento

## WALL PACK



**BRONZE**



**WHITE**

### APPROVALS

- ETL listed. Complies with UL1598 and CSA C22.2#250.0.0:2008
- Suitable for wet locations.
- Select models DLC Qualified. For a complete list of DLC Qualified products visit: [www.xtralight.com/dlc](http://www.xtralight.com/dlc) or [www.designlights.org/qpl](http://www.designlights.org/qpl)

### PRODUCT PERFORMANCE

MODEL	CCT	WATTS	LUMENS	EFFICACY
3500L	4000K	27.6	3798	137.7
5500L	4000K	55.26	6490	117.4
8000L	4000K	79.0	9166	116.1
11000L	4000K	92.72	10071	108.6

### FEATURES

- Uniform light distribution, ideal for building facades, entry ways, sidewalks and general security or accent lighting.
- LED provides a significant energy savings over HID.
- Custom colors are available (consult factory).
- Designed for ease of installation.
- Zero uplight (U0) is night sky friendly, reduces wasted light.
- IP66 Optics and Housing.

### CONSTRUCTION

- Housing: Two-piece die-cast aluminum has integral heat sink fins to optimize thermal management through conductive and convective cooling.
- Housing and back box are protected with a thermoset TGIC-polyester powder coat finish. Powder coat finish available in bronze, white or custom colors (consult factory).
- LED driver is mounted in direct contact with the casting to promote low operating temperature and long life.
- Silicone gasket is included to prevent leakage and provide weather-tight protection.
- All fasteners are stainless steel.
- Emergency battery backup options and passive infrared photo/motion sensor options are available.





# Viento

## FLOOD



LARGE



SMALL

### APPROVALS

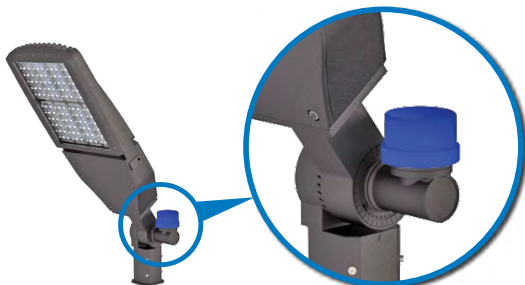
- ETL Listed. Complies with UL1598 and CSA C22.2#250.0.0:2008
- Suitable for wet locations.

### PRODUCT PERFORMANCE

MODEL	CCT	LUMENS	EFFICACY
VNFS 050, 075 & 100	5000K	OVER 12700	UP TO 122.6
VNFL 100, 150, 200, 240 & 300 (N/H)	4000K	OVER 37200	UP TO 146.4

Consult Viento Flood spec sheets for additional photometric testing.

— NEMA TWIST-LOCK ALWAYS —  
**ORIENTED PRECISELY**  
 — INDEPENDENT OF LUMINAIRE —



### FEATURES

- The Viento Flood easily combines superior photometric performance, advanced thermal management and an appealing architectural design.
- IP66 optics and housing.

### CONSTRUCTION

- Housing: One-piece die-cast aluminum has integral heat sink fins to optimize thermal management through conductive and convective cooling.
- LED driver is mounted in direct contact with the casting to promote low operating temperature and long life.
- Housing and door are protected with a thermoset TGIC-polyester powder coat finish. Powder coat finish available in bronze, white or custom colors (consult factory).
- Vandal shield, wire guard and visor accessories available for the large model, ordered separately.

### MOUNTING

- Mounting options can be integrated with an optional NEMA twist-lock receptacle. With complete independence from the luminaire housing, compatible photocells are always oriented precisely without being affected by the luminaire orientation.



# CitySaver™

## LED ROADWAY LIGHTING

**SMALL**

**MEDIUM**

### COMPLIANCE

- ANSI C136.2, .3, .10, .14, .15, .22, .25, .31, .37 and .41
- ANSI/IES RP-8-14 Roadway Lighting
- MSSLC Model Specification for LED Roadway Luminaires v2 (2014)

### APPROVALS

- ETL listed. Complies with UL1598 and CSA C22.2#250.0.0:2008
- Suitable for wet locations.
- 3G Vibration Rated for Bridge/Overpass Applications per ANSI C136.31-2010, Test Level 2.
- Select models DLC Qualified. For a complete list of DLC Qualified products: [www.xtralight.com/dlc](http://www.xtralight.com/dlc) or

### PRODUCT PERFORMANCE

MODEL	CCT	LUMENS	EFFICACY
CSR-S 36 & 52	4000K	OVER 6000	UP TO 122.4
CSR-M 75, 96, 125 & 150	4000K	OVER 17200	UP TO 118.9

### FEATURES

- Energy efficient family of LED luminaires for replacement of up to 400W HID.
- Familiar cobra head style, optimized for LED operation and performance.
- Tool-free access to mounting and electrical components.
- Controls ready luminaire is standard for independent operation or remote management.
- Multiple light distributions and lumen levels for diverse application requirements covering all roadway needs.
- Ease of installation, long service life and minimal maintenance.
- IP66 rated LED light engines prevent dust and moisture from degrading performance.

### CONSTRUCTION

- Housing is a one-piece die-cast aluminum with integral mounting for strength and durability.
- Door is removable without tools and rear-hinged for ease of installation and service.
- LED boards and drivers are mounted directly to the housing's integral heat sink for thermal management.
- No lens frame or secondary glass for maximum performance.
- All fasteners are stainless steel.
- Housing and door are protected with a thermoset TGIC-polyester powder coat finish using a tightly controlled multi-stage process. This finish provides superior protection from corrosion and maximum environmental durability.



# Wall Pack



**LWP SMALL**



**LWP MEDIUM**



**LWP LARGE**

## APPROVALS

- ETL listed. Complies with UL1598 and CSA 22.2
- Suitable for wet locations.
- Select models DLC Qualified. For a complete list of DLC Qualified products visit: [www.xtralight.com/dlc](http://www.xtralight.com/dlc) or [www.designlights.org/qpl](http://www.designlights.org/qpl)

## PRODUCT PERFORMANCE

MODEL	CCT	WATTS	LUMENS	EFFICACY
LWPS-2500L	3000K	19.4	2173	112.0
LWPS-2500L	3500K	19.4	2232	115.1
LWPS-2500L	4000K	19.5	2329	121.3
LWPS-2500L	5000K	19.3	2359	122.2
LWPM-5000L	3000K	43.2	5008	115.9
LWPM-5000L	5000K	42.8	5439	127.1
LWPL-6000L	5000K	53.9	6499	120.6
LWPL-7500L	5000K	62.7	7857	125.3
LWPL-9000L	5000K	78.7	9239	117.4

## FEATURES

- Energy-efficient LED replacement for HID.
- Decorative yet rugged construction protects internal components from outdoor conditions.
- Significantly improved lumen maintenance over HID.

## CONSTRUCTION

- Housing is heavy-duty, die-cast aluminum with bronze powder coat finish.
- Finish - RoHS compliant, low-VOC, TGIC polyester bronze powder coat.
- High impact, heat-resistant borosilicate glass lens is hinged, is removable and won't yellow or degrade.
- Silicone gasket is included to prevent leakage and provide weather-tight protection.

## OPTICS

- Uplight (>90°) is less than 7%, significantly reducing wasted light over other commercial models.
- High angle light (80-90°) is less than 6%.
- Lumen Maintenance: >100,000hrs L<sub>90</sub> @ 25°C.

## ELECTRICAL

- Optional 20kA surge protection available.



# Wall Pack



**FCW LARGE**

**FCW MEDIUM**



**LSW SMALL**

**LSW LARGE**

## APPROVALS

- ETL listed (FCW). Complies with UL1598 and CSA C22.2#250.0.0:2008
- Suitable for wet locations.
- Select models DLC Qualified. For a complete list of DLC Qualified products visit: [www.xtralight.com/dlc](http://www.xtralight.com/dlc) or [www.designlights.org/qpl](http://www.designlights.org/qpl)

## PRODUCT PERFORMANCE

MODEL	CCT	WATTS	LUMENS	EFFICACY
LSWS-2500L	5000K	24.5	2524	103.0
LSWS-3500L	5000K	32.2	3427	106.4
LSWL-5500L	5000K	64.3	5955	92.6
FSWM-4500L	5000K	48.0	4790	100.0
FSWL-7000L	5000K	68.1	7196	105.7

## FEATURES

- Zero uplight (U0) is night sky friendly, reduces wasted light. Energy-efficient replacement for up to 400W HID.
- Utilizes low-wattage, high-efficiency patented LED technology.
- Full cut off wall pack with forward and side throw optics for maximum light distribution.
- Decorative yet rugged construction protects internal components from outdoor conditions.
- Controls ready for network controls or building automation.

## CONSTRUCTION

- Housing is heavy-duty, die-cast aluminum.
- Finish - RoHS compliant, low VOC, TGIC polyester bronze powder coat.
- Silicone gasket is included to prevent leakage and provide weather-tight protection.
- Forward/side throw optics for maximum light distribution and clear tempered glass lens (FCW).

## ELECTRICAL

- Optional 20kA surge protection available.



# Canopy



**CCL SMALL**



**CCL MEDIUM**

## APPROVALS

- ETL listed. Complies with UL1598 and CSA C22.2#250.0.0:2008
- Suitable for wet locations.
- Select models DLC Qualified. For a complete list of DLC Qualified products visit: [www.xtralight.com/dlc](http://www.xtralight.com/dlc) or [www.designlights.org/qpl](http://www.designlights.org/qpl)

## PRODUCT PERFORMANCE

MODEL	CCT	WATTS	LUMENS	EFFICACY
CCLS-2500L	4000K	24.1	2282	94.7
CCLS-3000L	4000K	31.8	2874	90.3
CCLM-4500L	5000K	47.8	4408	92.2

## FEATURES

- Surface mount for building entrances, walkways, and other canopies.
- Energy-efficient replacement.
- Utilizes low-wattage, high-efficiency LED technology.
- High Color Rendering Index (CRI).
- Decorative yet rugged construction protects internal components from outdoor conditions.

## CONSTRUCTION

- Housing is heavy-duty, die-cast aluminum.
- Finish is RoHS compliant, low VOC. TGIC polyester bronze powder coat.
- Polycarbonate prismatic lens, injection molded, UV stabilized.
- Stainless steel screws secure lens door to housing.
- Optional 20kA surge protection available.

## MOUNTING

- Multiple 1/2" NPT access points for surface conduit or J-Box mounting.

# Canopy



ACL

## APPROVALS

- Complies with UL1598 and CSA C22.2#250.0.0:2008
- Suitable for wet locations.

## PRODUCT PERFORMANCE

MODEL	CCT	WATTS	LUMENS	EFFICACY
ACLS-5000L	4000K	48.0	5226	108.9
ACLS-5000L T5	4000K	48	4735	99.0
ACLL-10000L T5	4000K	85.9	10286	119.7

## FEATURES

- High performing architectural canopy LED luminaire offering uniform light distribution in a slim profile.
- Surface mount for building entrances, walkways or canopies.
- Field serviceable fixture utilizing LED technology.

## CONSTRUCTION

- Two-piece cast aluminum housing fully sealed with silicone gaskets.
- Acrylic lens reduces glare for luminaires installed in a driving lane.
- All hardware is corrosion resistant.
- Exposed surfaces are finished with a 5 stage powder coat process in gray finish.

## MOUNTING

- Surface mounted to a J-Box or pendant mounted.
- Multiple 1/2" NPT access points for surface conduit mounting.

## OPTICS

- Optional Type V garage optics available for a symmetric, square distribution of uniform light.

## ELECTRICAL

- Optional 20kA surge protection and programmable occupancy sensors are available factory installed.



# Flood



**LFL SMALL**



**LFL MEDIUM**



**LFL LARGE**

## APPROVALS

- ETL listed. Complies with UL1598 and CSA C22.2#250.0.0:2008
- Suitable for wet locations.
- Select models DLC Qualified. For a complete list of DLC Qualified products visit: [www.xtralight.com/dlc](http://www.xtralight.com/dlc) or [www.designlights.org/qpl](http://www.designlights.org/qpl)

## FEATURES

- Energy-efficient LED replacement for HID that easily blends in with existing architecture.
- Rugged die-cast construction easily protects internal components from outdoor conditions.
- Significantly improved lumen maintenance over HID.
- Optional 20kA surge protection available.

## PRODUCT PERFORMANCE

MODEL	CCT	WATTS	LUMENS	EFFICACY
LFLS-2500L	4000K	19.5	2753	141.2
LFLS-3500L	4000K	27.8	3714	133.6
LFLM-4500L	4000K	34.1	4951	145.2
LFLM-6500L	4000K	51.4	7039	136.9
LFLM-7500L	4000K	53.7	7553	140.6
LFLM-9000L	4000K	68.5	9691	141.6

## CONSTRUCTION

- Housing is heavy-duty, die-cast aluminum.
- Finish is RoHS compliant, low VOC. TGIC polyester bronze powder coat.
- Impact-resistant tempered glass lens sealed with a silicone gasket to prevent leakage and provide weather-tight protection.

# Parking Garage



**GLL MEDIUM**

## APPROVALS

- ETL listed. Complies with UL1598 and CSA C22.2#250.0.0:2008
- Suitable for wet locations.
- Select models DLC Qualified. For a complete list of DLC Qualified products visit: [www.xtralight.com/dlc](http://www.xtralight.com/dlc) or [www.designlights.org/qpl](http://www.designlights.org/qpl)

## PRODUCT PERFORMANCE

MODEL	CCT	WATTS	LUMENS	EFFICACY
GLLM-4500L	4000K	42.5	4623	108.8
GLLM-6500L	4000K	53.9	6461	119.9

## FEATURES

- Energy-efficient LED luminaire designed for parking garage applications with mounting heights 15 feet and below.
- Decorative yet rugged construction protects internal components from the outdoor conditions.
- Provides a smooth, even, IES Type V symmetrical light distribution.
- Low profile design, only 4.5 inches.

## CONSTRUCTION

- Housing is heavy-duty, die-cast aluminum.
- Finish is RoHS compliant, low VOC. TGIC polyester bronze powder coat.
- Polycarbonate prismatic lens, injection molded, UV stabilized.
- Optional 20kA surge protection, photocell button and programmable occupancy sensors available factory installed.

## MOUNTING

- Three (3) 1/2" NPT access points for surface conduit and one (1) 1/2" NPT hub for pendant or J-Box mounting.





## SPECIALTY APPLICATIONS

---



# Hazardous Location

**MISSION CRITICAL ILLUMINATION:**  
Our line of NEC, NFPA, and UL regulated  
proprietary Hazardous Location  
luminaires.

## FEATURES

- Complies with UL1598, UL 844.
- CSA C22.2#250.0.0:2008 & No 137.
- IP65 Driver and IP66 Optical enclosure.
- BAA Compliant.
- Select models DLC Qualified.
- CLASS 1, DIVISION 2, GROUP A/B/C/D.

## INCLUDED MODELS

- Round High Bay
- Viento Floods Large and Small
- Vapor Tights (VTE & VTH)



HAZARDOUS LOCATION



15



[www.XLM.com](http://www.XLM.com)





# Horticulture Lights

Full spectrum and split spectrum lights that maximize indoor growing potential.

### FEATURES

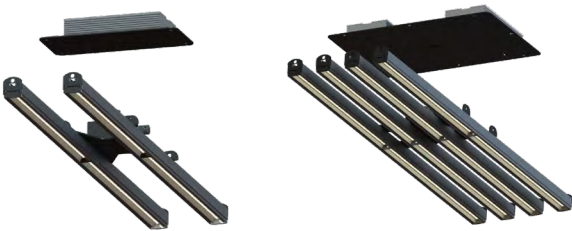
- Powerful LED horticultural luminaire with higher quality output and less energy compared to traditional HPS.
- Optimal Efficiency in the delivery of photons per watt when compared to other LED luminaires in the market.
- Modular design, high output, and uniformity of light allows for easier scaling from smaller setups to large scale grows.
- Lower cost of ownership, reduced energy consumption and little to no maintenance required compared to traditional HPS.

### CONSTRUCTION

- Extruded aluminium profile provides superior thermal management for the LEDs as well as a versatile structure for mounting. Anodized black for durability.

### KEY BENEFITS

- Higher PPE per kilowatt hour (up to 2.27  $\mu\text{mol}/\text{J}$ ).
- High output (up to 3100  $\mu\text{mol}/\text{s}$ ).
- Ideal spectral mix for all stages of plant growth.
- Excellent light uniformity to ensure higher yields.
- Significant energy reduction compared to HPS.



### APPROVALS

- Complies with UL1598 and CSA C22.2#250.0.0:2008
- Suitable for wet locations.

### PRODUCT PERFORMANCE

PPF MODEL	INPUT POWER	PHOTO-SYNTHETIC PHOTON FLUX (PPF)	PHOTON FLUX EFFICACY (PPE)
F01 1100	592 W	1137.93 $\mu\text{mol}/\text{s}$	1.92 $\mu\text{mol}/\text{J}$
F01 2400	1324 W	2420.09 $\mu\text{mol}/\text{s}$	1.83 $\mu\text{mol}/\text{J}$
S01 1100	405.19 W	1128.05 $\mu\text{mol}/\text{s}$	2.78 $\mu\text{mol}/\text{J}$
S01 1400	641.69 W	1412.51 $\mu\text{mol}/\text{s}$	2.20 $\mu\text{mol}/\text{J}$
S01 2300	1277 W	2295.59 $\mu\text{mol}/\text{s}$	1.80 $\mu\text{mol}/\text{J}$



# Wildlife Lighting

**Characteristics that include standards for both Sea Turtle Friendly and Wildlife Friendly. This collection of LED lighting is applicable for coastal regions and inland wildlife areas such as: parks, ponds, lakes, zoos, and preserves.**



## APPROVALS

- IP66 or IP67 Rated.
- FWC approval 2019.
- ETL, UL, and DLC compliant.
- 3G Vibration Rated for Bridge/Overpass Applications per ANSI C136.31-2010, Test Level 2. (Viento S,M,&L)

## FEATURES

- Best-In-Class amber/red LEDs.
- Weather Proof suitable for wet locations.
- 0-10 v Dimming.
- Zero uplight (U0) is night sky friendly, supports Wildlife Friendly standards.

## INCLUDED MODELS

- Viento Small, Medium, and Large
- Viento Wall Pack
- Garage Luminaire
- Vapor Tight





# Custom Outdoor LED Conversion Kits



## CONSIDER A CUSTOM LED CONVERSION KIT FOR YOUR NEXT PROJECT

### HOW DOES THE DESIGN PROCESS WORK?

- LED conversion kits are specifically engineered for the application to significantly reduce maintenance and energy costs compared to traditional legacy models.
- XtraLight needs information about the opportunity: price target, existing luminaire information, compliance requirements, etc.
- Send a sample luminaire to the factory (if available) to design and build the kit around. After the design process, photometric and thermal testing can be conducted in a NVLAP® accredited lab. A 10-year warranty may then be issued.
- The sample containing the new kit, any photometric testing/layouts, thermal testing, and a quote will then be returned for evaluation. Once approved, it will be available to order in the desired quantity.

### APPLICATIONS

- Decorative Architectural Acorn Light or Post-Top Light Retrofit (ARK)
- Round or Square Shoe Box Light Retrofit (SRK)
- Bollard Light Retrofit (BRK)

### APPROVALS

- Complies with UL 1598 and CSA C22.2#250.0.0:2008
- ETL/DLC Listings available upon request.

### FEATURES

- Conversion kits transform existing luminaires to highly efficient LED models without compromising the aesthetics of the original design. This solution is well suited for applications where the existing luminaire is in good condition, is architecturally appealing, or it's unavailable to re-purchase from the original manufacturer.
- Reliable, energy-efficient operation.
- Exceptional light quality with uniform illumination.
- Easy-to-install kit in the field (not a box of parts).

### CONSTRUCTION

- Replaceable, RoHS-compliant LED modules or COBs utilize the chassis of the luminaire for heat dissipation for enhanced LED life.





# INDOOR SOLUTIONS

---





# TUNABLE WHITE

## Tunable White

2700K

COLOR TEMPERATURE CONTROL

6500K

Change and adapt delivered light color easily with XtraLight's Tunable White LED. Control and customize the color temperature of lighting which could affect alertness and productivity at work and school. High-tech and innovative, including tunable white options in your lighting selection will decrease the number of SKUs you will need in your lighting design while increasing student and employee performance.

### FEATURES

- Best in class LEDs from 2700K to 6500K
- Available in 4000L and 8000L packages

**OSRAM**

Tunable  
White  
Included

### INCLUDED MODELS

- Architectural Recessed Troffer Tunable White (ART)
- Slim Architectural Strip Tunable White (SAS)
- Slim Profile Strip Tunable White (SPS)
- Architectural Conical Recessed Tunable White (ACR)
- High Output Strip Tunable White (LRS)
- Vesica Linear Suspended Tunable White (VES)
- Architectural Dual Recessed Tunable White (ADR)
- Recessed Troffer Tunable White (TRL)
- Low Profile Recessed Troffer Tunable White (LPR)
- Radial/Stairwell Wrap Tunable White (LRW)
- Recessed Architectural Linear Tunable White (RAL)

Suspended

Troffers

Strips

# Recessed

ACR

ADR

ART

## PRODUCT PERFORMANCE

MODEL	CCT	WATTS	LUMENS	EFFICACY
ACR14-4000L	4000K	32.8	4211	128.4
ACR14-5000L	4000K	43.5	4850	111.5
ACR14-6000L	4000K	53.1	5883	110.8
ACR14-8500L	4000K	70.3	8735	124.3
ACR22-2000L	4000K	16.8	1977	117.7
ACR22-3000L	4000K	26.8	2770	103.4
ACR22-3500L	4000K	33.7	3892	115.5
ACR22-4500L	4000K	41.3	4925	119.2
ACR24-3000L	4000K	24.9	3379	135.7
ACR24-4000L	4000K	31.6	4454	140.9
ACR24-8500L	4000K	69.7	9065	130.1
ADR24-3500L	4000K	32.0	3119	97.5
ADR24-6000L	4000K	67.0	5936	88.6
ADR24-14000L	4000K	142.1	14945	105.2
ART14-6500L	4000K	55.0	6472	117.7
ART22-4500L	4000K	42.6	4458	104.6
ART24-10000L	4000K	87.8	10157	115.7

## APPROVALS

- Select models ETL listed. Complies with UL1598 and CSA C22.2#250.0.0:2008.
- Suitable for damp locations.
- IC Rated (ACR).
- Select models DLC Qualified. For a complete list of DLC Qualified products visit: [www.xtralight.com/dlc](http://www.xtralight.com/dlc) or [www.designlights.org/qpl](http://www.designlights.org/qpl)

## FEATURES

- Stylish architectural recessed troffers that use LED technology to create soft and consistent illumination.
- Lenses are engineered to maximize lumen output and eliminate glare.
- Multiple lumen packages provide flexibility for a variety of lighting applications.
- Air return, surface mount and metric size options available for select models
- Recessed troffer flange kit available.
- Tunable White option available.

## CONSTRUCTION

- Housing is code gauge steel for durability and pre-painted white to eliminate glare.
- ART features an evenly illuminated, back-lit curved polycarbonate lens and choice of a “floating” curved, “floating” flat or round decorative lens treatment that adds a unique appearance.





## APPROVALS

- Select models ETL listed. Complies with UL1598 and CSA C22.2#250.0.0:2008.
- Suitable for damp locations.
- IC Rated (LPR).
- Select models DLC Qualified. For a complete list of DLC Qualified products visit: [www.xtralight.com/dlc](http://www.xtralight.com/dlc) or [www.designlights.org/qpl](http://www.designlights.org/qpl)

## PRODUCT PERFORMANCE

MODEL	CCT	WATTS	LUMENS	EFFICACY
LPR22-2000L	4000K	18.0	1953	109.0
LPR22-3000L	4000K	26.0	2782	107.0
LPR22-3500L	4000K	34.0	3764	110.7
LPR22-4500L	4000K	42.0	4575	109.0
LPR24-3000L	4000K	26.0	3219	124.0
LPR24-4000L	4000K	36.0	4134	114.8
LPR24-5000L	4000K	42.0	4906	117.0
TRL24-5000L	4000K	49.5	5226	105.6
TRL24-9500L	4000K	105.3	9502	90.2
RAL - 2000L	4000K	34.4	23228	67.7

## LPR/TRL FEATURES

- Classic recessed troffers that use premium LED technology to create soft, comfortable, and consistent illumination.
- Proprietary lenses are engineered to maximize lumen output and eliminate glare.
- Multiple lumen packages provide flexibility for a variety of lighting applications.
- Air return, surface mount and metric size options available for select models.
- Recessed troffer flange kit available.
- Tunable White option available.

## RAL FEATURES

- An energy-efficient LED replacement for recessed linear fluorescent luminaires.
- Wide range of lengths and widths to fit any design requirements.
- Ideal for new construction or retrofit applications.
- Optional emergency battery available in 4 ft. and up.
- Tunable White option is available.

## CONSTRUCTION

- LPR/TRL housings are code gauge steel for durability and pre-painted white to eliminate glare. RAL housing is post-painted white. Custom colors are available, consult factory.
- Suitable for standard G-Grids. For compatibility for other grid types, consult factory.
- Optional tamper proof screws available.



## APPROVALS

- ETL listed. Complies with UL1598 and CSA C22.2#250.0.0:2008
- Suitable for damp locations.

## PRODUCT PERFORMANCE

MODEL	LIGHT DISTRIBUTION UP/DOWN	CCT	WATTS	LUMENS	EFFICACY
VES4-5000L	50%/50%	4000K	40.0	5193	129.8
VES4-7000L	50%/50%	4000K	56.0	7059	126.1
VES4-10000L	50%/50%	3000K	88.0	9775	111.1
VES4-10000L	0%/100%	3000K	87.5	8792	100.5
VES4-10000L	70%/30%	3000K	87.0	8244	94.8
VES4-10000L	20%/80%	3000K	88.0	8375	95.2
VES4-10000L	50%/50%	4000K	86.0	10106	117.5

## FEATURES

- An indirect/direct LED linear suspended luminaire that offers exceptional visual comfort with unique lens aesthetics and a sleek curved profile.
- Multiple choices of light distribution to meet different application needs.
- Available for continuous row or individual placement with light output up to 2,500 lumens/ft.
- “Controls ready” to work with virtually any network controls or building automation.
- Tunable White option is available.

## CONSTRUCTION

- Available in 4 ft. or 8 ft. models. Consult factory if continuous rows are required.
- Extruded aluminum and steel post-painted textured matte white, matte black, silver or custom color (consult factory).
- Die-cast end caps mechanically spring loaded to body for ease of accessibility in the field.
- High-efficiency frosted acrylic lens.

## MOUNTING

- Suspended with field-adjustable Griplock® cable canopy or pendant mount options. Mounting accessories, must be chosen with the luminaire (shipped separately).



# Surface/Suspended

**SAS ROUND**

**SAS SQUARE**

## APPROVALS

- ETL listed. Complies with UL1598 and CSA C22.2#250.0.0:2008
- Suitable for damp locations.
- Select models DLC Qualified. For a complete list of DLC Qualified products visit: [www.xtralight.com/dlc](http://www.xtralight.com/dlc) or [www.designlights.org/qpl](http://www.designlights.org/qpl)

## PRODUCT PERFORMANCE

MODEL	LENS	CCT	WATTS	LUMENS	EFFICACY
SAS2-1500L	ROUND	4000K	12.6	1647	130.6
SAS2-2500L	ROUND	4000K	21.3	2480	116.4
SAS4-3000L	ROUND	4000K	22.9	3099	135.3
SAS4-5000L	ROUND	4000K	39	4482	128
SAS4-7000L	ROUND	3500K	60.8	6625	109.0

## FEATURES

- An energy-efficient architectural LED luminaire for continuous row or individual placement with efficiency of up to 135 lm/w.
- Offers a sleek, small profile body (2.6" high) with no visible hardware or mounting holes.
- Controls Ready: Capable of working with virtually any network controls or building automation.
- Tunable White option is available.

## CONSTRUCTION

- Available in 2 ft., 4 ft., or 8 ft. models. Continuous rows also available, consult factory.
- Housing is 22 gauge steel post-painted matte white, matte black or silver. Custom colors available, consult factory.
- Choice of round or square frosted acrylic lens.
- Symmetric diffuser is available with the round and square lens, providing even smooth lighting.
- Optional patterned diffusers are available.

## MOUNTING

- Surface (ceiling or wall) and adjustable cable mount ready.
- Optional pendant and cable mount accessories available.

# Surface/Suspended



**SPS ROUND**



**SPS SQUARE**

## APPROVALS

- ETL listed. Complies with UL1598 and CSA C22.2#250.0.0:2008
- Suitable for damp locations.
- Select models DLC Qualified. For a complete list of DLC Qualified products visit: [www.xtralight.com/dlc](http://www.xtralight.com/dlc) or [www.designlights.org/qpl](http://www.designlights.org/qpl)

## PRODUCT PERFORMANCE

MODEL	LENS	CCT	WATTS	LUMENS	EFFICACY
SPS2-1500L	ROUND	4000K	12.6	1647	130.6
SPS2-2500L	ROUND	4000K	21.3	2480	116.4
SPS2-3500L	NONE	4000K	31.9	3649	114.4
SPS4-3000L	ROUND	4000K	22.9	3099	135.3
SPS4-7000L	ROUND	3000K	59.7	6475	108.5
SPS4-7000L	ROUND	3500K	60.8	6625	109.0
SPS4-7000L	ROUND	4000K	59.7	6764	113.2
SPS4-7000L	NONE	4000K	61.9	7459	120.5

## FEATURES

- An energy-efficient LED luminaire for continuous row or individual placement with efficiency of up to 135 lm/w.
- Small profile body (2.6" high) with no visible hardware or mounting holes.
- Offers high performance LED lighting in a cost-efficient strip.
- Controls Ready: Capable of working with virtually any network controls or building automation.
- Tunable White option is available.

## CONSTRUCTION

- Available in 2 ft., 4 ft., or 8 ft. models. Continuous rows also available, consult factory.
- Housing is 22 gauge steel pre-painted gloss white.
- Metal parts are laser cut providing smooth edges for ease of installation in the field.
- Optional round or square frosted acrylic lenses available.
- Wire guard accessory sold separately.

## MOUNTING

- Surface (ceiling or wall) and adjustable cable mount ready. Optional quick mount bracket or Griplock® cable canopy accessory available.



# Surface/Suspended/Stairwell

LRS

LRW

WAI

## APPROVALS

- Select models ETL listed. Complies with UL1598 and CSA C22.2#250.0.0:2008
- Select models suitable for damp locations.
- Select models DLC Qualified. For a complete list of DLC Qualified products visit: [www.xtralight.com/dlc](http://www.xtralight.com/dlc) or [www.designlights.org/qpl](http://www.designlights.org/qpl)

## PRODUCT PERFORMANCE

MODEL	CCT	WATTS	LUMENS	EFFICACY
LRS4-3000L	4000K	25.2	3216	127.6
LRS4-5000L	4000K	42.2	5000	118.5
LRS4-8500L	5000K	72.3	8846	122.4
LRW 025	4000K	25.2	3283	130.3
LRW 042	4000K	42.6	5119	120.2
WAI4-4000L	4000K	42.9	4857	113.2

## LRS/LRW FEATURES

- Low profile, energy-efficient luminaires that utilize premium LED technology.
- High output illumination that's ideal for stairwells, corridors, industrial, and commercial spaces.
- Die-cast end caps painted to match housing.
- Multiple lumen packages provide flexibility for a variety of lighting applications.
- Multi-step dimming, ultrasonic occupancy sensor option available for the LRW. Allows user selectable standby options and time delay adjustments.
- Controls ready.
- Tunable White option is available.

## WAI FEATURES

- Energy-efficient angle wrap LED luminaire that provides asymmetrical illumination for stairwells, corridors, and other alcoves.
- Multi-step dimming, ultrasonic occupancy sensor option available. Allows user selectable standby options and time delay adjustments.

## CONSTRUCTION

- 2, 4, and 8 foot models
- LRW/LRS housing is code gauge steel and WAI housing is code gauge aluminum. Both engineered for durability and pre-painted white to eliminate glare. Custom colors are available, consult factory.
- Proprietary lenses are engineered to maximize lumen output and eliminate glare.

# Cove / Channel

LCL

SCL

## APPROVALS

- ETL listed. Complies with UL1598 and CSA C22.2#250.0.0:2008
- Suitable for damp locations.
- Select models DLC Qualified. For a complete list of DLC Qualified products visit: [www.xtralight.com/dlc](http://www.xtralight.com/dlc) or [www.designlights.org/qpl](http://www.designlights.org/qpl)

## PRODUCT PERFORMANCE

MODEL	REPLACES	CCT	WATTS	LUMENS	EFFICACY
LCL 025	1L T8	4000K	24.5	3671	149.8
LCL 042	2L T8	4000K	43.2	5905	136.7
SCL4-4000L	2L/3L T5HO/T8	4000K	33.3	3987	119.7

## FEATURES

- Energy-efficient LED replacement for traditional fluorescent cove or indirect lighting applications.
- Ideal for emphasizing display areas, products, certain architectural details or surfaces.
- Low profile (3.5" or less) to fit shallow coves.
- Dimming and occupancy sensor options available, factory installed.
- Quick mount bracket option available.

## CONSTRUCTION

- Available in 2 ft., 4 ft., or 8 ft. models. Consult factory if continuous rows are required.
- Housing is code gauge steel for durability and pre-painted white.
- Multiple lens choices available for the SCL.
- Cord and plug option available.



# Indoor Retrofit



**LRK**



**RTD**

## APPROVALS

- Select models ETL listed. Complies with UL1598 and CSA C22.2#250.0.0:2008
- Suitable for damp locations.
- Select models DLC Qualified. For a complete list of DLC Qualified products visit: [www.xtralight.com/dlc](http://www.xtralight.com/dlc) or [www.designlights.org/qpl](http://www.designlights.org/qpl)

## PRODUCT PERFORMANCE

MODEL	REPLACES	CCT	WATTS	LUMENS	EFFICACY
RTD14-3000L	2L T12	4000K	22.5	3110	138.2
RTD22-3000L	2L T12	4000K	22.5	3038	135.0
RTD24-3000L	3L T8 4L T12	3500K	21.9	3140	143.4
RTD24-3000L	3L T8 4L T12	4000K	22.2	3187	143.6
RTD24-3000L	3L T8 4L T12	5000K	22.5	3210	142.7
RTD24-4500L	3L T8 4L T12	4000K	37.4	4415	118.0
LRK 036	2L T8	4000K	32.0	4310	134.7
LRK 052	2L T8	4000K	49.0	6130	125.1

## RTD FEATURES

- Easily converts most existing 1x4, 2x2, and 2x4 fluorescent troffers to LED technology by utilizing the existing fixture housing.
- High-efficiency LED technology ensures steady performance, long lifetime, and will reduce energy costs.
- Symmetrical reflectors.

## RTD CONSTRUCTION

- Proprietary lens engineered to maximize lumen output and minimize glare.
- Comes completely assembled as a lensed kit to efficiently perform the change out quickly, requiring only minutes to install without disturbing the ceiling.

## LRK FEATURES

- Converts 2/4 lamp, T8 fluorescent strips to LED.
- Streamlined packaging for easy job site management and lower labor costs.

## LRK CONSTRUCTION

- Housing is code gauge steel for durability and pre-painted white.
- Proprietary ribbed lens is engineered to maximize lumen output and minimize glare.
- Utilizes highly-efficient, proprietary LED technology.





**B203010**

**DEMAG** 10 TON  
SERIAL #07347

B203009

# INDUSTRIAL SOLUTIONS

---



# Slim High Bay

**9000-13000L  
WITH LENS**

**9000-13000L  
WITHOUT LENS**

## APPROVALS

- ETL Listed. Complies with UL1598 and CSA C22.2#250.0.0:2008.
- Suitable for damp locations.
- Select models DLC Qualified. For a complete list of DLC Qualified products visit: [www.xtralight.com/dlc](http://www.xtralight.com/dlc) or [www.designlights.org/qpl](http://www.designlights.org/qpl)

## PRODUCT PERFORMANCE

MODEL	CCT	WATTS	LUMENS	EFFICACY
SHB-9000L	4000K	68.2	10245	150.3
SHB-13000L	4000K	95.2	13389	140.7
SHB-19500L	4000K	144.6	20045	138.6
SHB-24000L	4000K	164.2	24969	152.0
SHB-27000L	4000K	196.8	27457	139.5
SHB-32000L	4000K	240.8	35151	146.0
SHB-39000L	4000K	291.9	42667	146.2
SHB-44000L	4000K	342.4	48040	140.3
SHB-52500L	4000K	396.6	55796	140.7

Note: Photometric Data Shown Without Optics.

## FEATURES

- Energy-efficient LED high bay luminaire designed to outperform any lighting requirements for commercial or industrial applications.
- LED provides a significant energy savings over fluorescent and HID, and provides a substantial savings on your electric bill.
- Aisle (AOS), open area (OOS) and programmable (FSP) sensor options available, factory installed.

## CONSTRUCTION

- Housing is .040" thick aluminum pre-painted white standard. (Black aluminum option available). Lightweight low profile body (1.33"-1.57") allows excellent thermal management for rapid heat dissipation.
- Cord/plug & wire guard options available.

## MOUNTING

- Adjustable cable mount ready, sold separately.
- Pendant mount option available.

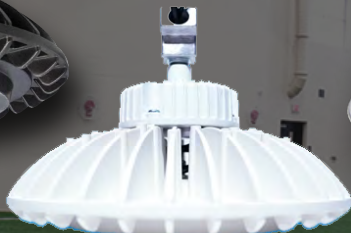
## OPTICS

- Available specialized optics are designed to produce a tailored light distribution for optimal visibility in specific applications.
- Smooth clear polycarbonate or smooth frosted acrylic lenses available.

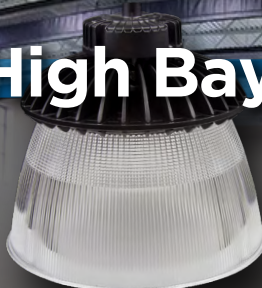
# Round High Bay



**RHB WITH FLAT GLASS LENS**



**WHITE RHB**



**RHB WITH CLEAR REFRACTOR**



**RHB WITH WIDE-BAY LENS**

## APPROVALS

- ETL Listed to UL1598 and CSA C22.2#250.0.0:2008.
- IP65 Driver and IP66 Optical enclosure.
- Select models DLC Qualified. For a complete list of DLC Qualified products visit: [www.xtralight.com/dlc](http://www.xtralight.com/dlc) or [www.designlights.org/qpl](http://www.designlights.org/qpl).

## PRODUCT PERFORMANCE

MODEL	CCT	WATTS	LUMENS	EFFICACY
RHB-12000L	5000K	84.6	12176	143.9
RHB-18000L	5000K	130.1	18609	143.0
RHB-24000L	5000K	194.6	25721	132.1
RHB-30000L	5000K	234.3	29441	125.7

## FEATURES

- Uniform light distribution for industrial, retail and other commercial applications.
- LED uses significantly less energy than HID, providing a substantial savings on your electric bill.
- Mounting height ranges from 12 - 40 feet depending on lumen package and accessories.
- PIR, motion (OOS) and photo/motion (FSP) sensor options available, factory installed.

## CONSTRUCTION

- Housing is die-cast aluminum which provides excellent thermal management for rapid heat dissipation.
- Electrostatically applied black powder coat finish standard. White finish option available.
- Clear tempered glass flat lens.

## MOUNTING

- Easily mount to existing pendant with 1/2" NPT threads. Other mounting options include hook, trunnion, loop, adjustable cable, 3/4" NPT pendant adapter and quick hang adaptor for existing eye bolts.

## ACCESSORIES

- Prismatic Frosted Refractor (Acrylic)
- Prismatic Clear Ribbed Refractor (Acrylic)
- Satin Aluminum Reflector (Anodized)
- Flat Clear or Conical Clear Ribbed Bottom Lens
- Wide-bay Clear Acrylic or Clear Polycarbonate Lens
- Wire Guard and Junction Box



# High Bay



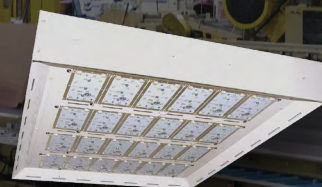
LHB03-100



LHB09-300



LHB06-200



LHB24-600

## APPROVALS

- ETL Listed. Complies with UL1598 and CSA C22.2#250.0.0:2008
- Suitable for damp locations.
- Select models DLC Qualified. For a complete list of DLC Qualified product visit: [www.xtralight.com/dlc](http://www.xtralight.com/dlc)

## PRODUCT PERFORMANCE

MODEL	CCT	WATTS	LUMENS	EFFICACY
LHB03-100	5000K	95.7	11987	125.3
LHB04-140	5000K	140.2	17001	121.3
LHB06-140	5000K	138.0	18236	132.1
LHB06-200	5000K	192.9	23631	122.5
LHB08-267	5000K	255.3	31247	122.4
LHB09-300	5000K	283.7	35051	123.5
LHB15-375	5000K	350.3	46705	133.3
LHB20-500	5000K	477.1	62698	131.4
LHB24-600	5000K	566.2	74732	132.0

## FEATURES

- Energy-efficient LED replacement for up to two 1000W HID or fluorescent high bays.
- Dimming and occupancy sensor options available.
- Flow-through thermal management.
- Controls-ready for network controls or building automation.
- Optional frosted prismatic or clear lens.

## CONSTRUCTION

- Housing is .080" thick aluminum pre-painted white standard, custom colors available.
- End caps mechanically fastened to body for strength and rigidity.
- Utilizes advanced thermal management technology for rapid heat dissipation.

## MOUNTING

- Adjustable cable mount ready, sold separately.
- V-Hanger ready, sold separately.
- Pendant mount option available. Larger models may require additional cable support.

# High Bay



**LEB 19000L/22500L**



**LEB 35000L/44500L**

## APPROVALS

- ETL Listed. Complies with UL1598 and CSA C22.2#250.0.0:2008
- Suitable for damp locations.
- Select models DLC Qualified. For a complete list of DLC Qualified product visit: [www.xtralight.com/dlc](http://www.xtralight.com/dlc)

## PRODUCT PERFORMANCE

MODEL	CCT	WATTS	LUMENS	EFFICACY
LEB2-19000L	5000K	158.8	20072	126.3
LEB2-22500L	5000K	212.7	22205	104.4
LEB4-35000L	5000K	318.5	39367	123.6
LEB4-44000L	5000K	428.7	44794	104.5

## FEATURES

- Energy-efficient LED replacement for up to 1000W HID or fluorescent high bays.
- Extremely low profile model available, 2.25" deep.
- Occupancy sensor option available.
- Emergency back-up option available.

## CONSTRUCTION

- Housing is .080" thick pre-painted white aluminum.
- Utilizes advanced thermal management technology for rapid heat dissipation.

## MOUNTING

- Adjustable cable mount ready, sold separately.
- Pendant mount option available.



# Recessed High Bay



LHR



LHF

## APPROVALS

- Complies with UL1598 and CSA C22.2#250.0.0:2008
- Suitable for damp locations.
- Select models DLC Qualified. For a complete list of DLC Qualified product visit: [www.xtralight.com/dlc](http://www.xtralight.com/dlc) or [www.designlights.org/qpl](http://www.designlights.org/qpl)

## PRODUCT PERFORMANCE

MODEL	CCT	WATTS	LUMENS	EFFICACY
LHF22-19500L	5000K	192.4	21773	113.2
LHR22-19500L				

Note: Photometric data shown for LHF/LHR is identical

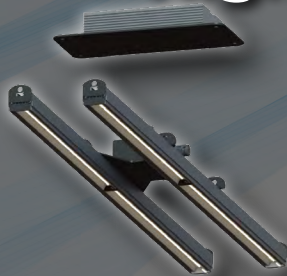
## FEATURES

- Energy-efficient LED recessed high bay replacement for up to a 400W HID.
- Designed to light large areas in commercial and industrial applications.
- Designed for lay-in grid or hard ceiling applications.
- Dimming options available.

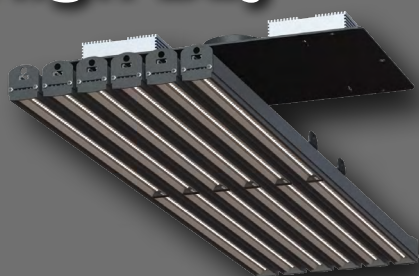
## CONSTRUCTION

- LHR Housing is .080" thick aluminum post-painted powder coat white. Custom colors available, please consult factory.
- LHF Housing is .080" thick aluminum pre-painted white aluminium.
- Choice of acrylic or polycarbonate lens.
- LHF - flat frameless lens; LHR - framed lens
- Access to driver from room side or plenum.
- Utilizes advanced thermal management technology for rapid heat dissipation.
- Designed for common 15/16" ceiling grid or hard ceiling flange kit.
- Earthquake clips standard.

# High Power High Bay



**LHR**



**LHF**

## APPROVALS

- Complies with UL1598 and CSA C22.2#250.0.0:2008

## PRODUCT PERFORMANCE

MODEL	CCT	WATTS	LUMENS	EFFICACY
220000L	4000K	1366	220,000	162
171000L	4000K	1067	171,000	160
115000L	4000K	766	115,000	167
105000L	4000K	700	105,000	151
85000L	4000K	545	85,000	158
60000L	4000K	358	60,000	170
30000L	4000K	377	30,000	167

## FEATURES

- LED high bay luminaire designed to deliver the highest lumen package on the market for a wide range of commercial or industrial applications.
- Engineered for high efficiency, extreme mounting heights, and performance in the most challenging high-bay applications.
- Rugged construction ensures maximum protection for internal components against the most demanding environments.
- Scalable to achieve any footcandle requirements.

## CONSTRUCTION

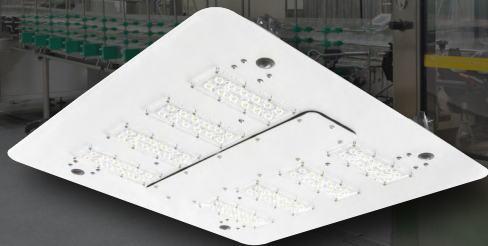
- Extruded aluminum profile provides superior thermal management for the LEDs, as well as a versatile structure for mounting. Anodized black for durability.
- Engineered to maximize lumen output . Glass lens is also available.
- Drivers are remotely mounted as standard for 60,000L - 220,000L. Driver mounted to luminaire for 30,000L model.

## MOUNTING

- Driver/luminaire can be mounted by adjustable



# Wash Down



**WDL - HARD CEILING**



**WDL - WALK-ON CEILING**

## APPROVALS

- NSF Listed for Splash Zone and Non-Food Zone
- Complies with UL 1598 and CSA C22.2#250.0.0:2008
- Suitable for wet locations.
- IP69K rated.

## PRODUCT PERFORMANCE

MODEL	OPTIC	CCT	WATTS	LUMENS	EFFICACY
WDL22-27000L	90°	5000K	211.3	27292	129.2

## FEATURES

- Revolutionary wash down LED luminaire that can exceed the harsh demands of food-processing environments and related areas.
- Unique design allows room side or ceiling side access to internal components, based upon mounting selection.
- Sealed optics available to compliment any application with superior uniformity and maximize spacing.

## CONSTRUCTION

- Housing is .080 aluminum, post-painted powder coat white for superior protection from corrosion and maximum environmental durability. Custom colors available upon request.
- Utilizes advanced thermal management technology for rapid heat dissipation.
- Driver access from plenum for walk-on ceiling applications or room side access for hard ceilings.

# Vapor Tight Enclosure



## APPROVALS

- Complies with UL1598 and CSA C22.2#250.0.0:2008
- Suitable for wet locations.
- Select models DLC Qualified. For a complete list of DLC Qualified product visit: [www.xtralight.com/dlc](http://www.xtralight.com/dlc) or [www.designlights.org/qpl](http://www.designlights.org/qpl)

## PRODUCT PERFORMANCE

MODEL	LENS	CCT	WATTS	LUMENS	EFFICACY
VTC4-5000L	N/A	4000K	38.9	4605	118.4
VTE4-3500L	SFA	4000K	25.6	3371	131.7
VTE4-4000L	SFA	4000K	34.7	4319	124.5
VTE4-5000L	SFA	4000K	44.4	5268	118.6
VTE4-6000L	SFA	4000K	54.4	6002	110.3
VTH2-12000L	SCA	4000K	99.4	12704	127.8
VTH4-25000L	SCA	3500K	200.8	23638	117.7
VTH4-30000L	SCA	4000K	244.2	30413	124.5
VTS4-3500L	SCA	4000K	26.0	3420	131.5
VTS4-4500L	SCA	4000K	34.9	4458	127.7

## FEATURES

- Energy-efficient vapor tight LED luminaires designed for use in warehouses, freezers, and food processing areas. Ideal for areas requiring luminaires with a wash down rating.
- Suitable for ambient operation down to -40°C (-40°F).
- IP66/67 rated enclosures.

## CONSTRUCTION

- VTE/VTH - High impact polyester, fire retardant fiberglass housing. VTS - Slim housing.
- VTE/VTH/VTS - Impact resistant diffuser secured to housing with clear cam latches. Stainless steel latches available.
- VTC - Uniquely shaped, F1 rated acrylic co-extruded housing and lens all in one piece.
- VTC - Gasketed end caps have knockouts available for easy wiring access. UL approved and evaluated for easy daisy chaining.
- Weather-resistant and corrosion-free construction from NSF listed components.

## MOUNTING

- Surface mount, adjustable cable, and V-Hanger ready. Accessories sold separately.
- Pendant mount option available.
- 45° bracket mount available.





# Emergency/Exit



## APPROVALS

- UL Listed for damp locations.
- Meets NFPA 101 Life Safety Code, NEC, OSHA, Local and State Codes.
- Certified to CEC under Title 20 regulations.
- Select models New York City compliant.

## INCLUDED MODELS:

- LED Red or Green Exit Signs - Multiple Styles
- LED Emergency Lights - Multiple Styles
- LED Exit Sign/Emergency Combos - Multiple Styles
- LED Emergency Units - Multiple Styles
- Additional products available (consult factory).

## FEATURES

- Long-lasting, energy-efficient ultra-bright LED.
- Decorative, low profile designs.
- Universal mounting and knockouts provided for conduit feed applications (select models).
- Unique design allows double-face conversion in the field (select models).

## ELECTRICAL

- Charge rate/power “ON” LED indicator and push-to-test switch for mandated code compliance testing.
- Internal solid-state transfer switch automatically connects the internal battery to LED board for minimum 90-minute emergency illumination.
- Fully automatic solid-state, two rate charger initiates battery charging to recharge a discharged battery in 24 hours (select models).

## CONSTRUCTION

- Injection-molded, engineering-grade 5VA flame-retardant, high-impact resistant thermoplastic . Premium-grade, aluminum housings. Select models also available in black or white powder-coated finishes.





